

# CERTIFICATE OF LOCATION OF GOVERNMENT CORNER

County of Anoka

State of Minnesota

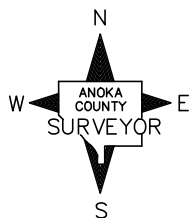
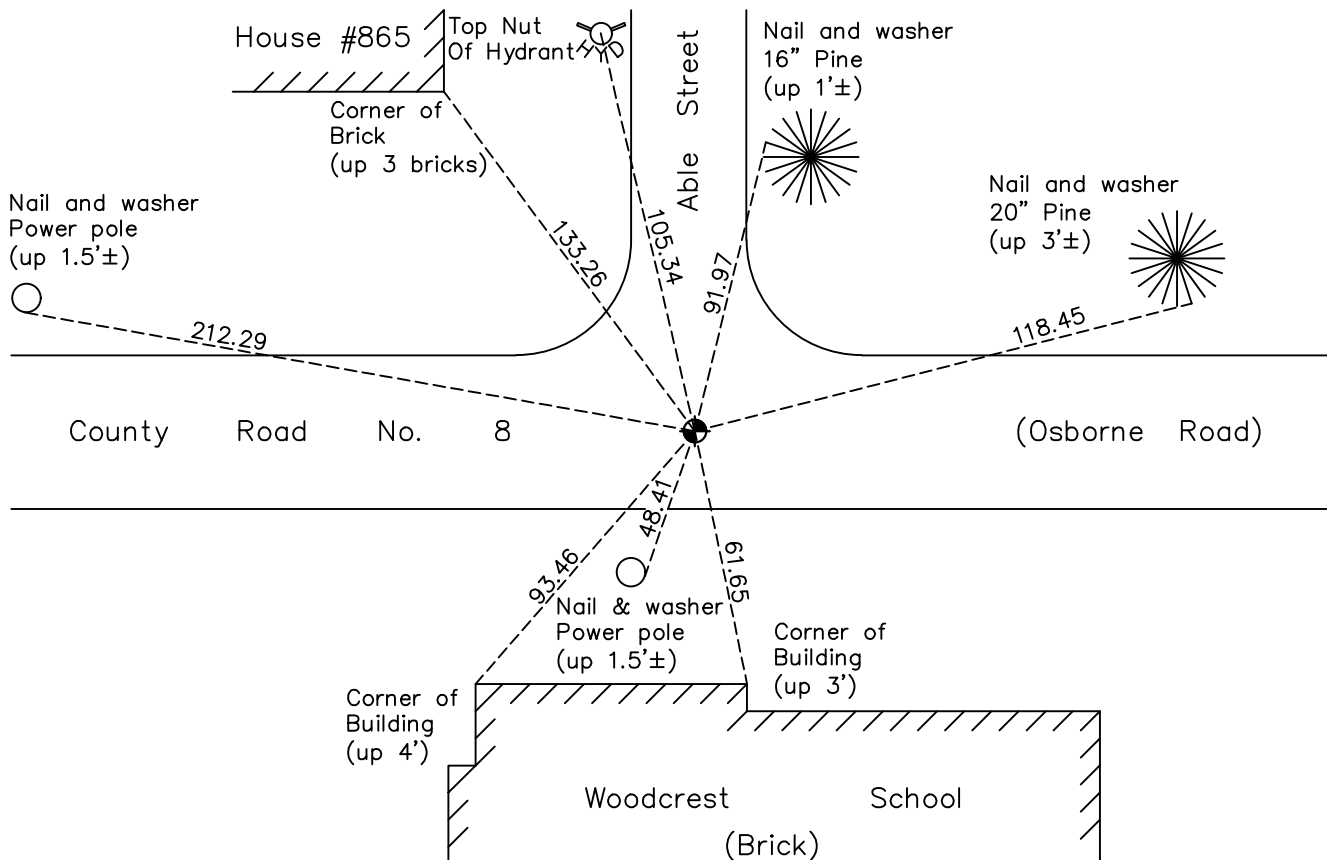
## Southeast Corner of Sec. 2 Township 30 Range 24

On the 22nd day of November, 1965, the described corner was evidenced by a concrete monument

and to perpetuate the location of said corner, at the exact location thereof, a permanent marker was placed consisting of a cast iron monument Note: concrete monument found down 2' under CIM

AND on the 11th day of August, 2022, said permanent marker was found flush and the ties were updated.

Updated reference ties are as shown below.



Revision Date  
 12/21/22

N.A.D. 1983 Coordinates  
 (1996 Adjustment)

County Project Coordinates	
Northing	126455.3347
Easting	504712.6403
Date	8/13/03

I hereby certify that this United States public land survey monument record is correct and complete to the best of my knowledge and belief.  
*David Zieglmeier* Date 12/11/23  
 David Zieglmeier Anoka County Surveyor  
 Minnesota License Number 46179

# HISTORY OF GOVERNMENT CORNER

Page No. 19

County of Anoka

State of Minnesota

## Southeast Corner of Sec. 2 Township 30 Range 24

### **CORNER HISTORY:**

July 22, 1943 - Harvey Cartwright found a 1" x 16" iron over a 1-1/4" x 24" iron down 4" and replaced with a concrete monument. Updated ties.

January 31, 1957 - Found concrete monument and updated ties by Charles O. Georgi.

February 10, 1960 - Found concrete monument down 0.4' and updated ties.

September 24, 1962 - Found concrete monument and updated ties by N.C. Hoium.

November 22, 1965 - Found concrete monument down 0.4' and updated ties.

July 5, 1966 - Found concrete monument and updated ties.

September 15, 1966 - Found concrete monument and replaced with a cast iron monument. Updated ties.

August 18, 1970 - Found cast iron monument flush and updated ties.

June 24, 1974 - Found cast iron monument and updated ties.

July 28, 1977 - Found cast iron monument and updated ties.

July 17, 1980 - Found cast iron monument and updated ties.

July 28, 1983 - Found cast iron monument and updated ties.

July 2, 1986 - Found cast iron monument and updated ties.

July 24, 1989 - Found cast iron monument and updated ties.

July 26, 1994 - Found cast iron monument and updated ties.

February 18, 1999 - Found cast iron monument and updated ties.

August 13, 2003 - Established NAD 1983 (1996 adj.) Anoka County project coordinates by static GPS methods.

June 13, 2005 - Found cast iron monument and updated ties prior to road overlay. Removed top of monument.

August 28, 2008 - Found cast iron monument and updated ties.

November 13, 2014 - Found cast iron monument. Verified position by VRS GPS methods. Updated ties.

November 26, 2019 - Found cast iron monument. Verified position by VRS GPS methods. Updated ties.

October 7, 2020 - Updated construction ties and removed CIM for construction

December 3, 2020 - Reset with short cast iron monument, set flush to surface, after road construction using static GPS methods. Verified position with VRS GPS methods and updated ties.

August 11, 2022 - Found cast iron monument. Verified position by VRS GPS methods. Updated ties.