

# CERTIFICATE OF LOCATION OF GOVERNMENT CORNER

County of Anoka

State of Minnesota

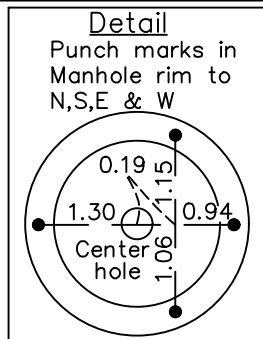
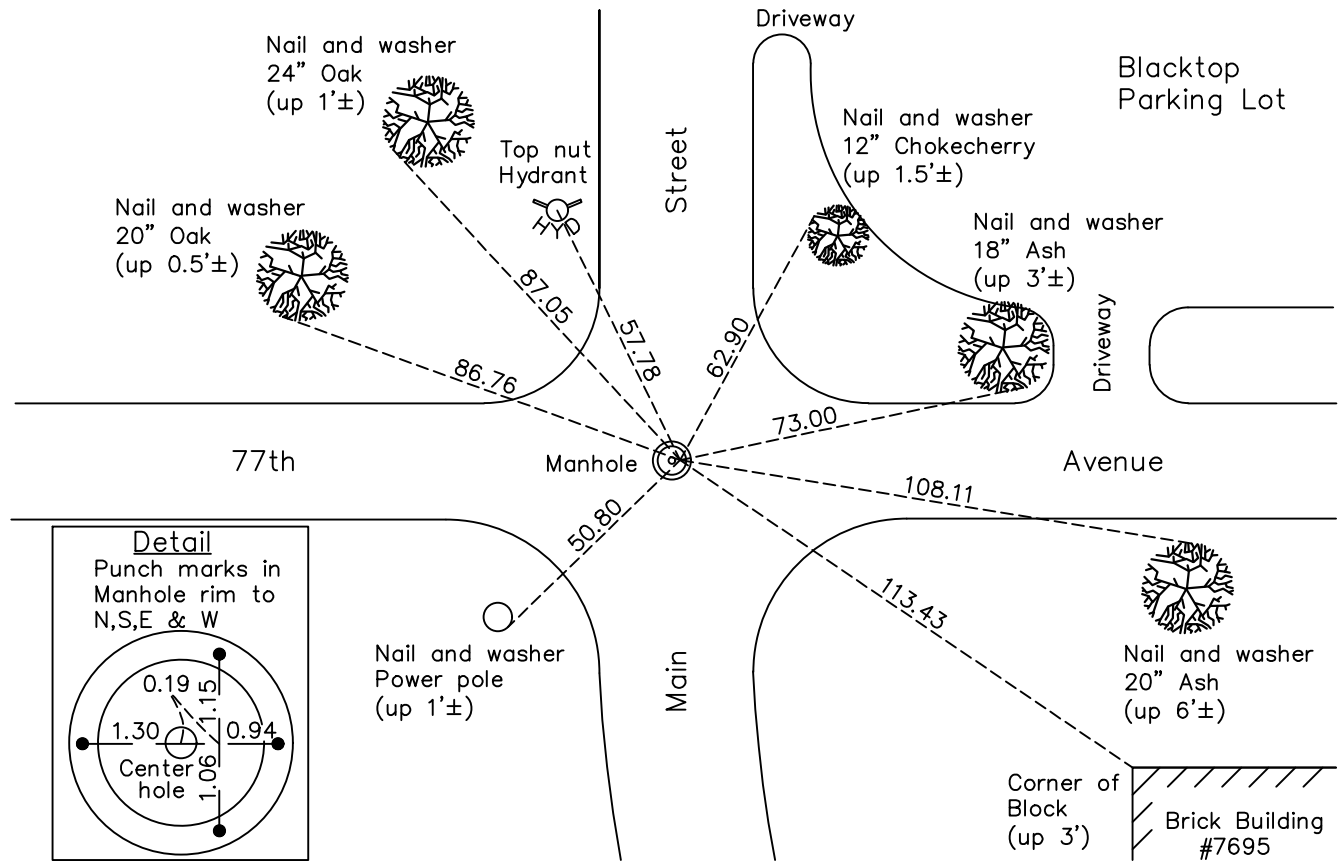
## Northeast Corner of Sec. 10 Township 30 Range 24

On the 21st day of March, 1974, the described corner was evidenced by ties from Comstock and Davis

and to perpetuate the location of said corner, at the exact location thereof, a permanent marker was placed consisting of a position on a manhole marked by the intersection of PK nails set 2' to the North, South, East and West.

AND on the 11th day of August, 2022, said permanent marker was found position with P.K. nails 2' to the North, South, East and West The ties were updated.

Updated reference ties are as shown below.



Revision Date  
12/21/22

N.A.D. 1983 Coordinates  
(1996 Adjustment)

County Project Coordinates	
Northing	<u>126467.8722</u>
Easting	<u>499445.3219</u>
Date	<u>8/19/03</u>

I hereby certify that this United States public land survey monument record is correct and complete to the best of my knowledge and belief.

*David Zieglmeier* Date 12/11/23

David Zieglmeier Anoka County Surveyor  
Minnesota License Number 46179

# HISTORY OF GOVERNMENT CORNER

Page No. 21

County of Anoka

State of Minnesota

## Northeast Corner of Sec. 10 Township 30 Range 24

### **CORNER HISTORY:**

July 22, 1943 - Harvey Carwright found a wood hub down 14" and replaced with a concrete monument down 14". Updated ties.

December 1956 - Minder Engineering found a concrete monument down 2' and updated ties.

February 3, 1958 - Found concrete monument and updated ties by Charles O. Georgi.

February 9, 1960 - Found concrete monument down 1.8' and updated ties.

May 14, 1964 - Found concrete monument and updated ties.

October 22, 1964 - Found concrete monument and set construction ties prior to sewer construction.

November 17, 1965 - Removed concrete monument and set cast iron monument down 0.5' after sewer construction. Updated ties.

July 6, 1966 - All corner ties are gone.

March 21, 1974 - Reset corner position which falls on a manhole cover using ties by Comstock and Davis, and Suburban Engineering. Updated ties.

June 19, 1974 - Found corner position on manhole cover and updated ties.

July 29, 1977 - Found corner position on manhole cover and updated ties.

July 14, 1980 - Found corner position on manhole cover and updated ties.

February 6, 1986 - Reset corner position on manhole cover using area resurvey. Set P.K. nails 2' North and East. Updated ties.

July 14, 1989 - Found corner position on manhole cover and updated ties.

April 18, 1990 - Found corner position on manhole cover and updated ties.

July 28, 1994 - Found corner position on manhole cover with P.K. nails 2' North, South, East and West. Updated ties.

August 19, 2003 - Established NAD 1983 (1996 adj.) Anoka County project coordinates by static GPS methods.

August 19, 2008 - Found corner position on manhole cover. Set punch marks on manhole rim to the North, South, East and West. Updated ties.

November 14, 2014 - Found corner position on manhole cover. Verified position by VRS GPS methods. Updated ties.

December 18, 2019 - Reset corner position on manhole cover using static GPS methods. Set P.K. nails 2' North, South, East and West. Verified position by VRS GPS methods. Updated ties.

August 11, 2022 - Found corner position on manhole cover. Verified position by VRS GPS methods Updated ties.