

# CERTIFICATE OF LOCATION OF GOVERNMENT CORNER

County of Anoka

State of Minnesota

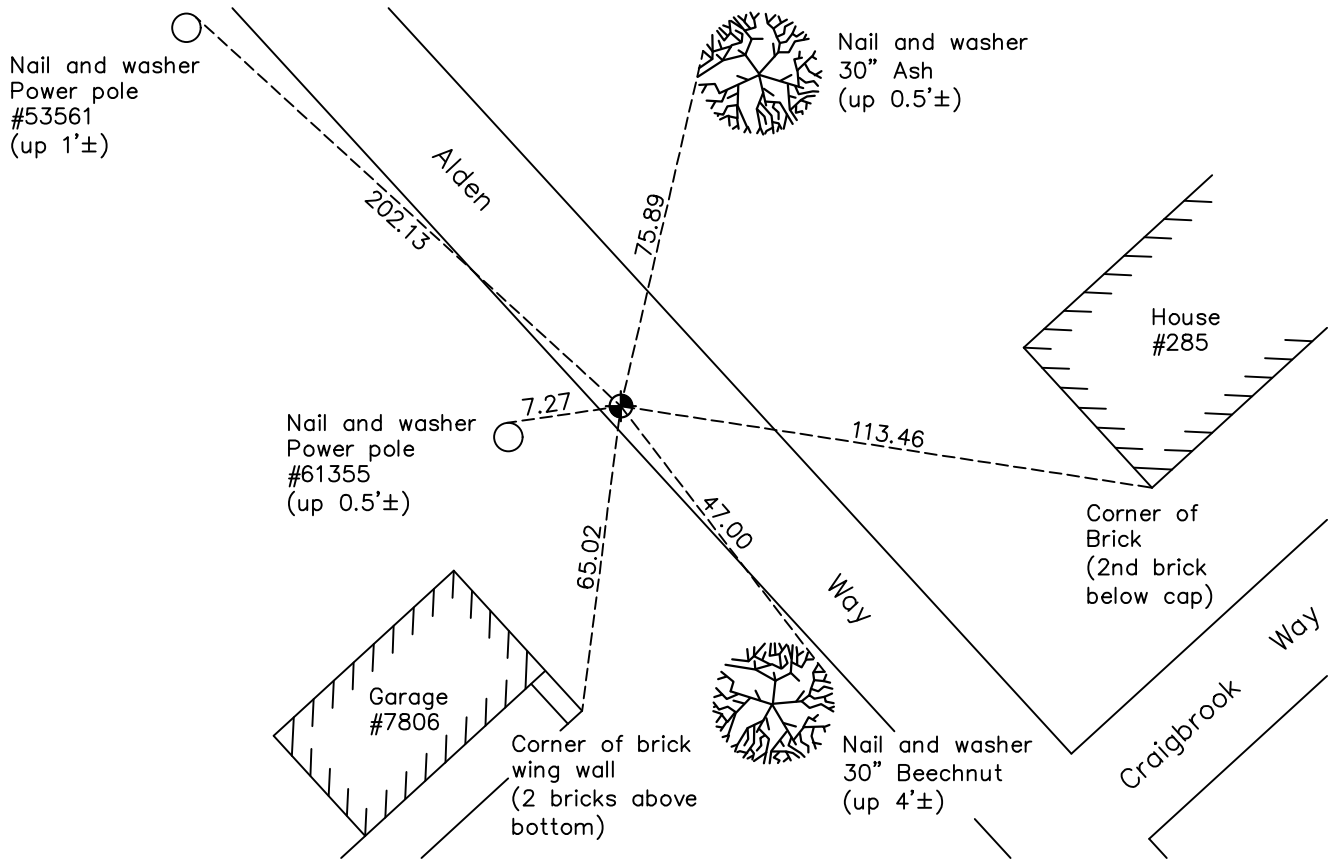
Witness Corner of Sec. 10 Township 30 Range 24  
(on north line of section)

On the 13th day of December, 1982, the described corner was evidenced by area resurvey

and to perpetuate the location of said corner, at the exact location thereof, a permanent marker was placed consisting of a cast iron monument

AND on the 4th day of August, 2022, said permanent marker was found flush and the  
ties were updated

Updated reference ties are as shown below.



Revision Date  
2/23/2023

N.A.D. 1983 Coordinates  
(1996 Adjustment)

County Project Coordinates	
Northing	<u>126441.5149</u>
Easting	<u>496670.4260</u>
Date	<u>8/19/03</u>

I hereby certify that this United States public land survey monument record is correct and complete to the best of my knowledge and belief.

David Zieglmeier Date 1/29/24

David Zieglmeier Anoka County Surveyor  
Minnesota License Number 46179

# HISTORY OF GOVERNMENT CORNER

Page No. 22

County of Anoka

State of Minnesota

Witness Corner of Sec. 10 Township 30 Range 24  
(on north line of section)

## **CORNER HISTORY:**

November 1847 - This corner was established by Issac N. Higbee, Deputy Surveyor. Higbee marked this position by "set quarter section post" with two bearing trees marked as accessories. 40.00 chains west of SE Corner Section 3. Higbee marked this position by "set post for meander" with one bearing tree marked as an accessory. 47.00 chains west of SE Corner Section 3.

Plat of RIVERSIDE PLAT NUMBER ONE shows no monuments found or set at North Quarter or Meander Corner.

July 1959, Plat of PEARSON'S CRAIGWAY ESTATES shows no monuments found or set at North Quarter or Meander Corner.

December 1959, Plat of PEARSON'S CRAIGWAY ESTATES 2ND ADDITION shows no monuments found or set at North Quarter or Meander Corner.

December 13, 1982 - New Witness Corner position computed 135.00 feet west on the north line of North Quarter calculated position. Set cast iron monument at new Witness Corner position using area resurvey. GLO Meander Corner location searched no evidence found due to erosion along river bank.

\*\*\*\*Position of North Quarter Corner Section 10 falls within house 285 Craigbrook Way NE. No Monument set.

3/2/83, 7/14/89, 7/28/94 - Found cast iron monument (Witness Corner) and updated ties.

August 19, 2003 - Established NAD 1983 (1996 adj.) Anoka County project coordinates by static GPS methods. (Witness Corner)

November 14, 2014 - Found P.K. nail in blacktop core hole. In need of cast iron monument (Witness Corner).

April 2, 2015 - Set cast iron monument (Witness Corner) using static GPS methods. Verified position by VRS GPS methods. Updated ties.

11/26/19, 8/4/22 - Found cast iron monument (Witness Corner). Verified position by VRS GPS methods. Updated ties.

January 29, 2024 North Quarter calculated position. No Monument set (Index # 1662)  
N=126,442.797, NAD 1983 (1996 adj.) Anoka County Coordinates,  
E=496805.441