

CERTIFICATE OF LOCATION OF GOVERNMENT CORNER

County of Anoka

State of Minnesota

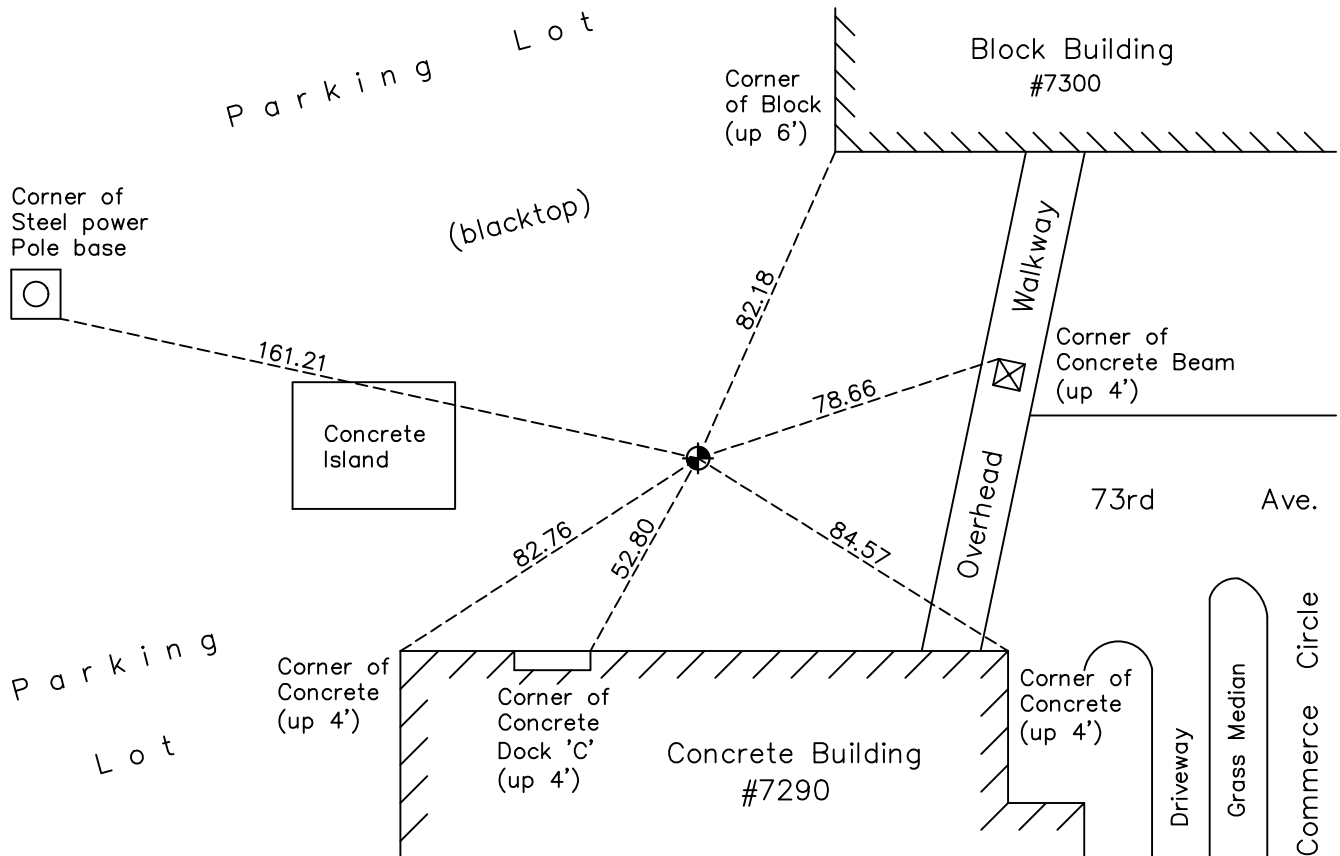
East 1/4 Corner of Sec. 10 Township 30 Range 24

On the 19th day of August, 1960, the described corner was evidenced by a granite monument

and to perpetuate the location of said corner, at the exact location thereof, a permanent marker was placed consisting of a cast iron monument

AND on the 4th day of August, 2022, said permanent marker was found flush and the ties were updated

Updated reference ties are as shown below.



N.A.D. 1983 Coordinates
(1996 Adjustment)

| County Project Coordinates | |
|----------------------------|--------------------|
| Northing | <u>123828.5322</u> |
| Easting | <u>499516.6884</u> |
| Date | <u>8/18/03</u> |

Revision Date
12/21/22

I hereby certify that this United States public land survey monument record is correct and complete to the best of my knowledge and belief.

David Zieglmeier Date 12/11/23

David Zieglmeier Anoka County Surveyor
Minnesota License Number 46179

HISTORY OF GOVERNMENT CORNER

Page No. 23

County of Anoka

State of Minnesota

East 1/4 Corner of Sec. 10 Township 30 Range 24

CORNER HISTORY:

April 7, 1943 - Harvey Cartwright found a 6" x 6" granite up 0.5' and updated ties.

August 19, 1960 - Found granite monument up 0.5' and updated ties.

July 6, 1966 - Found granite monument and updated ties.

August 18, 1970 - Found granite monument and updated ties.

June 24, 1974 - Found granite monument and updated ties.

September 24, 1976 - Found granite monument missing. Replaced with iron pipe flush in blacktop road. Corner matches iron in plat to the North. Updated ties.

June 30, 1977 - Set cast iron monument flush in blacktop road. Updated ties.

July 14, 1980 - Found cast iron monument and updated ties.

July 3, 1986 - Found cast iron monument and updated ties.

July 24, 1989 - Found cast iron monument and updated ties.

July 28, 1994 - Found cast iron monument and updated ties.

May 2, 1996 - Found cast iron monument and set construction ties prior to construction. Removed monument.

April 11, 1997 - Set cast iron monument after construction using construction ties. Updated corner ties.

August 18, 2003 - Found cast iron monument. Updated ties. Established NAD 1983 (1996 adj.) Anoka County project coordinates by static GPS methods.

September 2, 2008 - Found cast iron monument and updated ties.

November 12, 2014 - Found cast iron monument. Verified position by VRS GPS methods. Updated ties.

November 27, 2019 - Found cast iron monument. Verified position by VRS GPS methods. Updated ties.

August 4, 2022 - Found cast iron monument. Verified position by VRS GPS methods. Updated ties.