

# CERTIFICATE OF LOCATION OF GOVERNMENT CORNER

County of Anoka

State of Minnesota

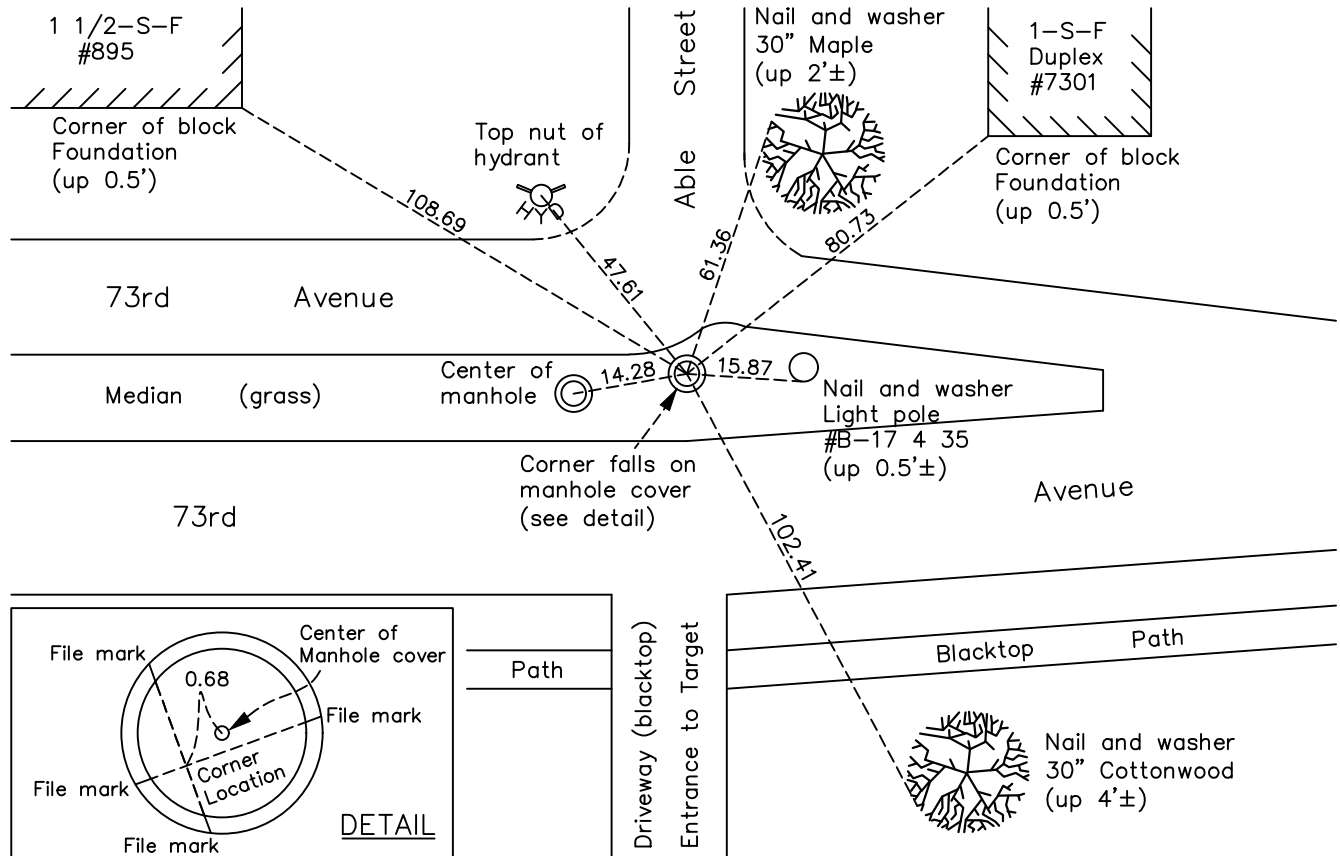
## East 1/4 Corner of Sec. 11 Township 30 Range 24

On the 11th day of January, 1961, the described corner was evidenced by a granite monument

and to perpetuate the location of said corner, at the exact location thereof, a permanent marker was placed consisting of file marks on the manhole rim NW, SE, NE and SW of corner location which falls on the manhole cover (granite monument was removed prior to sewer const.)

AND on the 10th day of August, 2022, said permanent marker was found and the ties were updated

Updated reference ties are as shown below.



N.A.D. 1983 Coordinates  
(1996 Adjustment)

County Project Coordinates	
Northing	<u>123798.4206</u>
Easting	<u>504710.0918</u>
Date	<u>2/15/05</u>

Revision Date  
12/21/22

I hereby certify that this United States public land survey monument record is correct and complete to the best of my knowledge and belief.

*David Zieglmeier* Date 12/11/23

David Zieglmeier Anoka County Surveyor  
Minnesota License Number 46179

# HISTORY OF GOVERNMENT CORNER

Page No. 24

County of Anoka

State of Minnesota

## East 1/4 Corner of Sec. 11 Township 30 Range 24

### **CORNER HISTORY:**

April 2, 1943 - Harvey Cartwright found a 6" x 6" granite monument up 1' and updated the ties.

July 18, 1960 - Found granite monument up 1.1' and updated ties.

January 11, 1961 - Found granite monument. Set construction ties and updated corner ties prior to sewer construction. Removed granite monument.

April 18, 1962 - Found corner position falls on manhole cover after sewer construction. Created file marks on manhole rim to the North, South, East and West of corner position. Corner position is at intersection of file marks. Updated ties.

July 28, 1964 - Found corner position on manhole cover and updated ties.

July 5, 1966 - Found corner position on manhole cover and updated ties.

August 17, 1970 - Found corner position on manhole cover and updated ties.

June 28, 1974 - Found manhole cover had moved. Used corner ties to set new position.

July 29, 1977 - Found corner position on manhole cover and updated ties.

July 14, 1980 - Found corner position on manhole cover and updated ties.

July 21, 1989 - Found corner position on manhole cover and updated ties.

July 27, 1994 - Found corner position on manhole cover and updated ties.

February 15, 2005 - Established NAD 1983 (1996 adj.) Anoka County project coordinates by static GPS methods.

November 20, 2008 - Found corner position on manhole cover using file marks in manhole rim. Checked position against the I-File (I80). Updated ties.

November 7, 2014 - Found corner position on manhole cover. Verified position by VRS GPS methods. Updated ties.

November 27, 2019 - Found corner position on manhole cover. Verified position by VRS GPS methods. Updated ties.

August 10, 2022 - Found corner position on manhole cover. Verified position by VRS GPS methods. Updated ties.