

# CERTIFICATE OF LOCATION OF GOVERNMENT CORNER

County of Anoka

State of Minnesota

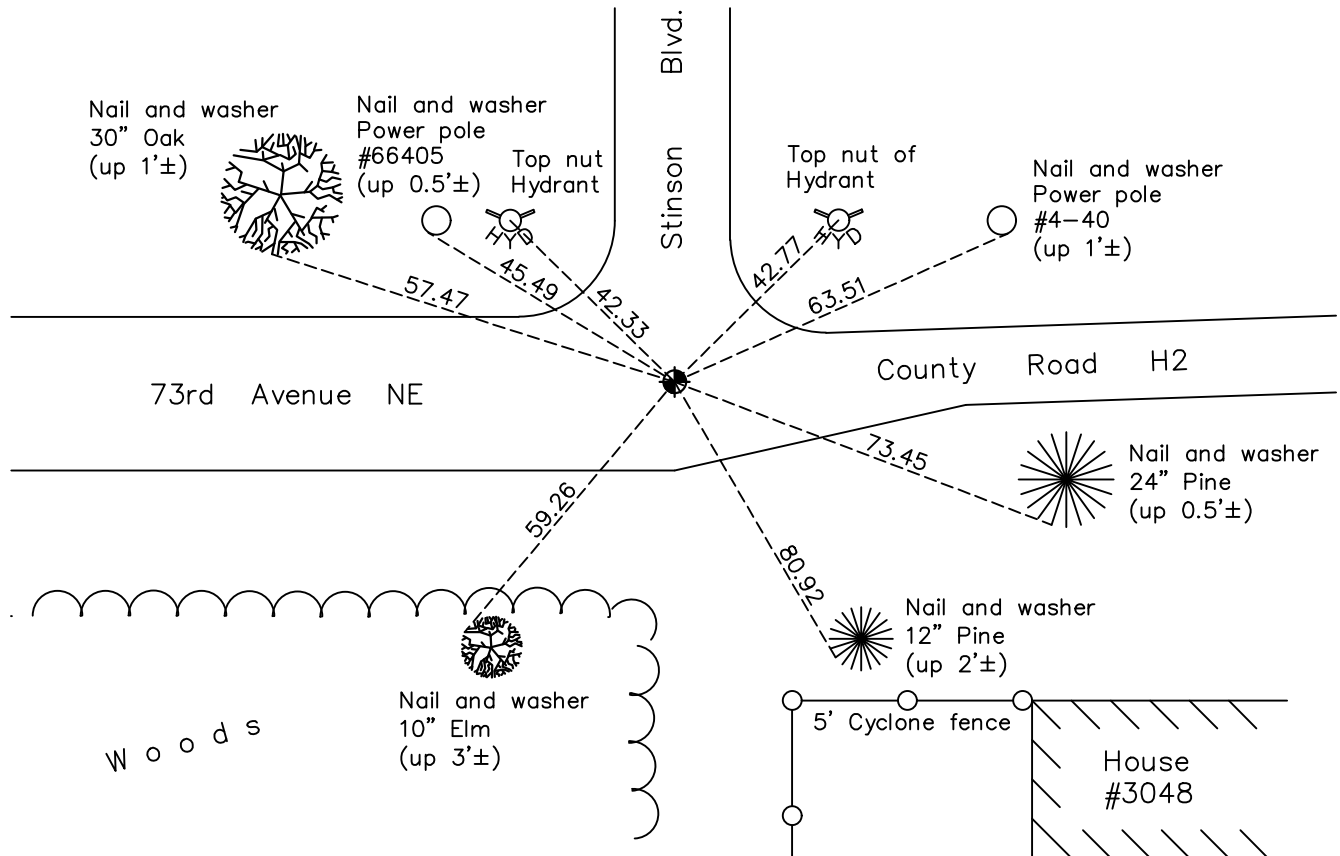
## East 1/4 Corner of Sec. 12 Township 30 Range 24

On the 19th day of September, 1961, the described corner was evidenced by an 8" X 8" granite monument

and to perpetuate the location of said corner, at the exact location thereof, a permanent marker was placed consisting of a Ramsey County cast iron monument (under a cover and down 1.4')

AND on the 10th day of August, 2022, said permanent marker was found and the ties were updated

Updated reference ties are as shown below.



Revision Date  
12/21/22

N.A.D. 1983 Coordinates  
(1996 Adjustment)

County Project Coordinates	
Northing	<u>123757.7619</u>
Easting	<u>510046.0694</u>
Date	<u>7/13/04</u>

I hereby certify that this United States public land survey monument record is correct and complete to the best of my knowledge and belief.

*David Zieglmeier* Date 12/11/23

David Zieglmeier Anoka County Surveyor  
Minnesota License Number 46179

# HISTORY OF GOVERNMENT CORNER

Page No. 25

County of Anoka

State of Minnesota

## East 1/4 Corner of Sec. 12 Township 30 Range 24

### **CORNER HISTORY:**

April 2, 1943 - Harvey Cartwright found a 8" x 8" granite monument down 4" in road. Updated ties.

September 11, 1960 - Found granite monument down 0.5' and updated ties.

September 19, 1961 - Found granite monument and updated ties prior to nearby sewer construction.

July 28, 1964 - Found granite monument and updated ties.

July 5, 1966 - Found granite monument and updated ties.

August 17, 1970 - Found granite monument and updated ties.

June 24, 1974 - Found granite monument and updated ties.

July 29, 1977 - Found granite monument and updated ties.

July 14, 1980 - Found granite monument and updated ties.

July 2, 1986 - Found Ramsey County cast iron monument and updated ties.

July 3, 1989 - Found Ramsey County cast iron monument and updated ties.

July 25, 1994 - Found Ramsey County cast iron monument and updated ties.

July 13, 2004 - Established NAD 1983 (1996 adj.) Anoka County project coordinates by static GPS methods.

September 3, 2008 - Found Ramsey County cast iron monument down 2' in tube w/cover. Updated ties.

May 3, 2010 - Found Ramsey County cast iron monument down 2' in tube w/cover and updated ties prior to construction.

November 12, 2014 - Found Ramsey County cast iron monument down 2' in tube w/cover. Verified position by VRS GPS methods. Updated ties.

November 27, 2019 - Found Ramsey County cast iron monument down 2' in tube w/cover. Verified position by VRS GPS methods. Updated ties.

August 10, 2022- Found Ramsey County cast iron monument down 1.4' in tube w/cover. Verified position by VRS GPS methods. Updated ties.