

# CERTIFICATE OF LOCATION OF GOVERNMENT CORNER

County of Anoka

State of Minnesota

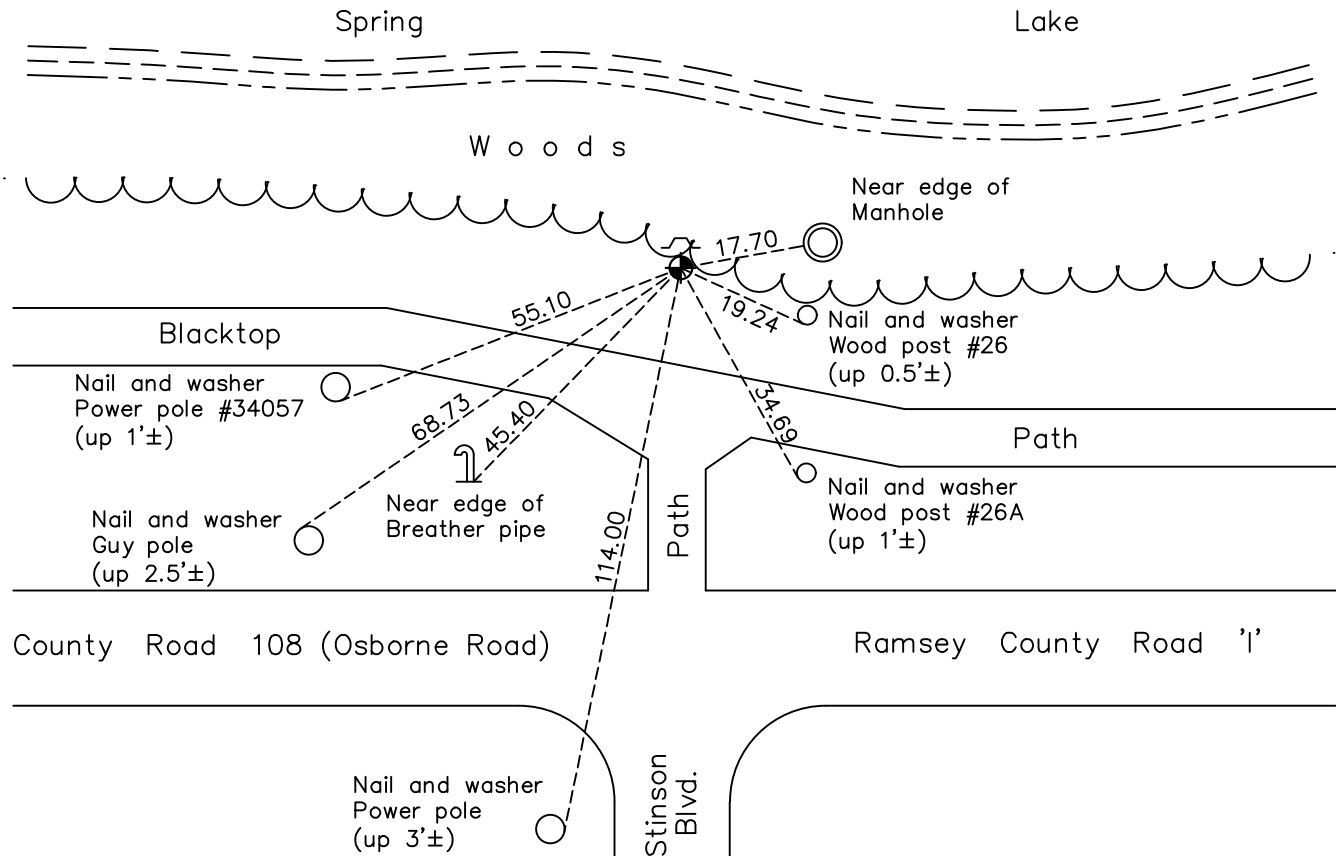
Witness Corner of Sec. 12 Township 30 Range 24  
(on east line of section)

On the 12th day of September, 1960, the described corner was evidenced by a granite  
monument

and to perpetuate the location of said corner, at the exact location thereof, a permanent marker was placed consisting of a cast iron monument with a sign and post on the north side

AND on the 9th day of August, 2022, said permanent marker was found down 0.5'± and  
the ties were updated

Updated reference ties are as shown below.



Revision Date  
12/22/22

N.A.D. 1983 Coordinates  
(1996 Adjustment)

County Project Coordinates	
Northing	<u>126235.5761</u>
Easting	<u>510033.0107</u>
Date	<u>7/22/03</u>

I hereby certify that this United States public land survey monument record is correct and complete to the best of my knowledge and belief.  
*David Zieglmeier* Date 12/11/23  
David Zieglmeier Anoka County Surveyor  
Minnesota License Number 46179

# HISTORY OF GOVERNMENT CORNER

Page No. 26

County of Anoka

State of Minnesota

Witness Corner of Sec. 12 Township 30 Range 24  
(on east line of section)

## **CORNER HISTORY:**

April 1, 1943 - Harvey Cartwright found a 8" x 8" granite monument flush and updated the ties.

September 12, 1960 - Found granite up 0.5' and broken off. Updated ties.

July 5, 1966 - Found granite up 0.5' and broken off. Updated ties.

August 17, 1970 - Found granite up 0.5' and broken off. Updated ties.

June 25, 1974 - Found broken granite monument and replaced with a cast iron monument down 0.5'± using corner ties. Updated ties.

July 29, 1977 - Found cast iron monument and updated ties.

July 14, 1980 - Found cast iron monument and updated ties.

July 2, 1986 - Found cast iron monument and updated ties.

July 3, 1989 - Found cast iron monument and updated ties.

Unknown date - Found cast iron monument and updated ties.

July 27, 1994 - Found cast iron monument and updated ties.

February 18, 1999 - Found cast iron monument and updated ties.

July 22, 2003 - Established NAD 1983 (1996 adj.) Anoka County project coordinates by static GPS methods.

August 28, 2008 - Found cast iron monument and updated ties.

November 12, 2014 - Found cast iron monument. Verified position by VRS GPS methods. Updated ties.

November 27, 2019 - Found cast iron monument. Verified position by VRS GPS methods. Updated ties.

August 9, 2022 - Found cast iron monument down 0.5'±. Verified position by VRS GPS methods. Updated ties.