

CERTIFICATE OF LOCATION OF GOVERNMENT CORNER

County of Anoka

State of Minnesota

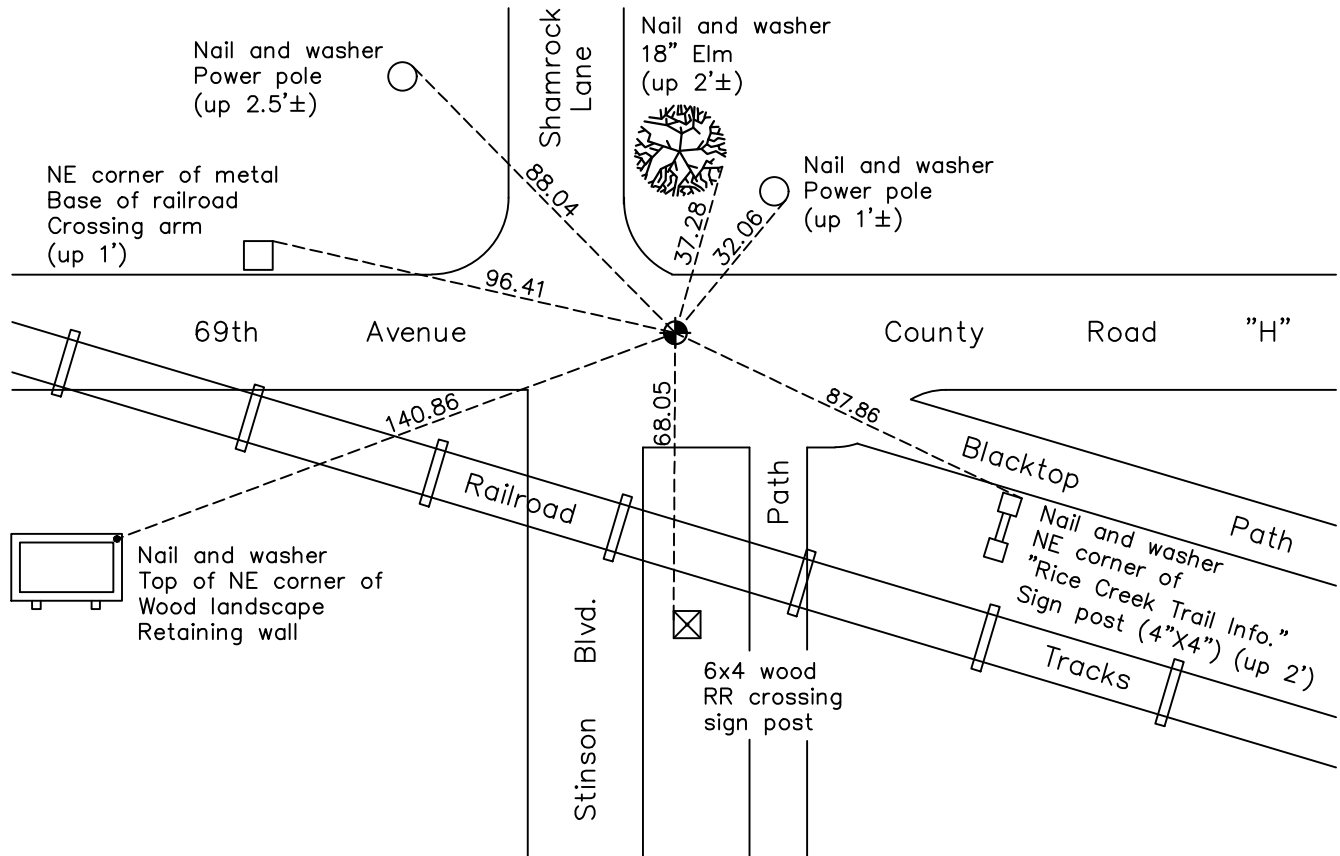
Northeast Corner of Sec. 13 Township 30 Range 24

On the 22nd day of June, 1960, the described corner was evidenced by a granite monument

and to perpetuate the location of said corner, at the exact location thereof, a permanent marker was placed consisting of a cast iron monument

AND on the 10th day of August, 2022, said permanent marker was found flush and the ties were updated.

Updated reference ties are as shown below.



N.A.D. 1983 Coordinates
(1996 Adjustment)

County Project Coordinates	
Northing	<u>121115.1989</u>
Easting	<u>510055.2312</u>
Date	<u>7/22/03</u>

Revision Date
12/22/22

I hereby certify that this United States public land survey monument record is correct and complete to the best of my knowledge and belief.

David Zieglmeier Date 12/11/23

David Zieglmeier Anoka County Surveyor
Minnesota License Number 46179

HISTORY OF GOVERNMENT CORNER

Page No. 27

County of Anoka

State of Minnesota

Northeast Corner of Sec. 13 Township 30 Range 24

CORNER HISTORY:

March 30, 1943 - Harvey Cartwright found a 8" x 8" granite monument flush and updated the ties.

June 22, 1960 - Found granite monument down 6" and updated ties.

September 19, 1961 - Found granite monument and updated ties.

July 24, 1964 - Found granite monument and updated ties.

July 5, 1966 - Found granite monument and replaced with a cast iron monument. Updated ties.

August 19, 1968 - Found cast iron monument and updated ties.

September 26, 1968 - Found cast iron monument and added additional ties prior to construction. Removed monument.

August 14, 1970 - Found cast iron monument and updated ties.

June 24, 1974 - Found cast iron monument and updated ties.

July 29, 1977 - Found cast iron monument and updated ties.

July 15, 1980 - Found cast iron monument and updated ties.

July 1, 1986 - Found cast iron monument and updated ties.

July 3, 1989 - Found cast iron monument and updated ties.

July 26, 1994 - Found cast iron monument and updated ties.

August 28, 1996 - Replaced cast iron monument and updated ties.

July 22, 2003 - Established NAD 1983 (1996 adj.) Anoka County project coordinates by static GPS methods.

September 3, 2008 - Found cast iron monument and updated ties.

November 5, 2014 - Found cast iron monument down and raised flush. Updated ties.

November 27, 2019 - Found cast iron monument. Verified position by VRS GPS methods. Updated ties.

June 11, 2020 - Set construction ties and removed CIM for road construction

September 2, 2020 - Reset cast iron monument, set flush to surface, using static GPS methods

October 5, 2020 - Found cast iron monument recently reset, verified position with VRS GPS and updated ties

August 10, 2022 - Found cast iron monument flush. Verified position by VRS GPS methods. Updated ties.