

# CERTIFICATE OF LOCATION OF GOVERNMENT CORNER

County of Anoka

State of Minnesota

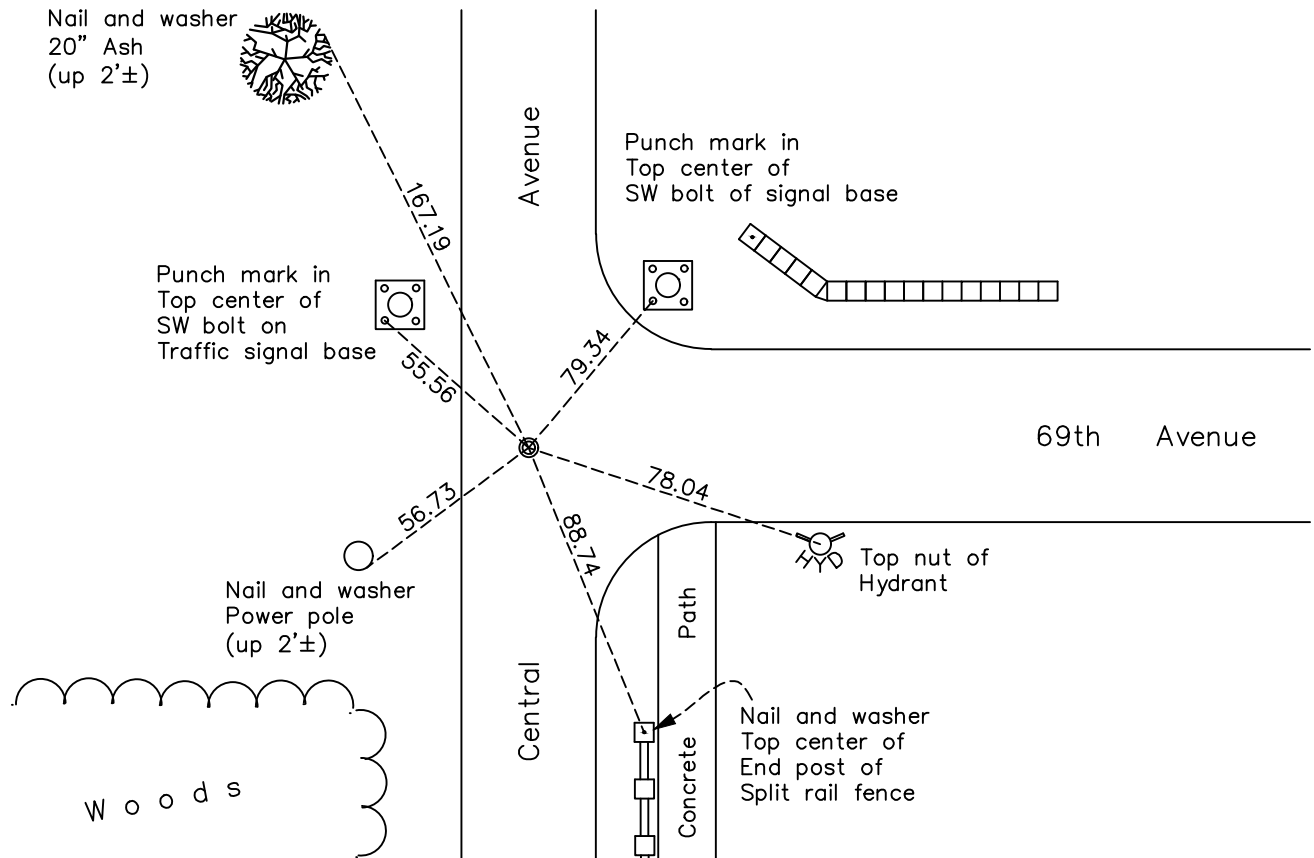
## South 1/4 Corner of Sec. 12 Township 30 Range 24

On the 12th day of September, 1960, the described corner was evidenced by a P.K. nail

and to perpetuate the location of said corner, at the exact location thereof, a permanent marker was placed consisting of a 1/2" iron pipe

AND on the 5th day of August, 2022, said permanent marker was found flush and the ties were updated.

Updated reference ties are as shown below.



Revision Date  
 12/22/22

N.A.D. 1983 Coordinates  
 (1996 Adjustment)

County Project Coordinates	
Northing	121148.8497
Easting	507420.8701
Date	7/22/03

I hereby certify that this United States public land survey monument record is correct and complete to the best of my knowledge and belief.  
*David Zieglmeier* Date 12/11/23  
 David Zieglmeier Anoka County Surveyor  
 Minnesota License Number 46179

# HISTORY OF GOVERNMENT CORNER

Page No. 28

County of Anoka

State of Minnesota

## South 1/4 Corner of Sec. 12 Township 30 Range 24

### **CORNER HISTORY:**

August 18, 1944 - Harvey Cartwright found a cross in pavement as of survey of Ridge (1920) and also of Corr (1908). Set a concrete reference monument on east edge of pavement. Updated ties to cross in paved road.

September 12, 1960 - Found P.K. spike in road and updated ties.

March 24, 1964 - Found P.K. spike in road and added additional ties prior to road construction.

May 11, 1964 - Found P.K. spike in road and updated ties.

July 5, 1966 - Set cast iron monument flush after road construction. Updated ties.

August 17, 1970 - Found cast iron monument and updated ties.

June 24, 1974 - Found cast iron monument and updated ties.

June 29, 1977 - Found cast iron monument and updated ties.

July 27, 1978 - Found cast iron monument and updated ties.

September 25, 1978 - Found cast iron monument down and raised flush. Updated ties.

July 15, 1980 - Found cast iron monument and updated ties.

July 21, 1989 - Found cast iron monument and updated ties.

July 26, 1994 - Found cast iron monument and updated ties.

August 6, 1997 - Found cast iron monument and set construction ties prior to road construction.

June 18, 1999 - Set 1/2" iron pipe and updated ties.

July 22, 2003 - Established NAD 1983 (1996 adj.) Anoka County project coordinates by static GPS methods.

September 3, 2008 - Found 1/2" iron pipe and updated ties.

October 30, 2014 - Found 1/2" iron pipe and updated ties.

November 8, 2016 - Found 1/2" iron pipe bent. Replaced with a new 1/2" iron pipe w/cap, using location of the base of bent iron pipe. Updated ties.

December 2, 2019 - Found 1/2" iron pipe w/cap. Verified position by VRS GPS methods. Updated ties.

August 5, 2022 - Found 1/2" iron pipe w/cap. Verified position by VRS GPS methods. Updated ties.