

CERTIFICATE OF LOCATION OF GOVERNMENT CORNER

County of Anoka

State of Minnesota

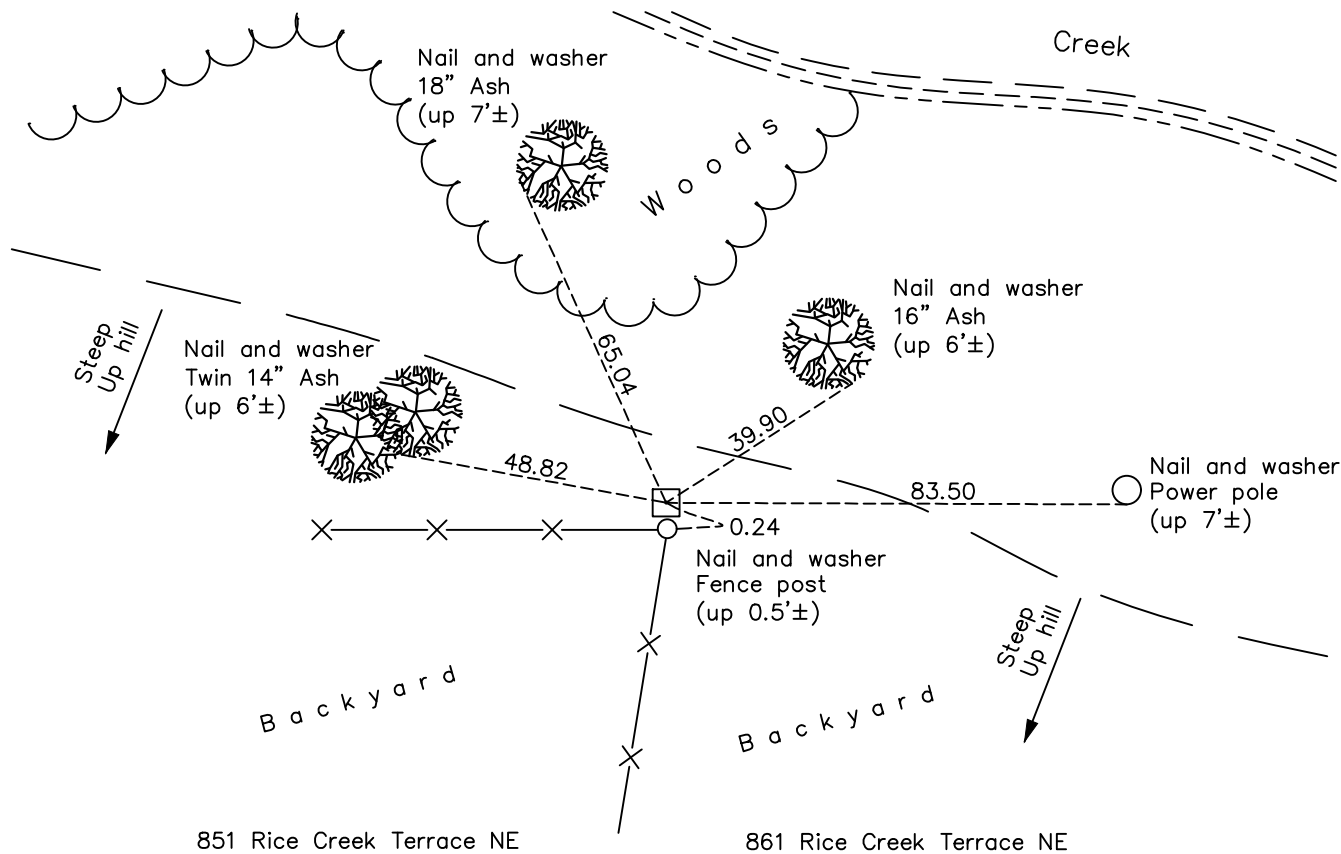
Northwest Corner of Sec. 13 Township 30 Range 24

On the 10th day of February, 1960, the described corner was evidenced by a granite monument

and to perpetuate the location of said corner, at the exact location thereof, a permanent marker was placed consisting of the same granite monument with a sign on the corner fence post

AND on the 19th day of September, 2022, said permanent marker was found down 0.5'± and the ties were updated

Updated reference ties are as shown below.



Revision Date
 12/22/22

N.A.D. 1983 Coordinates
 (1996 Adjustment)

County Project Coordinates	
Northing	121188.8420
Easting	504704.8253
Date	11/20/08

I hereby certify that this United States public land survey monument record is correct and complete to the best of my knowledge and belief.
David Zieglmeier Date 12/11/23
 David Zieglmeier Anoka County Surveyor
 Minnesota License Number 46179

HISTORY OF GOVERNMENT CORNER

Page No. 29

County of Anoka

State of Minnesota

Northwest Corner of Sec. 13 Township 30 Range 24

CORNER HISTORY:

April 2, 1943 - Harvey Cartwright found a 8" x 8" granite monument down 4' and updated ties.

April 30, 1955 - Found granite monument and updated ties by W.J. Lundstrom.

February 10, 1960 - Found granite monument down 1.5' and leaning NW. Updated ties.

June 3, 1964 - Found granite monument down 2.5' and updated ties.

July 5, 1966 - Found granite monument and updated ties.

August 17, 1970 - Found granite monument and updated ties.

June 19, 1974 - Found granite monument and updated ties.

July 29, 1977 - Found granite monument and updated ties.

July 22, 1980 - Found granite monument and updated ties.

July 1, 1986 - Found granite monument and updated ties.

July 20, 1989 - Found granite monument leaning West. Updated ties.

August 5, 1994 - Found granite monument down 1± and leaning. Straightened and updated ties.

March 2, 2005 - Found granite monument and updated ties.

November 20, 2008 - Found granite monument and moved East 0.17' and South 0.05' to a position that was used to locate adjoining plats and agrees with area resurvey. Established NAD 1983 (1996 adj.) Anoka County project coordinates by static GPS methods. Updated ties.

November 7, 2014 - Found granite monument down 0.5'± and updated ties.

December 2, 2019 - Found granite monument down 0.5'±. Verified position by VRS GPS methods. Updated ties.

September 19, 2022 - Found granite monument down 0.5'±. Verified position by VRS GPS methods. Updated ties.