

CERTIFICATE OF LOCATION OF GOVERNMENT CORNER

County of Anoka

State of Minnesota

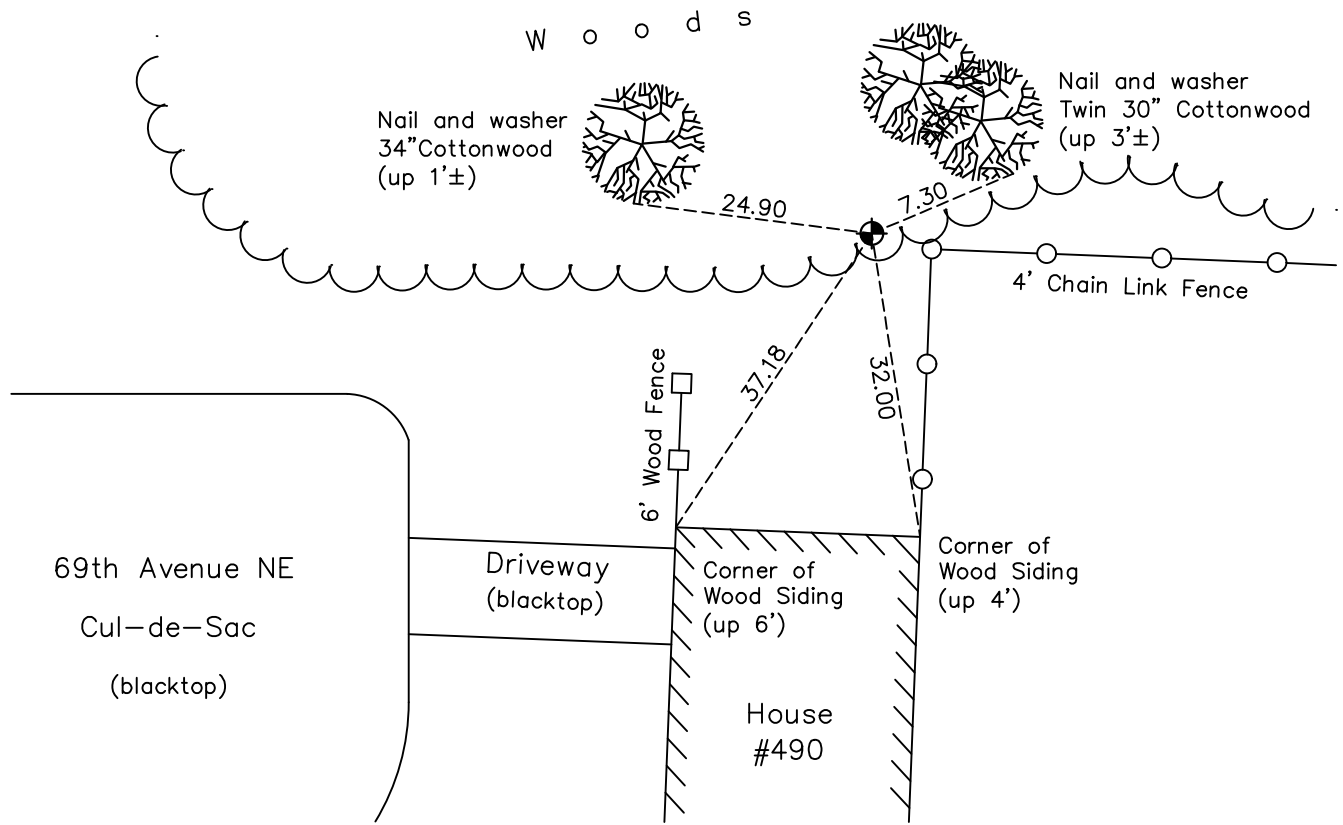
North $\frac{1}{4}$ Corner of Sec. 14 Township 30 Range 24

On the 17th day of November, 1965, the described corner was evidenced by ties and platting

and to perpetuate the location of said corner, at the exact location thereof, a permanent marker was placed consisting of a cast iron monument

AND on the 10th day of August, 2022, said permanent marker was found down 0.5'± and the ties were updated

Updated reference ties are as shown below.



N
W ANOKA COUNTY SURVEYOR E
S

Revision Date
12/22/22

N.A.D. 1983 Coordinates
(1996 Adjustment)

County Project Coordinates	
Northing	<u>121189.0030</u>
Easting	<u>502182.0797</u>
Date	<u>12/21/04</u>

I hereby certify that this United States public land survey monument record is correct and complete to the best of my knowledge and belief.

David Zieglmeier Date 12/11/23

David Zieglmeier Anoka County Surveyor
Minnesota License Number 46179

HISTORY OF GOVERNMENT CORNER

Page No. 30

County of Anoka

State of Minnesota

North 1/4 Corner of Sec. 14 Township 30 Range 24

CORNER HISTORY:

September 4, 1943 - Harvey Cartwright found a granite monument lying down on the ground, heaved out by the frost. Set a 6" x 6" granite monument up 0.5' and updated ties.

May 1955 - Found granite monument and updated ties.

February 8, 1960 - Found granite monument up 0.3' and updated ties.

September 19, 1961 - Found granite monument and updated ties.

July 27, 1964 - Could not find granite monument. May still be in place under 9' of clay fill. Set cast iron monument using corner ties and platting. Updated ties.

November 17, 1965 - Found cast iron monument and updated ties.

July 5, 1966 - Found cast iron monument and updated ties.

August 17, 1970 - Found cast iron monument and updated ties.

June 19, 1974 - Found cast iron monument and updated ties.

August 1, 1977 - Found cast iron monument and updated ties.

July 16, 1980 - Found cast iron monument and updated ties.

July 1, 1986 - Found cast iron monument and updated ties.

July 19, 1989 - Found cast iron monument and updated ties.

July 27, 1994 - Found cast iron monument and updated ties.

December 21, 2004 - Established NAD 1983 (1996 adj.) Anoka County project coordinates by static GPS methods.

September 4, 2008 - Found cast iron monument and updated ties.

October 31, 2014 - Found cast iron monument down 0.3'± and updated ties.

December 2, 2019 - Found cast iron monument. Verified position by VRS GPS methods. Updated ties.

August 10, 2022 - Found cast iron monument down 0.3±. Verified position by VRS GPS methods. Updated ties.