

# CERTIFICATE OF LOCATION OF GOVERNMENT CORNER

County of Anoka

State of Minnesota

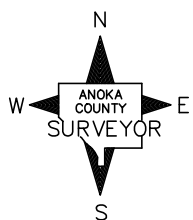
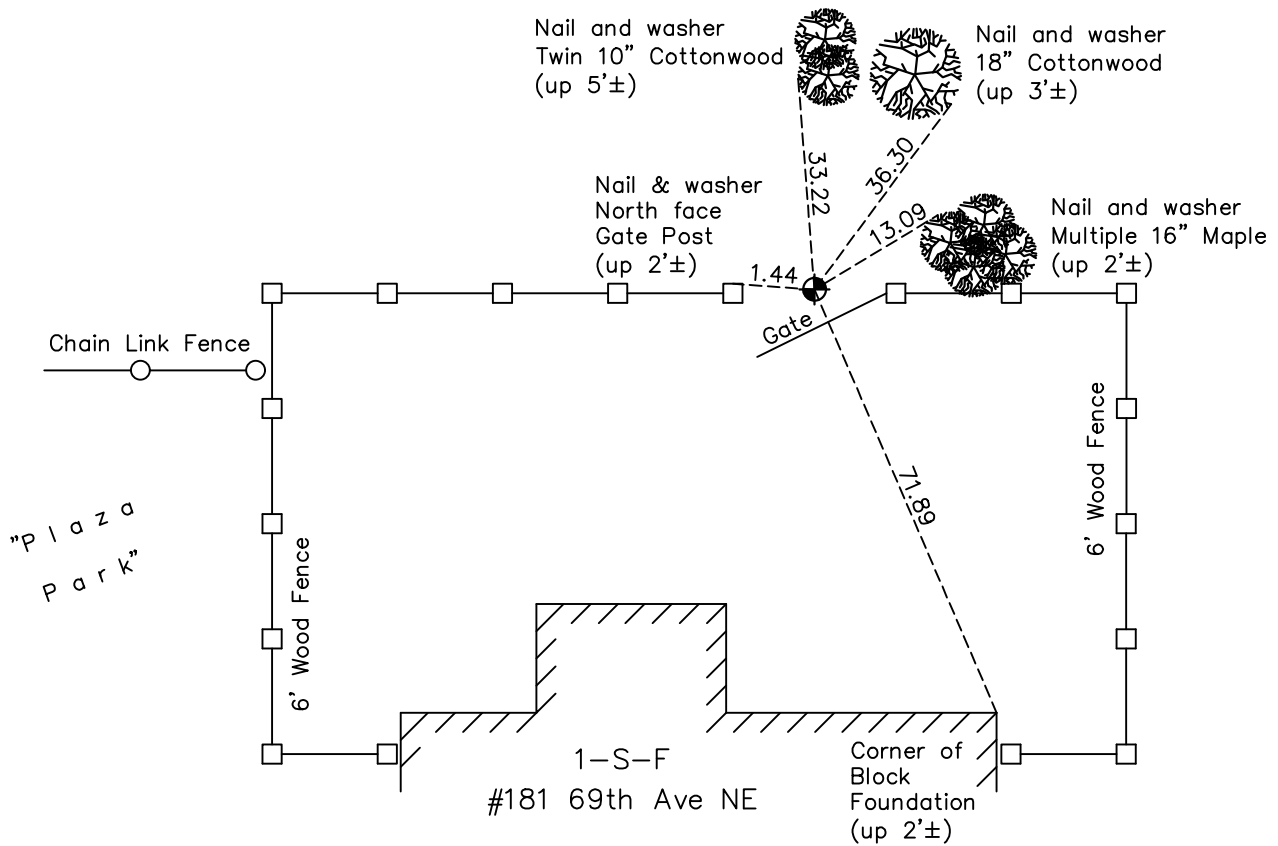
## Southwest Corner of Sec. 11 Township 30 Range 24

On the 11th day of May, 1964, the described corner was evidenced by a granite monument

and to perpetuate the location of said corner, at the exact location thereof, a permanent marker was placed consisting of a cast iron monument

AND on the 10th day of August, 2022, said permanent marker was found down 0.3'± and the ties were updated

Updated reference ties are as shown below.



Revision Date  
12/22/22

N.A.D. 1983 Coordinates  
(1996 Adjustment)

County Project Coordinates	
Northing	<u>121189.5814</u>
Easting	<u>499555.3289</u>
Date	<u>12/28/04</u>

I hereby certify that this United States public land survey monument record is correct and complete to the best of my knowledge and belief.

*David Zieglmeier* Date 12/11/23

David Zieglmeier Anoka County Surveyor  
Minnesota License Number 46179

# HISTORY OF GOVERNMENT CORNER

Page No. 31

County of Anoka

State of Minnesota

## Southwest Corner of Sec. 11 Township 30 Range 24

### **CORNER HISTORY:**

March 30, 1943 - Harvey Cartwright found a 8" x 8" granite monument up 8". Updated ties.

August 19, 1960 - Found granite monument flush with an iron pipe on the North side. Updated ties.

May 12, 1964 - Found granite monument up 0.3' and updated ties.

July 5, 1966 - Found granite monument up 0.3' and leaning 45° West. Updated ties.

August 17, 1970 - Set cast iron monument flush using corner ties. Updated ties.

June 24, 1974 - Found cast iron monument and updated ties.

August 1, 1977 - Found cast iron monument and updated ties.

September 6, 1988 - Found cast iron monument flush and updated ties.

August 3, 1989 - Found cast iron monument and updated ties.

July 27, 1994 - Found cast iron monument and updated ties.

December 28, 2004 - Established NAD 1983 (1996 adj.) Anoka County project coordinates by static GPS methods.

September 3, 2008 - Found cast iron monument and updated ties.

November 3, 2014 - Found cast iron monument and updated ties.

December 12, 2019 - Found cast iron monument flush. Verified position by VRS GPS methods. Updated ties.

August 10, 2022 - Found cast iron monument down 0.3'±. Verified position by VRS GPS methods. Updated ties.