

CERTIFICATE OF LOCATION OF GOVERNMENT CORNER

County of Anoka

State of Minnesota

Meander Corner of Sec. 15 Township 30 Range 24

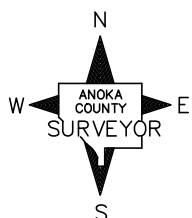
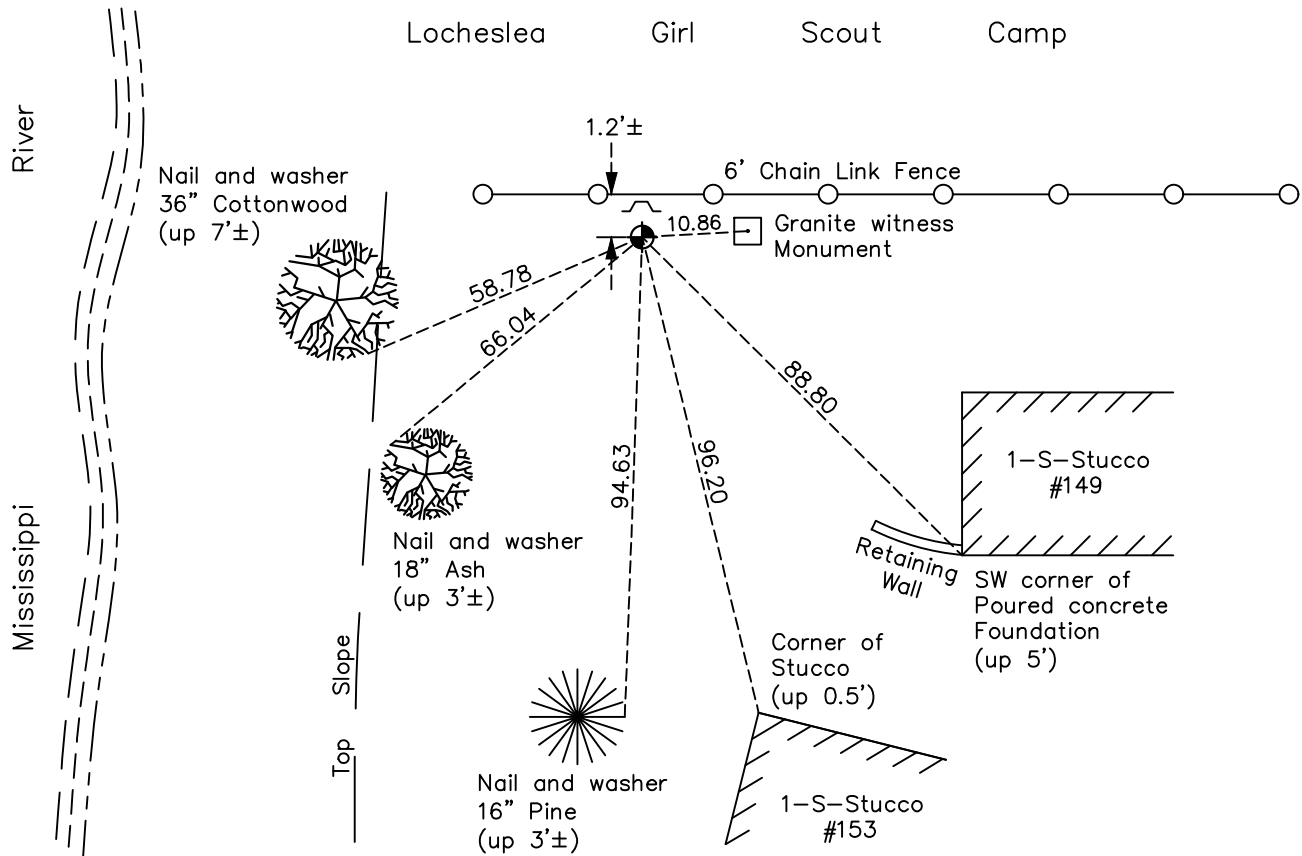
(on north line of section)

On the 18th day of May, 1961, the described corner was evidenced by a 4"X4"
concrete monument

and to perpetuate the location of said corner, at the exact location thereof, a permanent marker was placed consisting of a cast iron monument with a sign and post on the north side

AND on the 8th day of August, 2022, said permanent marker was found and the ties
were updated

Updated reference ties are as shown below.



Revision Date

12/22/22

N.A.D. 1983 Coordinates
(1996 Adjustment)

County Project Coordinates	
Northing	<u>121196.9758</u>
Easting	<u>497054.3364</u>
Date	<u>12/28/04</u>

I hereby certify that this United States public land survey monument record is correct and complete to the best of my knowledge and belief.

David Zieglmeier Date 12/11/23

David Zieglmeier Anoka County Surveyor
Minnesota License Number 46179

HISTORY OF GOVERNMENT CORNER

Page No. 32

County of Anoka

State of Minnesota

Meander Corner of Sec. 15 Township 30 Range 24 (on north line of section)

CORNER HISTORY:

March 30, 1943 - Harvey Cartwright found a 6" x 6" granite monument up 3" with a 4" x 4" Judicial Landmark up 6" to the West. Updated ties to granite monument.

May 18, 1961 - Found 4" x 4" concrete Judicial Landmark monument up 1'± with a 6" x 6" granite monument flush to the East. Updated ties to concrete Judicial Landmark monument.

July 28, 1964 - Found concrete JLM and updated ties.

July 6, 1966 - Found concrete JLM and updated ties.

August 17, 1970 - Found concrete JLM and updated ties.

June 25, 1974 - Found concrete JLM and updated ties.

August 1, 1977 - Found concrete JLM and updated ties.

August 2, 1977 - Concrete JLM gone. Corner ties don't check out.

September 12, 1980 - Found concrete JLM removed. Set cast iron monument using corner ties. Updated ties.

July 1, 1986 - Found cast iron monument and updated ties.

July 14, 1989 - Found cast iron monument and updated ties..

August 2, 1994 - Found cast iron monument and updated ties.

December 28, 2004 - Established NAD 1983 (1996 adj.) Anoka County project coordinates by static GPS methods.

September 3, 2008 - Found cast iron monument and updated ties.

November 6, 2014 - Found cast iron monument and updated ties.

December 2, 2019 - Found cast iron monument. Verified position by VRS GPS methods. Updated ties.

August 8, 2022 - Found cast iron monument. Verified position by VRS GPS methods. Updated ties.