

# CERTIFICATE OF LOCATION OF GOVERNMENT CORNER

County of Anoka

State of Minnesota

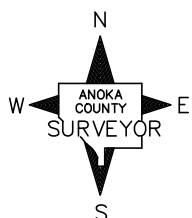
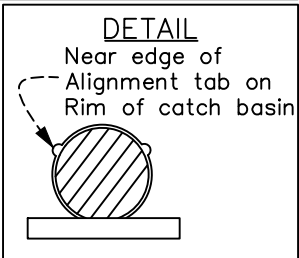
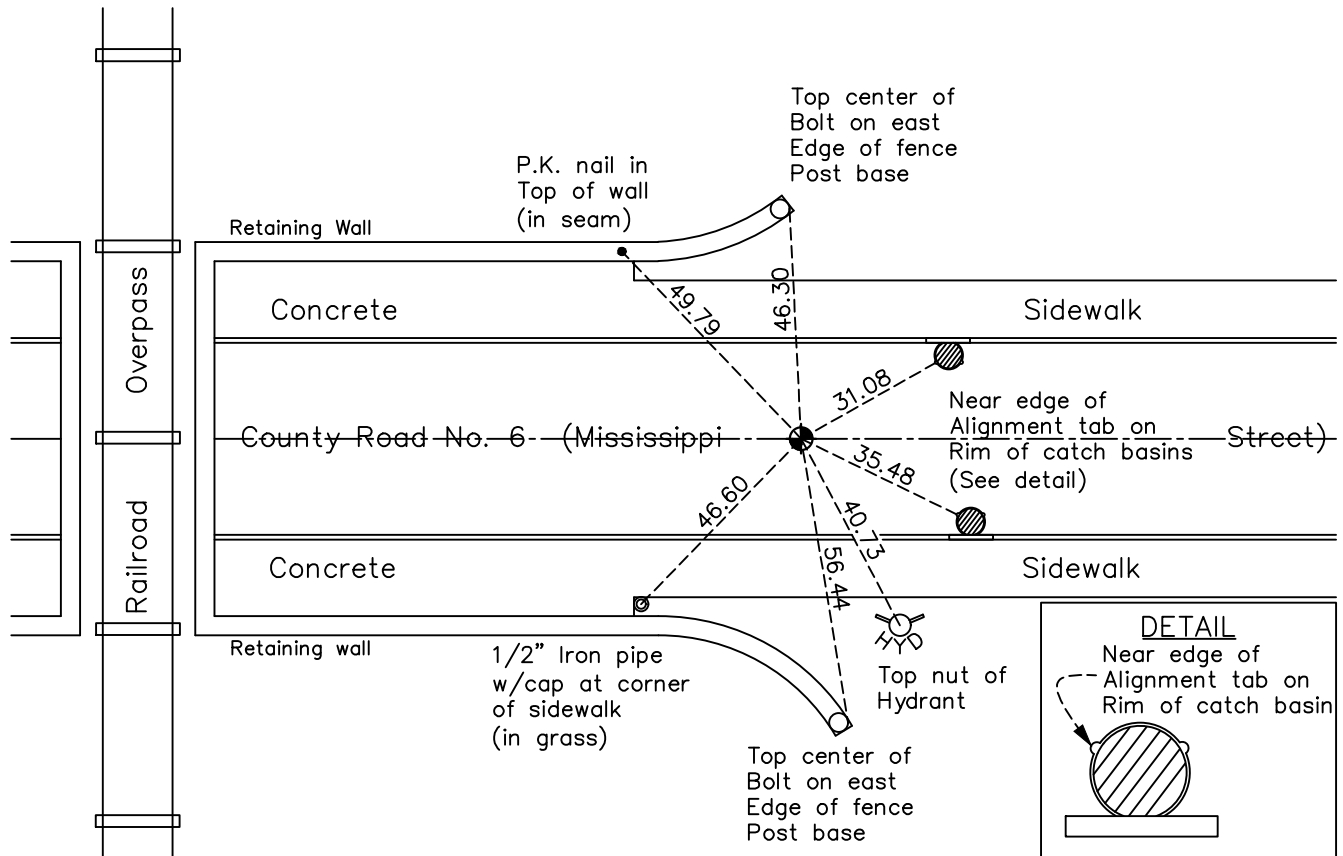
## West 1/4 Corner of Sec. 14 Township 30 Range 24

On the 11th day of August, 1976, the described corner was evidenced by a concrete monument

and to perpetuate the location of said corner, at the exact location thereof, a permanent marker was placed consisting of a cast iron monument

AND on the 5th day of August, 2022, said permanent marker was found flush and the ties were updated

Updated reference ties are as shown below.



Revision Date  
 12/22/22

N.A.D. 1983 Coordinates  
 (1996 Adjustment)

County Project Coordinates	
Northing	118559.8044
Easting	499554.9455
Date	7/22/03

I hereby certify that this United States public land survey monument record is correct and complete to the best of my knowledge and belief.

*David Zieglmeier* Date 12/11/23

David Zieglmeier Anoka County Surveyor  
 Minnesota License Number 46179

# HISTORY OF GOVERNMENT CORNER

Page No. 33

County of Anoka

State of Minnesota

## West 1/4 Corner of Sec. 14 Township 30 Range 24

### **CORNER HISTORY:**

July 1940 - Egan Field & Nowak found a concrete monument and updated the ties.

March 30, 1943 - Harvey Cartwright found a concrete monument down 4" and updated the ties.

August 19, 1960 - Found concrete monument down 0.6' with an iron on the North side. Found iron pipe on top of concrete monument flush with road pavement. Updated ties.

September 19, 1961 - Found concrete monument down 0.6' with an iron on the North side. Found iron pipe on top of concrete monument flush with road pavement. Updated ties.

July 29, 1964 - Found concrete monument down 0.6' with an iron on the North side. Found iron pipe on top of concrete monument flush with road pavement. Updated ties.

July 5, 1966 - Found concrete monument down 0.6' with an iron on the North side. Found spike in blacktop road. Updated ties.

June 28, 1973 - Found concrete monument down 0.6' with an iron on the North side. Found spike in blacktop road. Updated ties.

March 26, 1975 - Found concrete monument down 0.6' with an iron on the North side, all under blacktop road. Updated ties.

May 6, 1975 - Found concrete monument and set construction ties prior to construction.

August 11, 1976 - Set cast iron monument using construction ties. Updated ties.

August 1, 1977 - Found cast iron monument and updated ties.

July 16, 1980 - Found cast iron monument and updated ties.

July 1, 1986 - Found cast iron monument and updated ties.

July 19, 1989 - Found cast iron monument down. Raised flush and updated ties.

July 28, 1994 - Found cast iron monument and updated ties.

July 22, 2003 - Established NAD 1983 (1996 adj.) Anoka County project coordinates by static GPS methods.

September 3, 2008 - Found cast iron monument and updated ties.

October 30, 2014 - Found cast iron monument and updated ties.

December 3, 2019 - Found cast iron monument. Verified position by VRS GPS methods. Updated ties.

August 5, 2022 - Found cast iron monument flush. Verified position by VRS GPS methods. Updated ties.