

# CERTIFICATE OF LOCATION OF GOVERNMENT CORNER

County of Anoka

State of Minnesota

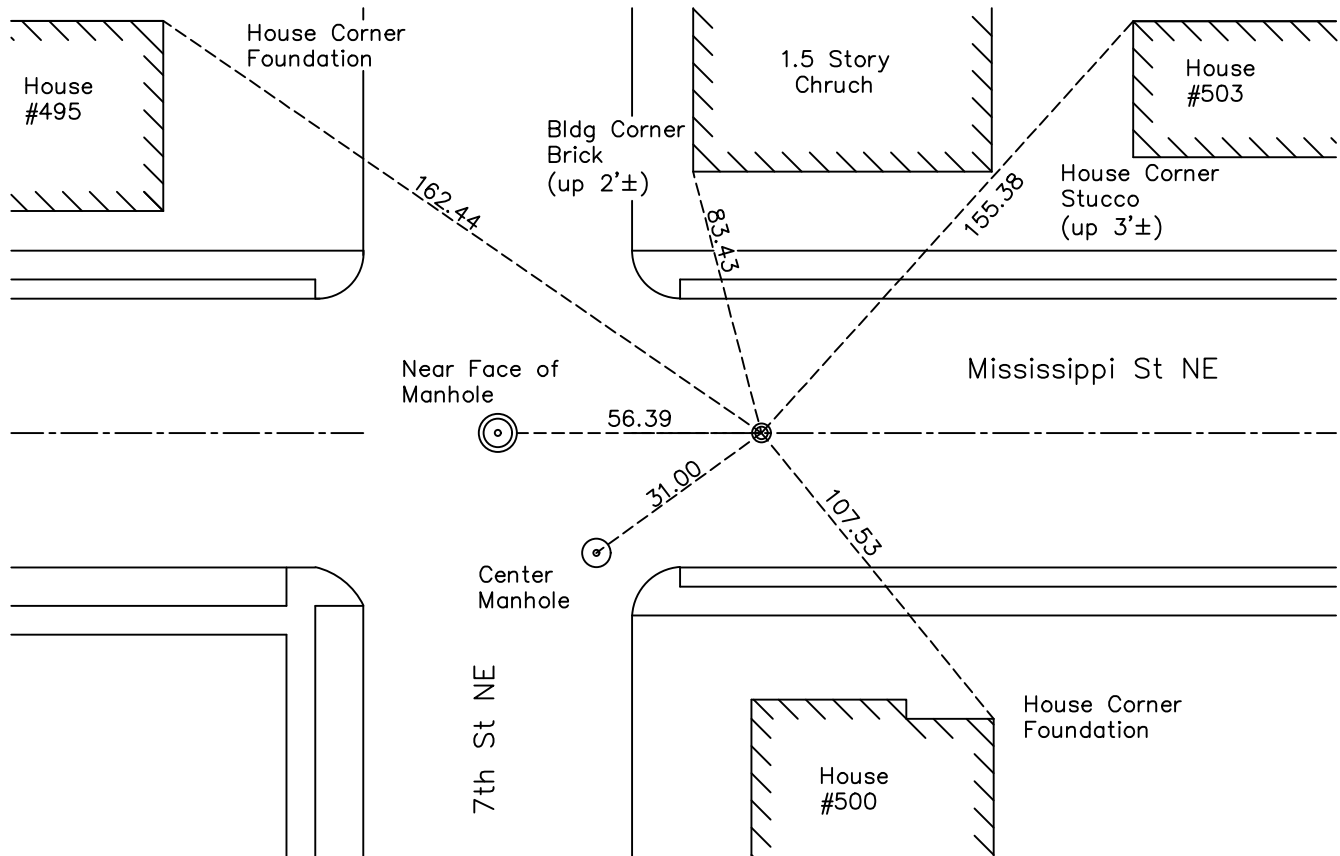
## Center Corner of Sec. 14 Township 30 Range 24

On the 6th day of May, 1966, the described corner was evidenced by 1/2" pinched  
iron pipe

and to perpetuate the location of said corner, at the exact location thereof, a permanent marker was placed consisting of P.K. Nail

AND on the 24th day of August, 2023, said permanent marker was reset with a 1/2" X 2'  
rebar with Aluminum cap and punchmark and the ties were re-established

Updated reference ties are as shown below.



Revision Date  
8/28/2023

N.A.D. 1983 Coordinates  
(2011 Adjustment)

County Project Coordinates	
Northing	118544.323
Easting	502200.939
Date	8/24/2023

I hereby certify that this United States public land survey monument record is correct and complete to the best of my knowledge and belief.

*David Zieglermeier* Date 12/11/23

David M. Zieglermeier, Anoka County Surveyor  
Minnesota License Number 46179

# HISTORY OF GOVERNMENT CORNER

County of Anoka

State of Minnesota

Center Corner of Sec. 14 Township 30 Range 24

## **CORNER HISTORY:**

May 6, 1966 - Found 1/2" pinched iron pipe down 0.1"± to be removed for construction

August 19, 1968 - P.K. noted in place

August 18, 1970 - Found P.K. nail and the ties were updated

June 24, 1974 - Found P.K. nail and the ties were updated

August 1, 1977 - Found P.K. nail and the ties were updated

July 27, 1978 - Found P.K. nail and the ties were updated

July 18, 1980 - Found P.K. nail and the ties were updated

November 6, 1990 - Found P.K. Nail and the ties were updated

August 24, 2023 - Center position was reset with a 1/2" X 2' rebar with Aluminum cap and punch mark set flush using RTK GPS method. Re-established ties to the Center monument.