

# CERTIFICATE OF LOCATION OF GOVERNMENT CORNER

County of Anoka

State of Minnesota

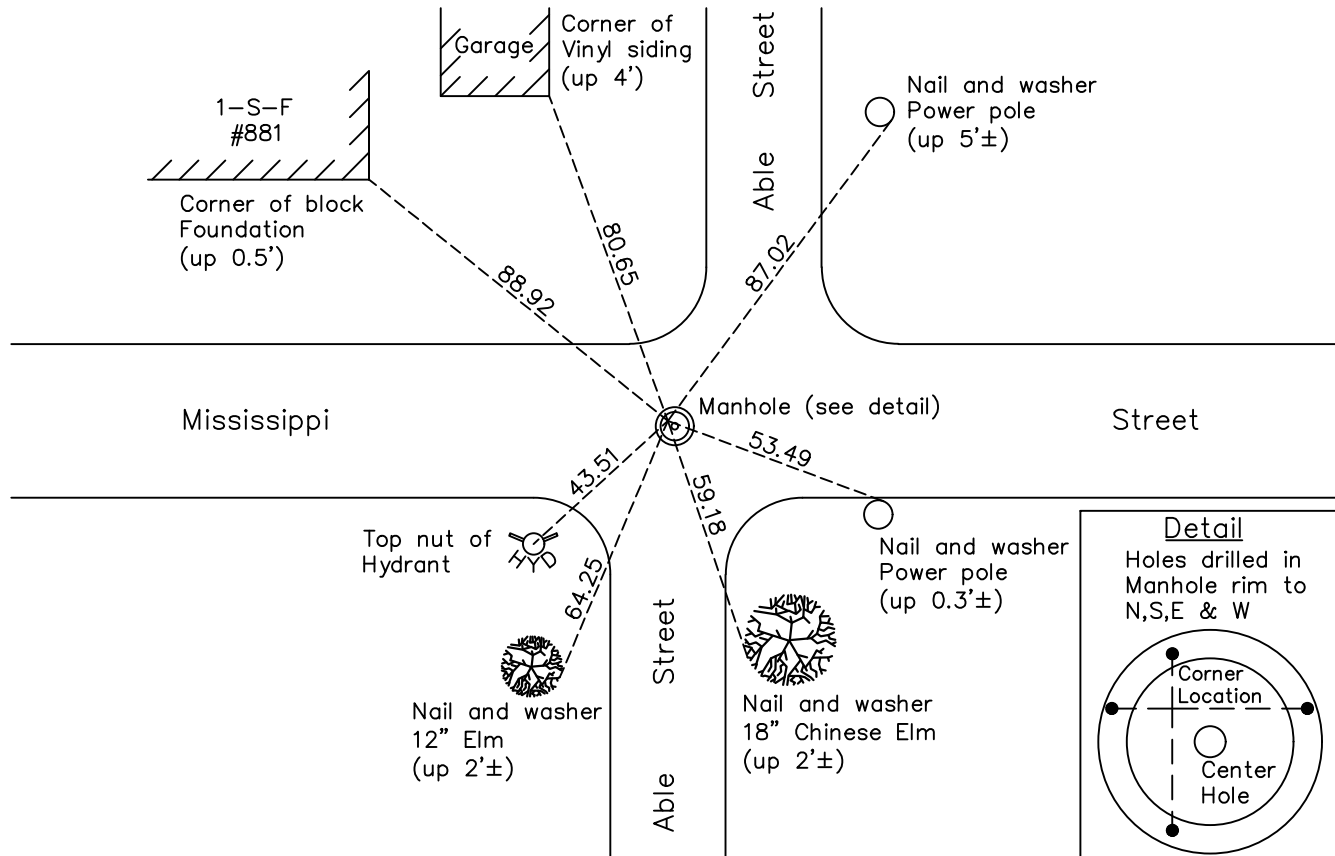
## East 1/4 Corner of Sec. 14 Township 30 Range 24

On the 4th day of September, 1943, the described corner was evidenced by a concrete monument

and to perpetuate the location of said corner, at the exact location thereof, a permanent marker was placed consisting of a position on a manhole cover with drill holes in rim of manhole to the North, South, East and West

AND on the 5th day of August, 2022, said permanent marker was found and the ties were updated

Updated reference ties are as shown below.



Revision Date  
12/22/22

N.A.D. 1983 Coordinates  
(1996 Adjustment)

County Project Coordinates	
Northing	<u>118529.0067</u>
Easting	<u>504818.6969</u>
Date	<u>7/15/04</u>

I hereby certify that this United States public land survey monument record is correct and complete to the best of my knowledge and belief.

*David Zieglmeier* Date 12/11/23

David Zieglmeier Anoka County Surveyor  
Minnesota License Number 46179

# HISTORY OF GOVERNMENT CORNER

Page No. 35

County of Anoka

State of Minnesota

## East 1/4 Corner of Sec. 14 Township 30 Range 24

### **CORNER HISTORY:**

September 4, 1943 - Harvey Cartwright found a 1" x 3' iron down 6" with a solid iron in the center. Replaced with a concrete monument down 4" and updated the ties.

April 30, 1955 - W.J. Lundstrom found a concrete monument and updated the ties.

September 8, 1960 - Found corner position falls on top of manhole cover. Measurements taken to notches on outer edge of manhole rim to establish a corner location. Updated ties.

July 5, 1966 - Found corner location on manhole at intersection of notches in manhole rim. Updated ties.

October 19, 1966 - Found corner location on manhole cover after road construction. Updated measurements to notches in manhole rim. Updated ties.

August 18, 1970 - Found corner location on manhole at intersection of notches in manhole rim. Updated ties.

June 24, 1974 - Found corner location on manhole at intersection of notches in manhole rim. Updated ties.

August 1, 1977 - Found corner location on manhole at intersection of notches in manhole rim. Updated ties.

July 27, 1978 - Found corner location on manhole at intersection of notches in manhole rim. Updated ties.

September 25, 1978 - Found corner location on manhole at intersection of notches in manhole rim. Updated ties.

July 18, 1980 - Found corner location on manhole at intersection of notches in manhole rim. Updated ties.

July 1, 1986 - Found corner location on manhole at intersection of notches in manhole rim. Updated ties.

January 7, 1988 - Found corner location on manhole at intersection of notches in manhole rim. Updated ties.

July 19, 1989 - Found corner location on manhole at intersection of notches in manhole rim. Updated ties.

July 28, 1994 - Found corner location on manhole at intersection of notches in manhole rim. Updated ties.

July 15, 2004 - Set position on manhole cover using corner ties. Corner location is at the intersection of drill holes in the manhole rim to the North, South, East and West. Established NAD 1983 (1996 adj.) Anoka County project coordinates by static GPS methods.

September 4, 2008 - Found corner location on manhole at intersection of drill holes in manhole rim. Updated ties.

October 30, 2014 - Found corner location on manhole at intersection of drill holes in manhole rim. Updated ties.

December 3, 2019 - Found corner location on manhole at intersection of drill holes in manhole rim. Verified position by VRS GPS methods. Updated ties.

August 5, 2022 - Found corner location on manhole at intersection of drill holes in manhole rim. Verified position by VRS GPS methods. Updated ties.