

CERTIFICATE OF LOCATION OF GOVERNMENT CORNER

County of Anoka

State of Minnesota

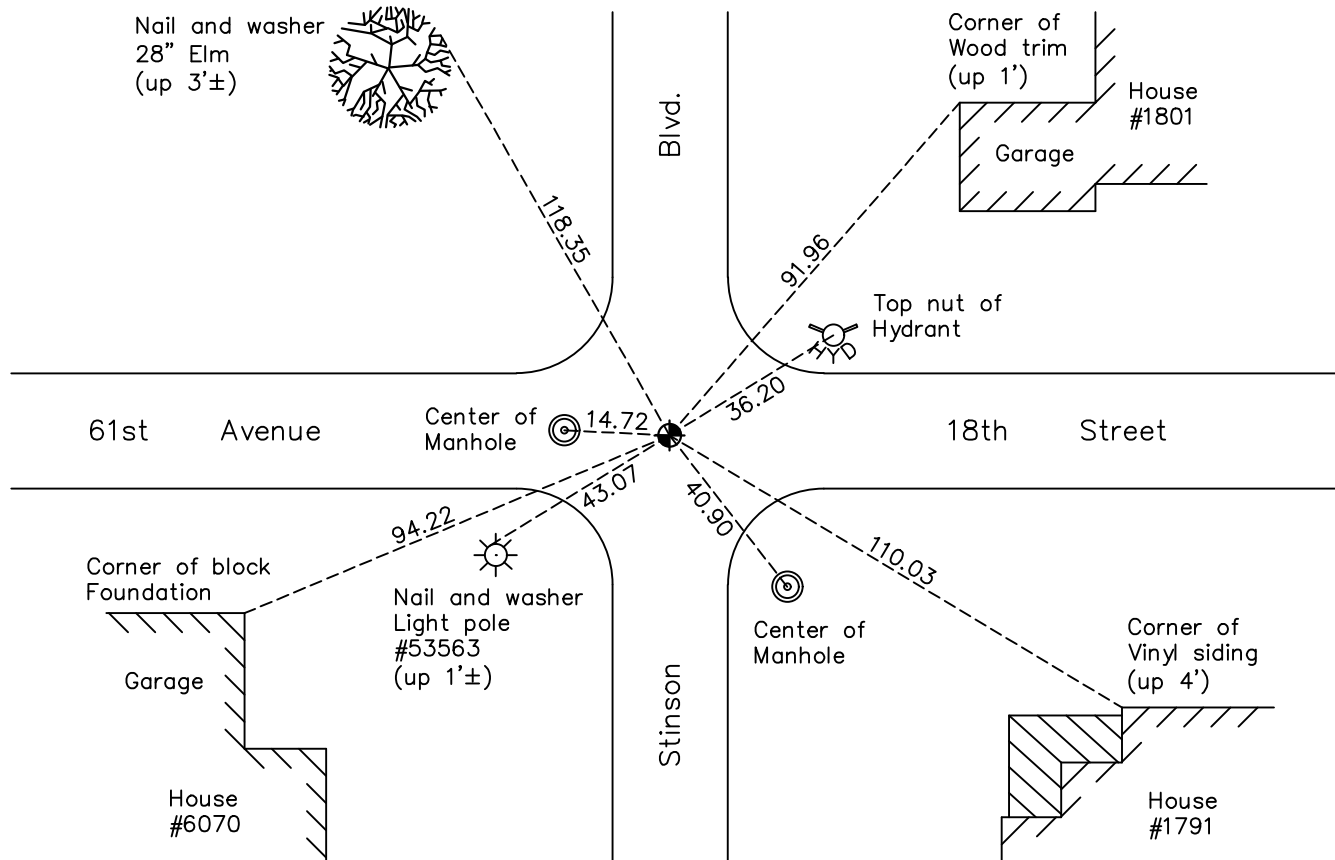
Northeast Corner of Sec. 24 Township 30 Range 24

On the 27th day of August, 1962, the described corner was evidenced by a granite monument

and to perpetuate the location of said corner, at the exact location thereof, a permanent marker was placed consisting of a cast iron monument

AND on the 16th day of August, 2022, said permanent marker was found to be a Ramsey County cast iron monument down 1.3'± in a covered tube and the ties were updated

Updated reference ties are as shown below.



Revision Date
12/22/22

N.A.D. 1983 Coordinates
(1996 Adjustment)

County Project Coordinates	
Northing	<u>115846.1810</u>
Easting	<u>510118.5742</u>
Date	<u>7/01/04</u>

I hereby certify that this United States public land survey monument record is correct and complete to the best of my knowledge and belief.

David Zieglmeier Date 12/11/23

David Zieglmeier Anoka County Surveyor
Minnesota License Number 46179

HISTORY OF GOVERNMENT CORNER

Page No. 38

County of Anoka

State of Minnesota

Northeast Corner of Sec. 24 Township 30 Range 24

CORNER HISTORY:

March 30, 1943 - Harvey Cartwright found a 8" x 8" granite monument flush and updated the ties.

September 9, 1960 - Found 8" x 8" granite monument with drill hole in center. Updated ties.

September 7, 1961 - Found granite monument on East edge of road. Checked ties.

August 27, 1962 - Found granite monument on East edge of road. Updated ties after sewer and water construction.

July 30, 1964 - Found granite monument and updated ties.

November 16, 1965 - Found granite monument and updated ties.

July 1, 1966 - Found granite monument and updated ties.

June 21, 1968 - Found 3/4" iron pipe in place and took additional corner ties.

August 27, 1968 - Found 3/4" iron pipe and updated ties.

August 18, 1970 - Found 1/2" iron pipe set by Milner, Carley & Associates down 0.4'±. Updated ties.

August 4, 1971 - Set cast iron monument flush using corner ties. Updated ties.

June 25, 1974 - Found cast iron monument and updated ties.

August 1, 1977 - Found cast iron monument and updated ties.

July 18, 1980 - Found cast iron monument and updated ties.

August 1, 1983 - Found cast iron monument and updated ties.

June 30, 1986 - Found cast iron monument and updated ties.

July 18, 1989 - Found cast iron monument and updated ties.

August 2, 1994 - Found cast iron monument and updated ties.

July 1, 2004 - Established NAD 1983 (1996 adj.) Anoka County project coordinates by static GPS methods.

September 5, 2007 - Found cast iron monument and updated ties.

October 29, 2014 - Found Ramsey County cast iron monument down 1'± in a covered tube. Updated ties.

December 3, 2019 - Found Ramsey County cast iron monument down 1'± in a covered tube. Verified position by VRS GPS methods. Updated ties.

August 16, 2022 - Found Ramsey County cast iron monument down 1.3'± in a covered tube. Verified position by VRS GPS methods. Updated ties.