

CERTIFICATE OF LOCATION OF GOVERNMENT CORNER

County of Anoka

State of Minnesota

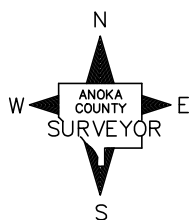
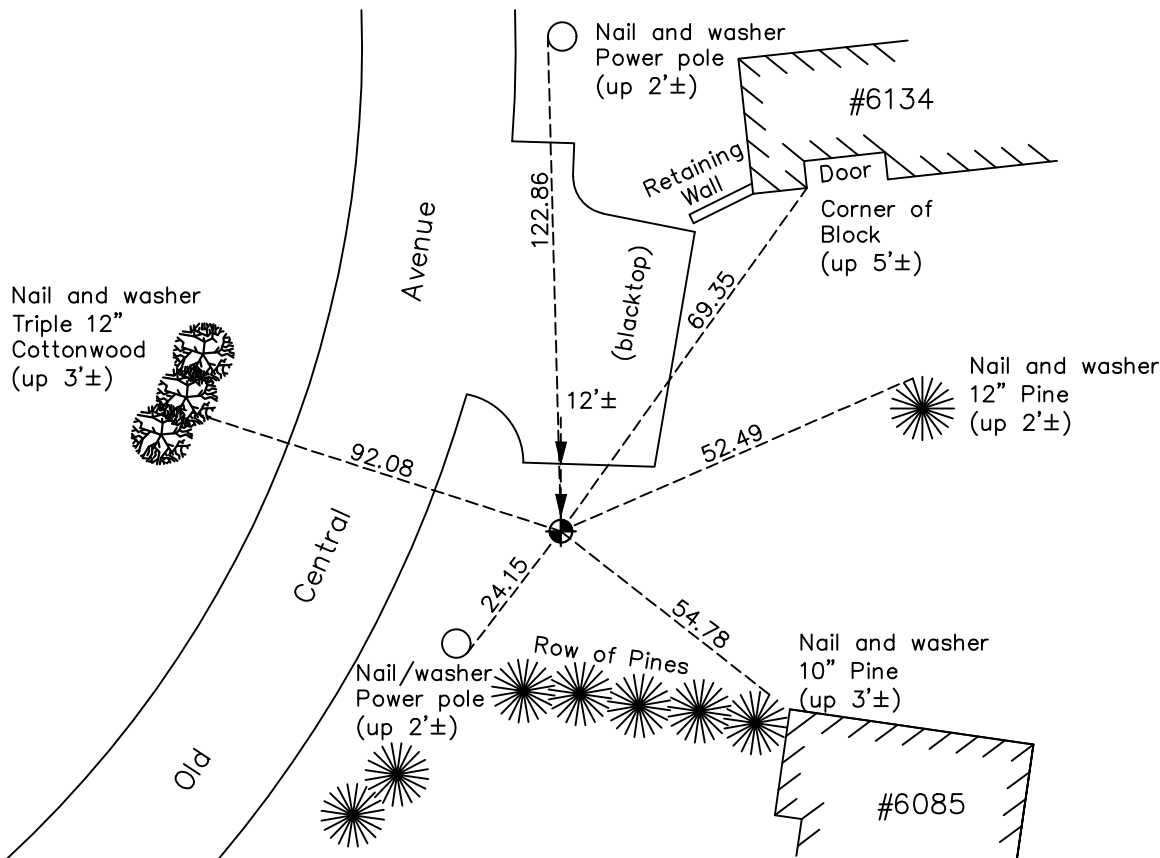
South 1/4 Corner of Sec. 13 Township 30 Range 24

On the 15th day of May, 1964, the described corner was evidenced by a concrete monument

and to perpetuate the location of said corner, at the exact location thereof, a permanent marker was placed consisting of a cast iron monument

AND on the 9th day of August, 2022, said permanent marker was found down 0.5'± and the ties were updated.

Updated reference ties are as shown below.



Revision Date
 12/22/22

N.A.D. 1983 Coordinates
(1996 Adjustment)

County Project Coordinates	
Northing	115859.9831
Easting	507494.9485
Date	1/05/05

I hereby certify that this United States public land survey monument record is correct and complete to the best of my knowledge and belief.

David Zieglmeier Date 12/11/23

David Zieglmeier Anoka County Surveyor
 Minnesota License Number 46179

HISTORY OF GOVERNMENT CORNER

Page No. 39

County of Anoka

State of Minnesota

South 1/4 Corner of Sec. 13 Township 30 Range 24

CORNER HISTORY:

September 1932 - Egan, Field & Nowak found an iron and updated the ties.

August 21, 1943 - Harvey Cartwright found a 2" x 2' iron flush and replaced with a concrete monument flush. Updated ties to concrete monument.

September 1956 - Found concrete monument and updated ties by N.S.P.

March 15, 1964 - Set cast iron monument down 0.1' on top of buried concrete monument using corner ties. Updated ties.

July 1, 1966 - Found cast iron monument and updated ties.

August 18, 1970 - Found cast iron monument flush and updated ties.

June 25, 1974 - Found cast iron monument and updated ties.

August 1, 1977 - Found cast iron monument and updated ties.

July 18, 1980 - Found cast iron monument and updated ties.

July 21, 1989 - Found cast iron monument and updated ties.

July 28, 1994 - Found cast iron monument and updated ties.

November 25, 1998 - Found cast iron monument and updated ties.

April 3, 2001 - Found cast iron monument. Verified position by GPS methods and updated ties.

January 1, 2005 - Established NAD 1983 (1996 adj.) Anoka County project coordinates by static GPS methods.

September 5, 2008 - Found broken off cast iron monument down 1'. Updated ties to center fin.

October 31, 2014 - Found broken off cast iron monument. Checked position by VRS GPS methods and corner ties to center fin.

March 31, 2015 - Set cast iron monument down 0.5'± using static GPS methods. Verified position by VRS GPS methods. Updated ties.

December 3, 2019 - Found cast iron monument down 0.5'±. Verified position by VRS GPS methods. Updated ties.

August 9, 2022 - Found cast iron monument down 0.5'±. Verified position by VRS GPS methods. Updated ties.