

CERTIFICATE OF LOCATION OF GOVERNMENT CORNER

County of Anoka

State of Minnesota

Meander Corner of Sec. 13 Township 30 Range 24

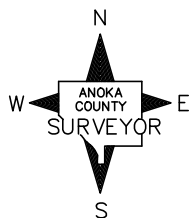
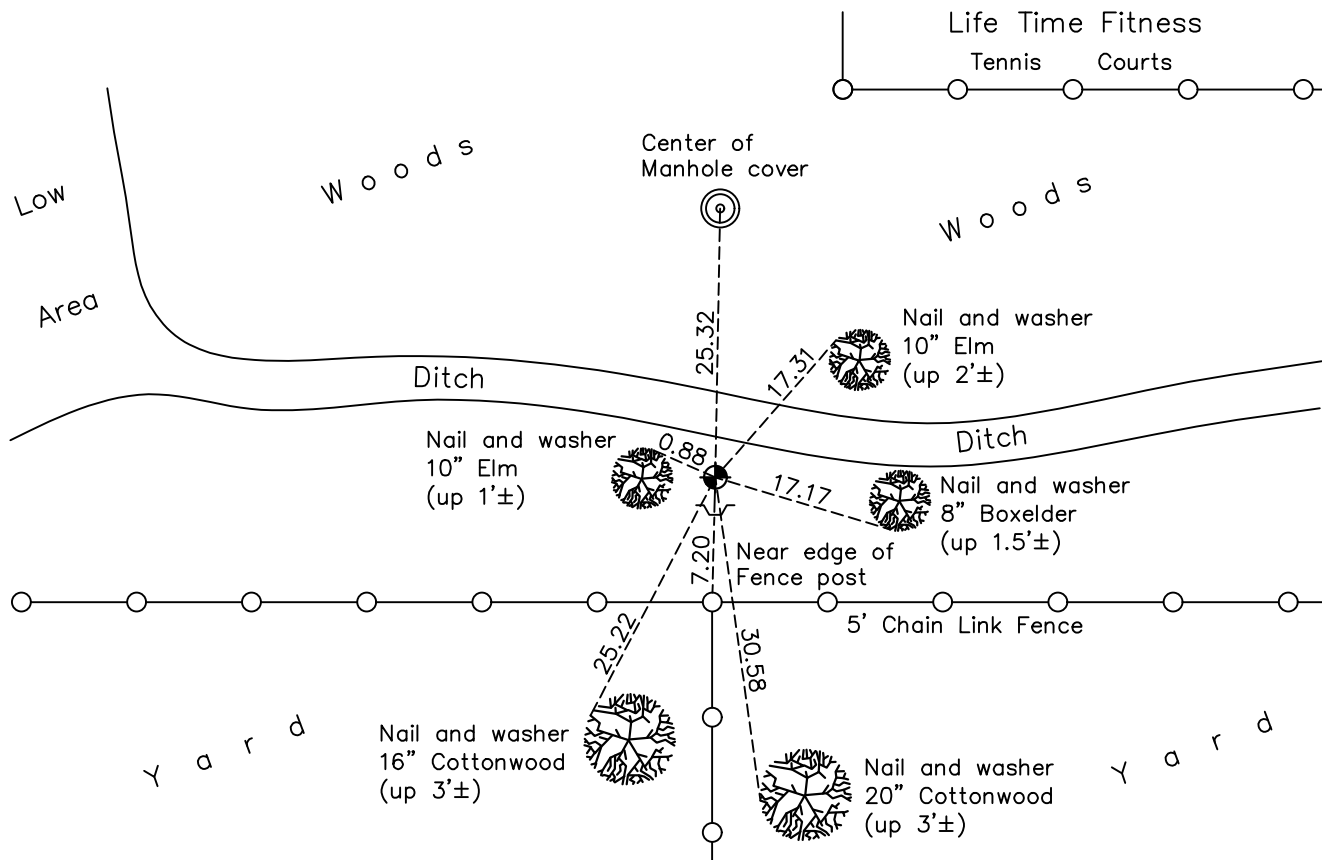
(on south line of section)

On the 4th day of January, 1963, the described corner was evidenced by a 3/4" iron pipe

and to perpetuate the location of said corner, at the exact location thereof, a permanent marker was placed consisting of a cast iron monument with a sign and post on the south side

AND on the 15th day of August, 2022, said permanent marker was found down 0.8'± and the ties were updated

Updated reference ties are as shown below.



Revision Date
 12/22/22

N.A.D. 1983 Coordinates
 (1996 Adjustment)

County Project Coordinates	
Northing	115864.0476
Easting	506772.7195
Date	12/16/04

I hereby certify that this United States public land survey monument record is correct and complete to the best of my knowledge and belief.

David Zieglmeier Date 12/11/23

David Zieglmeier Anoka County Surveyor
 Minnesota License Number 46179

HISTORY OF GOVERNMENT CORNER

Page No. 40

County of Anoka

State of Minnesota

Meander Corner of Sec. 13 Township 30 Range 24 (on south line of section)

CORNER HISTORY:

February 10, 1944 - Harvey Cartwright found an old iron on a very old fence line using old surveyors notes. Replaced with a concrete monument and updated the ties.

February 10, 1947 - Hoium found the monument and updated the ties.

Jan 4, 1963 - Found 3/4" iron pipe using Cartwright ties. Concrete monument gone due to sewer construction. Updated ties to iron pipe.

July 6, 1966 - Found 3/4" iron pipe and updated ties.

August 20, 1970 - Found 3/4" iron pipe down 0.1'± and replaced with a cast iron monument flush. Updated ties.

June 26, 1974 - Found cast iron monument and updated ties.

August 1, 1977 - Found cast iron monument and updated ties.

July 24, 1980 - Found cast iron monument and updated ties.

November 18, 1981 - Found cast iron monument. Added additional ties and updated ties prior to construction.

September 17, 1982 - Set cast iron monument using construction ties after construction. Updated ties.

August 4, 1989 - Found cast iron monument and updated ties.

August 3, 1994 - Found cast iron monument and updated ties.

December 8, 1998 - Found cast iron monument and updated ties.

December 16, 2004 - Established NAD 1983 (1996 adj.) Anoka County project coordinates by static GPS methods.

September 5, 2008 - Found cast iron monument and updated ties.

October 31, 2014 - Found cast iron monument down 0.5'± and updated ties.

December 6, 2019 - Found cast iron monument down 0.5'± and updated ties.

August 15, 2022 - Found cast iron monument down 0.8'± and updated ties.