

# CERTIFICATE OF LOCATION OF GOVERNMENT CORNER

County of Anoka

State of Minnesota

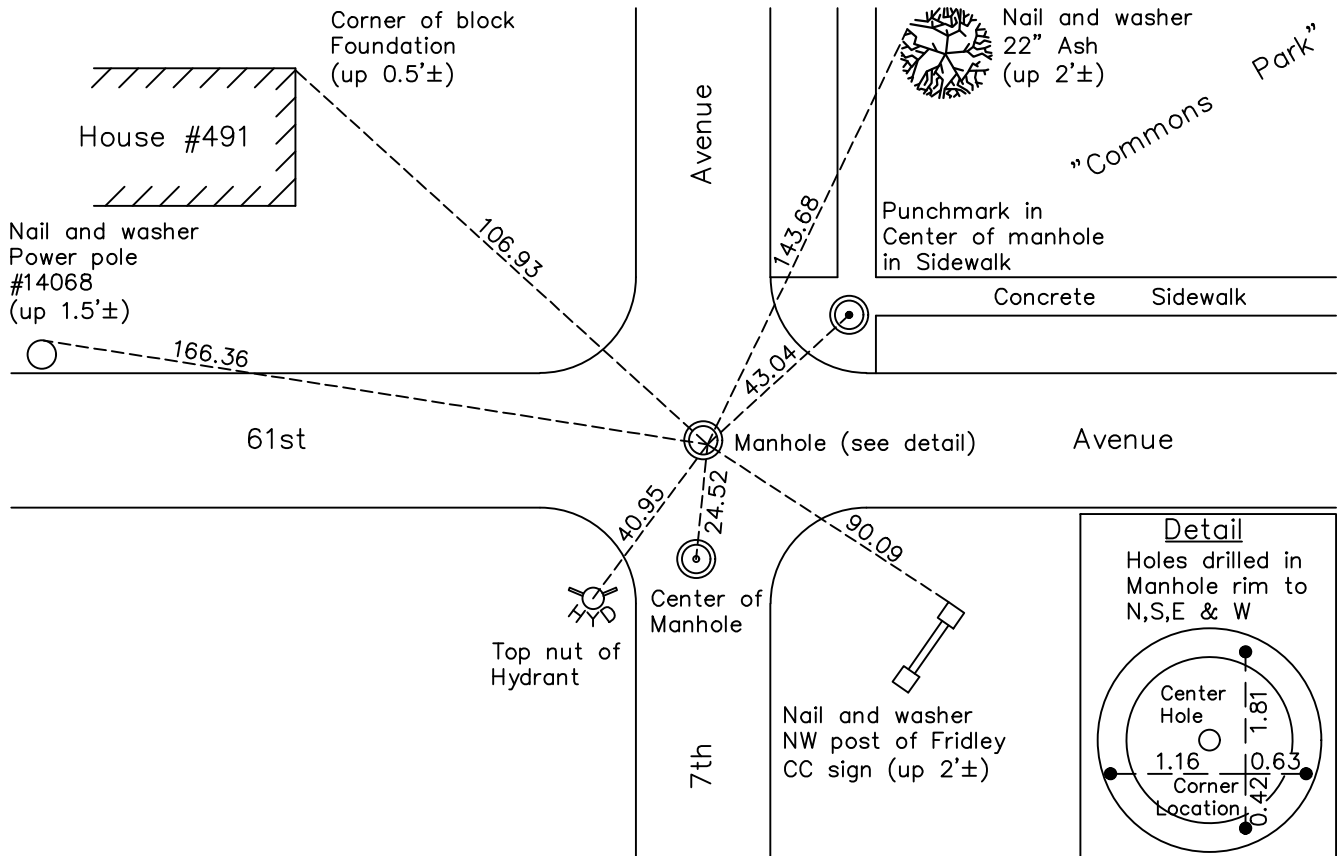
## South 1/4 Corner of Sec. 14 Township 30 Range 24

On the 23rd day of June, 1943, the described corner was evidenced by a concrete monument

and to perpetuate the location of said corner, at the exact location thereof, a permanent marker was placed consisting of a position on a manhole cover with holes drilled in rim of manhole to the North, South, East and West

AND on the 9th day of August, 2022, said permanent marker was found and the ties were updated

Updated reference ties are as shown below.



Revision Date  
12/22/22

N.A.D. 1983 Coordinates  
 (1996 Adjustment)

County Project Coordinates	
Northing	<u>115911.3381</u>
Easting	<u>502219.7157</u>
Date	<u>7/21/04</u>

I hereby certify that this United States public land survey monument record is correct and complete to the best of my knowledge and belief.

*David Zieglmeier* Date 12/11/23

David Zieglmeier Anoka County Surveyor  
 Minnesota License Number 46179

# HISTORY OF GOVERNMENT CORNER

Page No. 43

County of Anoka

State of Minnesota

## South 1/4 Corner of Sec. 14 Township 30 Range 24

### **CORNER HISTORY:**

June 23, 1943 - Harvey Cartwright found an old B.T. at intersection of North, East & West fence lines. Replaced with a concrete monument and updated the ties.

April 25, 1955 - W.J. Lundstrom re-established corner location on manhole cover after sewer construction. Location is at the intersection of v-grooves cut into the manhole rim to the North, South, East & West. Updated ties.

September 16, 1960 - Found corner location on manhole cover and updated ties.

August 6, 1964 - Found corner location on manhole cover and updated ties.

November 5, 1965 - Found corner location on manhole cover and set P.K. nails 2 feet North, South, East & West of location. Notches cut into manhole rim found to be inaccurate. Updated ties.

July 1, 1966 - Found corner location on manhole cover and updated ties.

August 18, 1970 - Found corner location on manhole cover and updated ties.

June 25, 1974 - Found corner location on manhole cover and updated ties.

August 2, 1977 - Found corner location on manhole cover and updated ties.

July 18, 1980 - Found corner location on manhole cover and updated ties.

January 19, 1999 - Found corner location on manhole cover using notches on manhole rim. Updated ties.

July 21, 2004 - Established NAD 1983 (1996 adj.) Anoka County project coordinates by static GPS methods.

September 5, 2008 - Found manhole to be moved. Found corner location on cover and set drill holes in manhole rim to the North, South, East & West of location. Updated ties.

October 28, 2014 - Found corner location on manhole cover. Verified position by VRS GPS methods. Updated ties.

December 6, 2019 - Found corner location on manhole cover. Verified position by VRS GPS methods. Updated ties.

August 9, 2022 - Found corner location on manhole cover. Verified position by VRS GPS methods. Updated ties.