

CERTIFICATE OF LOCATION OF GOVERNMENT CORNER

County of Anoka

State of Minnesota

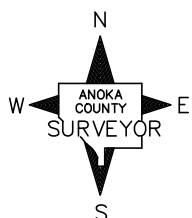
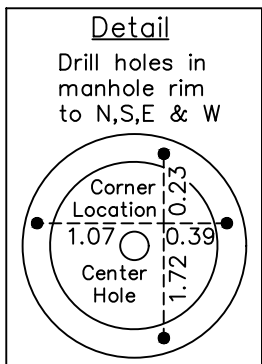
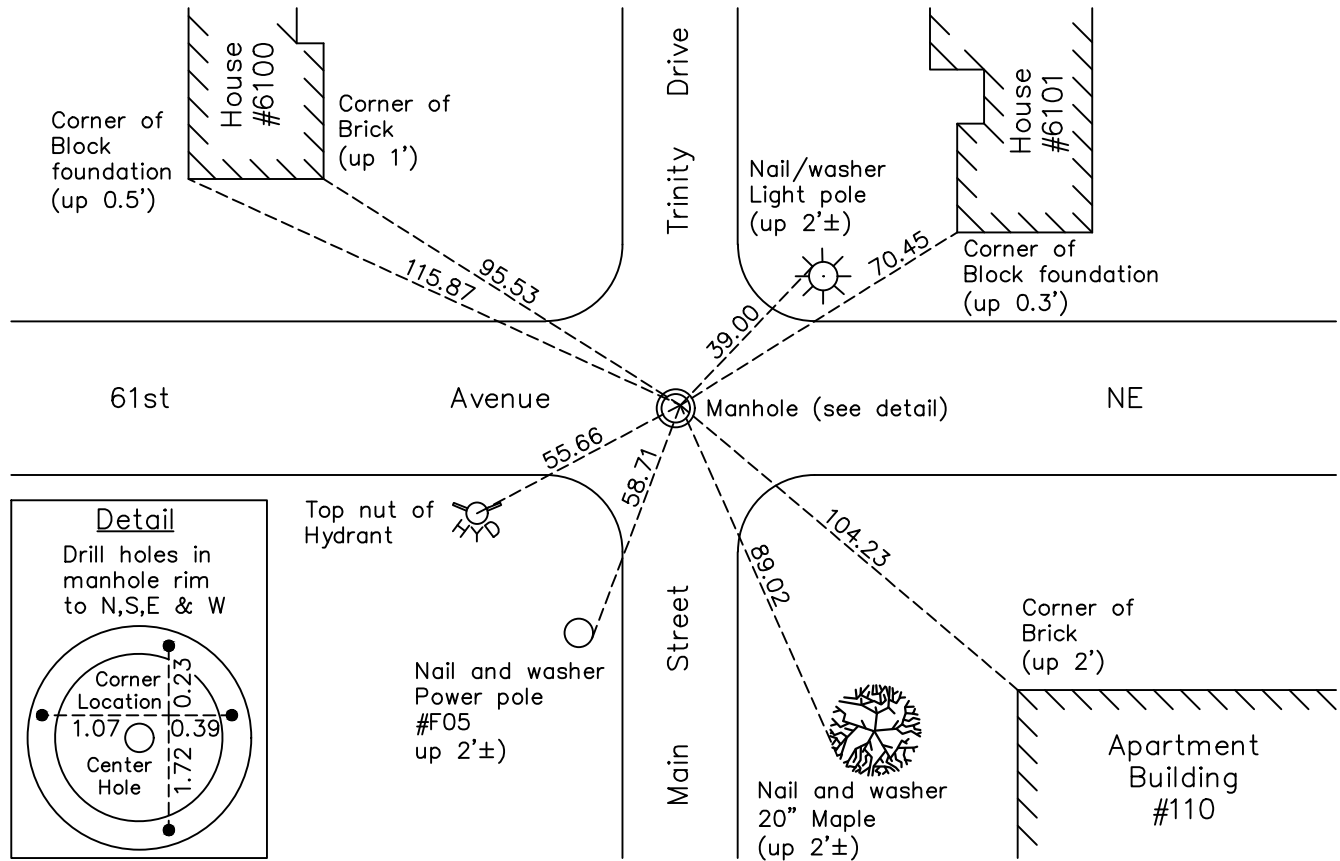
Northwest Corner of Sec. 23 Township 30 Range 24

On the 16th day of June, 1943, the described corner was evidenced by a concrete monument

and to perpetuate the location of said corner, at the exact location thereof, a permanent marker was placed consisting of a position on a manhole cover with notches in rim of manhole to the North, South, East and West

AND on the 8th day of August, 2022, said permanent marker was found with drill holes in in rim of manhole to North, South, East and West. P.K. nails set 1.00' North and East of position.

Updated reference ties are as shown below.



Revision Date
12/22/22

N.A.D. 1983 Coordinates
(1996 Adjustment)

County Project Coordinates	
Northing	<u>115930.5522</u>
Easting	<u>499550.5192</u>
Date	<u>7/15/04</u>

I hereby certify that this United States public land survey monument record is correct and complete to the best of my knowledge and belief.
David Zieglmeier Date 12/11/23
David Zieglmeier Anoka County Surveyor
Minnesota License Number 46179

HISTORY OF GOVERNMENT CORNER

Page No. 44

County of Anoka

State of Minnesota

Northwest Corner of Sec. 23 Township 30 Range 24

CORNER HISTORY:

June 16, 1943 - Harvey Cartwright found an iron down 4" next to old rotted cedar hub. Position checks with distance from old Railroad Right of Way notes. Replaced with a concrete monument and updated the ties.

April 1955 - Minder Engineering found concrete monument missing. Corner location falls on a manhole cover. Placed 'V' grooves in manhole rim to the North, South, East and West of position. Updated ties.

September 8, 1960 - Found corner location on manhole cover and updated ties.

July 29, 1964 - Found corner location on manhole cover and updated ties.

July 1, 1966 - Found corner location on manhole cover and updated ties.

August 8, 1967 - Found corner location on manhole cover and updated ties.

August 12, 1970 - Found corner location on manhole cover and updated ties.

June 25, 1974 - Found corner location on manhole cover and updated ties.

August 2, 1977 - Found corner location on manhole cover and updated ties.

July 29, 1983 - Found corner location on manhole cover and updated ties.

July 1, 1986 - Found corner location on manhole cover and updated ties.

July 24, 1989 - Found corner location on manhole cover and updated ties.

July 26, 1994 - Found corner location on manhole cover and updated ties.

July 15, 2004 - Established NAD 1983 (1996 adj.) Anoka County project coordinates by static GPS methods.

September 5, 2008 - Found corner location on manhole cover and updated ties.

October 28, 2014 - Found notches in manhole rim missing and in need of reset.

March 23, 2015 - Set temporary punch mark on manhole cover with P.K. nails 1' North and East of position. Verified position by static GPS methods.

March 27, 2015 - Set drill holes in manhole rim to the North, South, East and West of position on manhole cover using static GPS methods. Intersection of drill holes is the corner location. Verified corner location by VRS GPS methods. Updated ties.

December 6, 2019 - Found corner location on manhole cover. Verified position by VRS GPS methods. Updated ties.

August 8, 2022 - Found corner location on manhole cover. Verified position by VRS GPS methods. Updated ties.