

CERTIFICATE OF LOCATION OF GOVERNMENT CORNER

County of Anoka

State of Minnesota

Meander Corner of Sec. 22 Township 30 Range 24

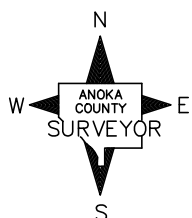
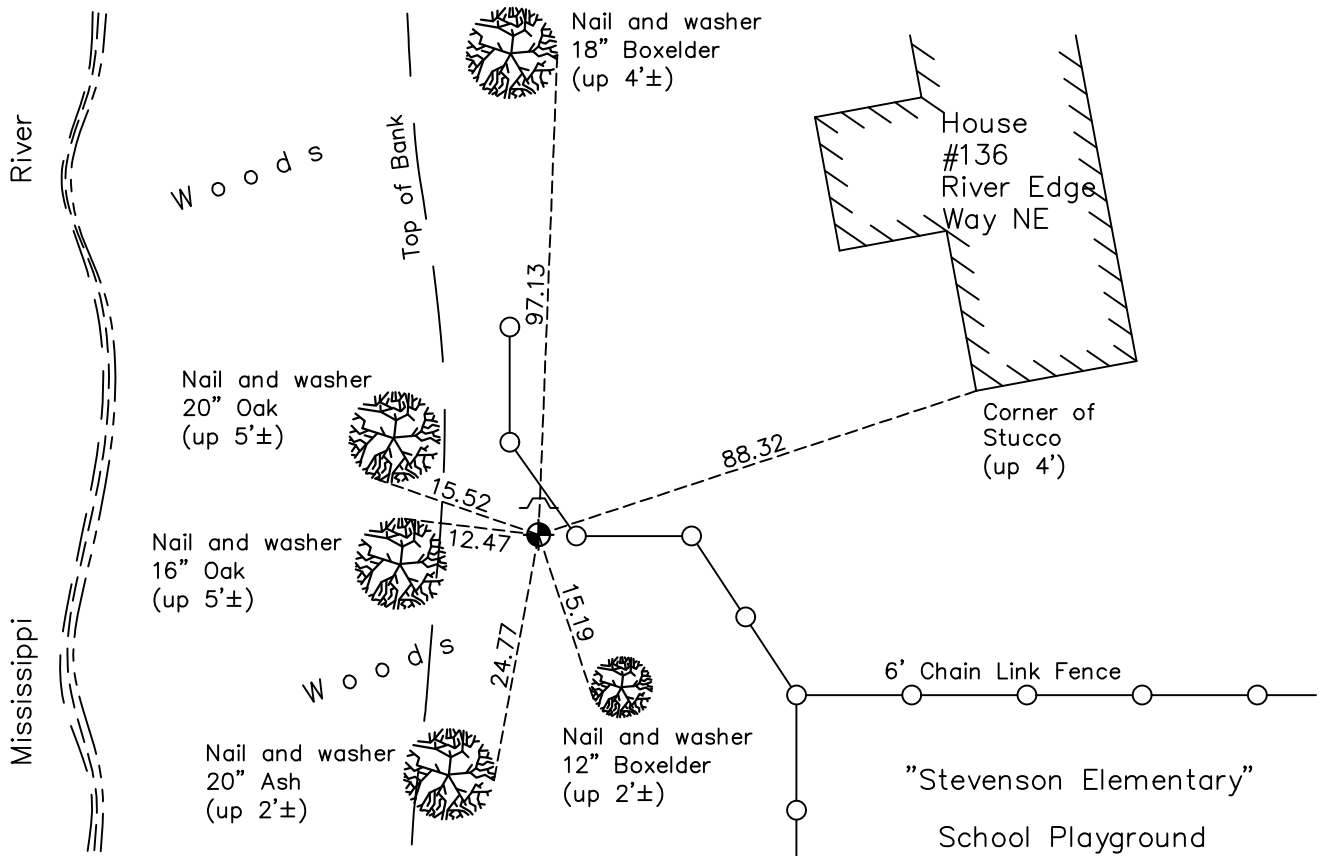
(Meander Corner No. 4)

On the 15th day of September, 1960, the described corner was evidenced by a concrete monument

and to perpetuate the location of said corner, at the exact location thereof, a permanent marker was placed consisting of a cast iron monument with a sign and post on the north side

AND on the 8th day of August, 2022, said permanent marker was found flush and the ties were updated

Updated reference ties are as shown below.



Revision Date
12/22/22

N.A.D. 1983 Coordinates
(1996 Adjustment)

County Project Coordinates	
Northing	<u>115918.7057</u>
Easting	<u>497370.4904</u>
Date	<u>12/29/04</u>

I hereby certify that this United States public land survey monument record is correct and complete to the best of my knowledge and belief.

David Zieglmeier Date 12/11/23

David Zieglmeier Anoka County Surveyor
Minnesota License Number 46179

HISTORY OF GOVERNMENT CORNER

Page No. 46

County of Anoka

State of Minnesota

Meander Corner of Sec. 22 Township 30 Range 24 (Meander Corner No. 4)

CORNER HISTORY:

July 12, 1943 - Harvey Cartwright set a concrete monument flush using a found iron 7.1' to the East and on line with an old fence line running East and West. Established ties to monument.

October 1955 - Caswell Engineering Co. found a concrete monument flush and updated the ties.

September 15, 1960 - Found concrete monument up 0.5' and updated ties.

July 29, 1964 - Found concrete monument and updated ties.

June 27, 1966 - Found concrete monument and updated ties.

August 19, 1970 - Found concrete monument and updated ties.

June 26, 1974 - Found concrete monument and replaced with a cast iron monument up 0.1'±. Updated ties.

August 2, 1977 - Found cast iron monument and updated ties.

July 21, 1980 - Found cast iron monument and updated ties.

July 1, 1986 - Found cast iron monument and updated ties.

July 17, 1989 - Found cast iron monument and updated ties.

August 26, 1994 - Found cast iron monument and updated ties.

December 29, 2004 - Established NAD 1983 (1996 adj.) Anoka County project coordinates by static GPS methods.

September 8, 2008 - Found cast iron monument and updated ties.

November 6, 2014 - Found cast iron monument and updated ties.

December 6, 2019 - Found cast iron monument and updated ties.

August 8, 2022 - Found cast iron monument flush. Verified position by VRS GPS methods. Updated ties.