

CERTIFICATE OF LOCATION OF GOVERNMENT CORNER

County of Anoka

State of Minnesota

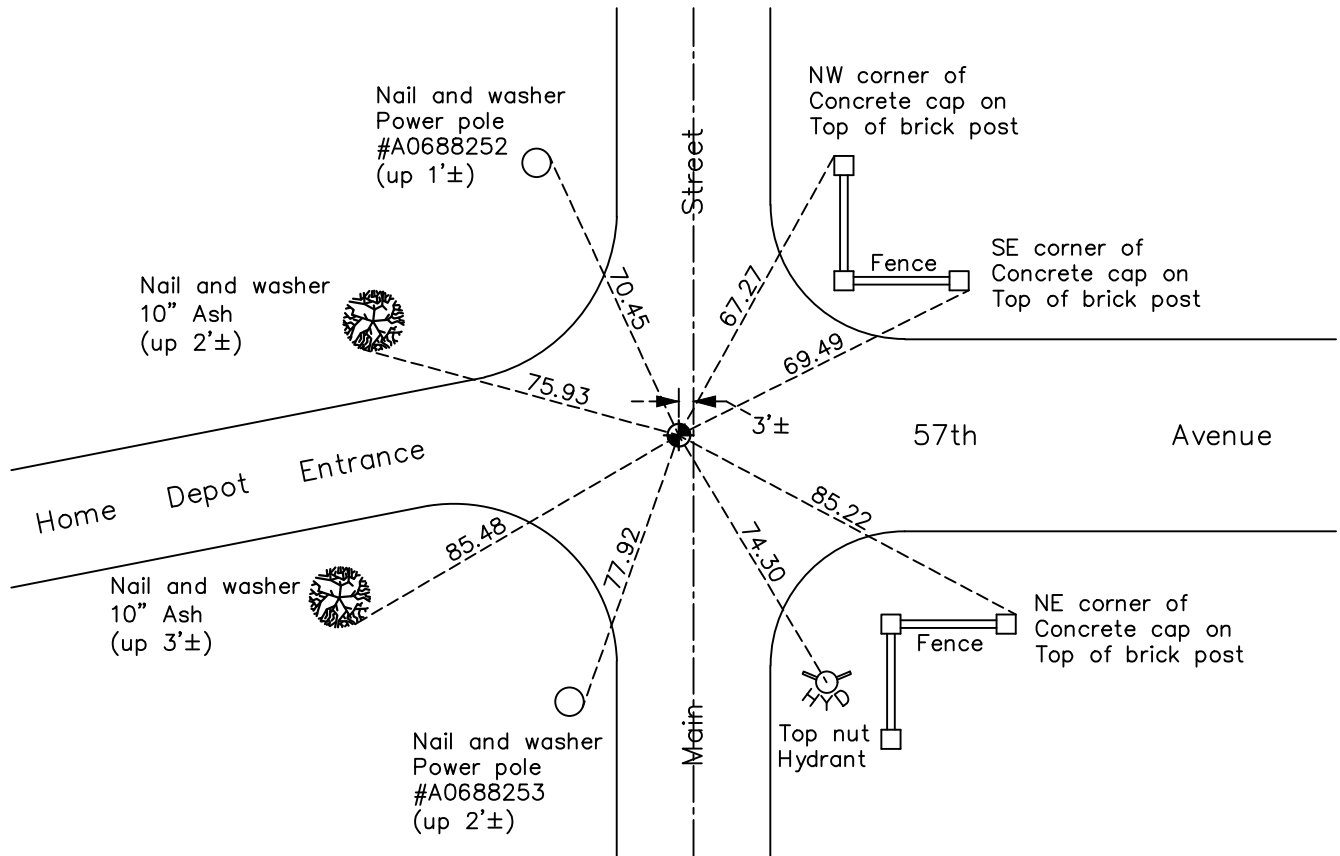
West 1/4 Corner of Sec. 23 Township 30 Range 24

On the 9th day of September, 1960, the described corner was evidenced by a concrete monument

and to perpetuate the location of said corner, at the exact location thereof, a permanent marker was placed consisting of a cast iron monument

AND on the 8th day of August, 2022, said permanent marker was Found flush and the ties were updated.

Updated reference ties are as shown below.



Revision Date
12/22/22

N.A.D. 1983 Coordinates
(1996 Adjustment)

County Project Coordinates	
Northing	<u>113245.9538</u>
Easting	<u>499603.4772</u>
Date	<u>7/19/04</u>

I hereby certify that this United States public land survey monument record is correct and complete to the best of my knowledge and belief.

David Zieglmeier Date 12/11/23

David Zieglmeier Anoka County Surveyor
Minnesota License Number 46179

HISTORY OF GOVERNMENT CORNER

Page No. 48

County of Anoka

State of Minnesota

West 1/4 Corner of Sec. 23 Township 30 Range 24

CORNER HISTORY:

June 23, 1943 - Harvey Cartwright found an iron stake down 1' and replaced with a concrete monument. Updated ties.

September 9, 1960 - Found concrete monument up 0.5' with an iron on the North side. Updated ties.

July 29, 1964 - Found cast iron monument flush with road on top of concrete monument. Updated ties.

June 29, 1966 - Found cast iron monument and took additional ties.

August 8, 1967 - Found cast iron monument and updated ties.

August 12, 1970 - Found cast iron monument and updated ties.

June 25, 1974 - Found cast iron monument and updated ties.

August 3, 1977 - Found cast iron monument and updated ties.

July 23, 1980 - Found cast iron monument down. Raised flush and updated ties.

June 30, 1986 - Found cast iron monument and updated ties.

July 17, 1989 - Found cast iron monument and updated ties.

July 26, 1994 - Found cast iron monument and updated ties.

August 5, 1997 - Reset new cast iron monument using corner ties. Updated ties.

November 25, 1998 - Found cast iron monument and updated ties.

July 19, 2004 - Established NAD 1983 (1996 adj.) Anoka County project coordinates by static GPS methods.

September 8, 2008 - Found cast iron monument and updated ties.

October 27, 2014 - Found cast iron monument. Verified position by VRS GPS methods. Updated ties.

June 12, 2019 - Updated construction ties and removed CIM prior to Road Construction

April 7, 2020 - Reset with a cast iron monument, set flush to surface, after road construction using static GPS methods and the ties were updated

August 8, 2022 - Found cast iron monument flush. Verified position by VRS GPS methods. Updated ties.