

# CERTIFICATE OF LOCATION OF GOVERNMENT CORNER

County of Anoka

State of Minnesota

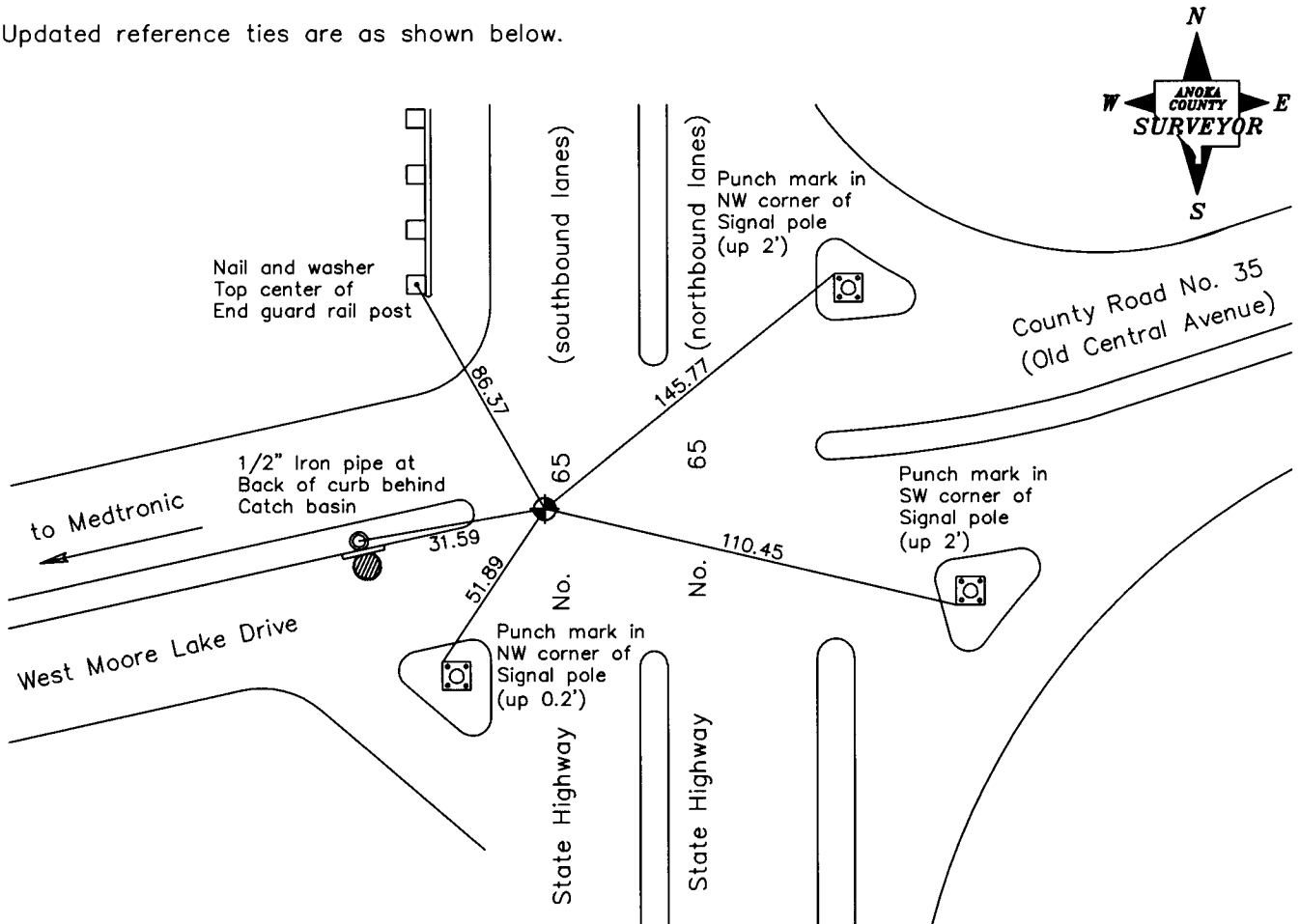
West 1/4 Corner of Sec. 24 Township 30 Range 24

On the 5th day of January, 1966, the described corner was evidenced by a position determined by area platting

and to perpetuate the location of said corner, at the exact location thereof, a permanent marker was placed consisting of a cast iron monument

AND on the 9th day of September, 2008, said permanent marker was found and the ties were updated

Updated reference ties are as shown below.



Revised date

1/21/99
6/21/00
9/09/08

N.A.D. 1983 Coordinates  
(1996 Adjustment)

County Project Coordinates	
Northing	<u>113280.7260</u>
Easting	<u>504949.0905</u>
Date	<u>6/08/04</u>

I hereby certify that this United States public land survey monument record is correct and complete to the best of my knowledge and belief.

*Larry D. Hoium* Date 11/07/08  
 \_\_\_\_\_, Anoka County Surveyor  
 Minnesota License Number 18165