

CERTIFICATE OF LOCATION OF GOVERNMENT CORNER

County of Anoka

State of Minnesota

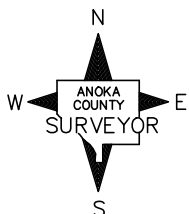
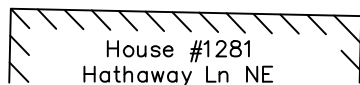
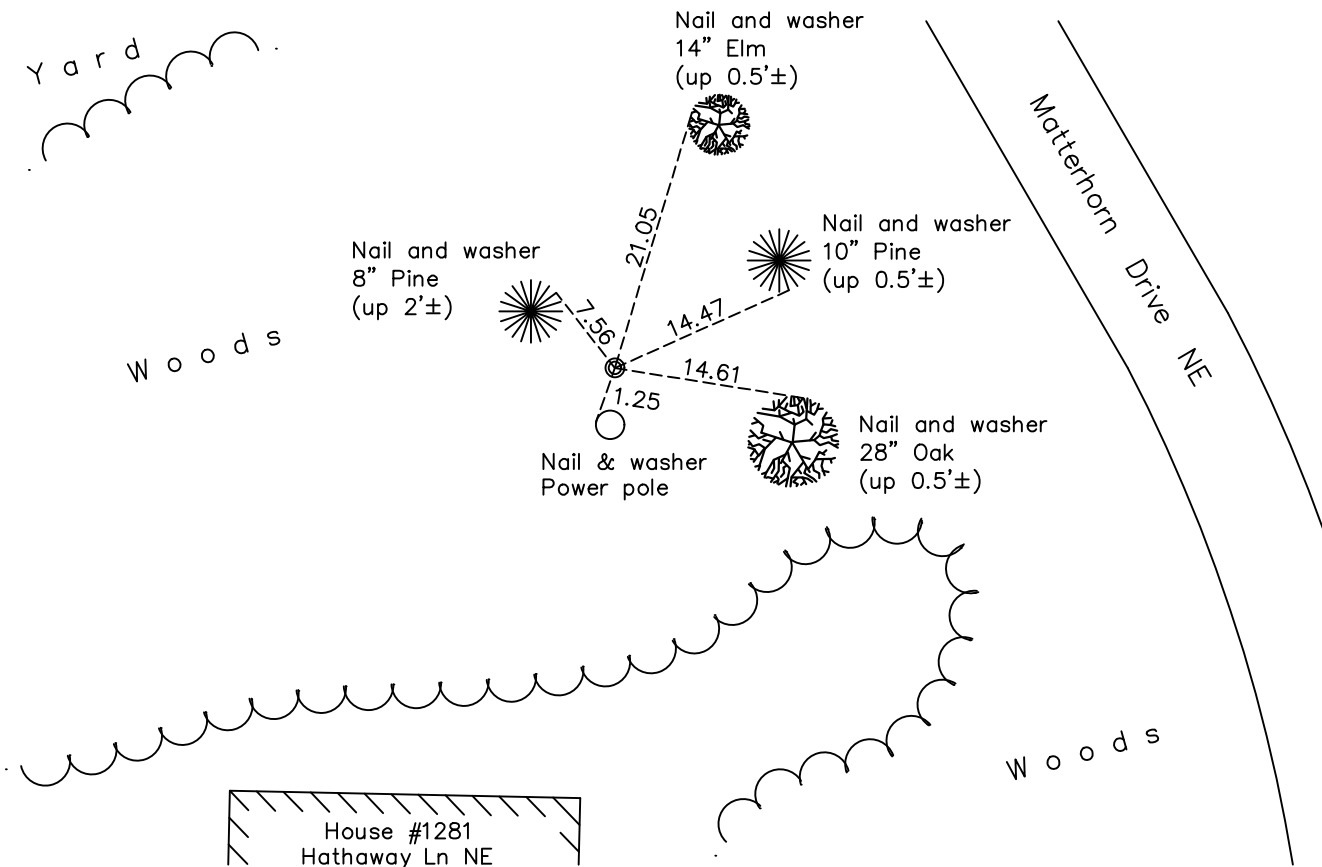
Center Corner of Sec. 24 Township 30 Range 24

On the 29 day of July, 1964, the described corner was evidenced by a 1/2" iron pipe

and to perpetuate the location of said corner, at the exact location thereof, a permanent marker was placed consisting of a 1/2" iron pipe

AND on the 16th day of May, 2022, said permanent marker was found down 0.1'± and verified position by VRS GPS methods. Updated ties.

Updated reference ties are as shown below.



N.A.D. 1983 Coordinates
(1996 Adjustment)

County Project Coordinates

Northing 113249.4022

Easting 507538.8489

Date 4/19/2021

Revision Date

5/19/2022

I hereby certify that this United States public land survey monument record is correct and complete to the best of my knowledge and belief.

David Zieglmeier Date 5/24/22

David M. Zieglmeier, Anoka County Surveyor

Minnesota License Number 46179

HISTORY OF GOVERNMENT CORNER

Page No. 50

County of Anoka

State of Minnesota

Center Corner of Sec. 24 Township 30 Range 24

CORNER HISTORY:

unknown date - C.E. Coulters found a iron pipe and updated ties.

May 1959 - Schoell and Madson found iron pipe using C.E. Coulters ties. Updated ties.

July 29, 1964 - Found 1/2" iron pipe down 0.2'± and updated ties.

July 1, 1966 - Found iron pipe and updated ties.

August 19, 1970 - Found iron pipe and updated ties.

June 26, 1974 - Found iron pipe and updated ties.

August 3, 1977 - Found iron pipe and updated ties.

July 23, 1980 - Found iron pipe and updated ties.

June 30, 1986 - Found iron pipe and updated ties.

July 25, 1989 - Found 1/2" iron pipe and updated ties.

April 19, 2021 - Established NAD 1983 (1996 adj.) Anoka County project coordinates by static GPS methods.

May 16, 2022 - Found 1/2" iron pipe down 0.1'±. Verified position by VRS GPS methods. Updated ties.