

# CERTIFICATE OF LOCATION OF GOVERNMENT CORNER

County of Anoka

State of Minnesota

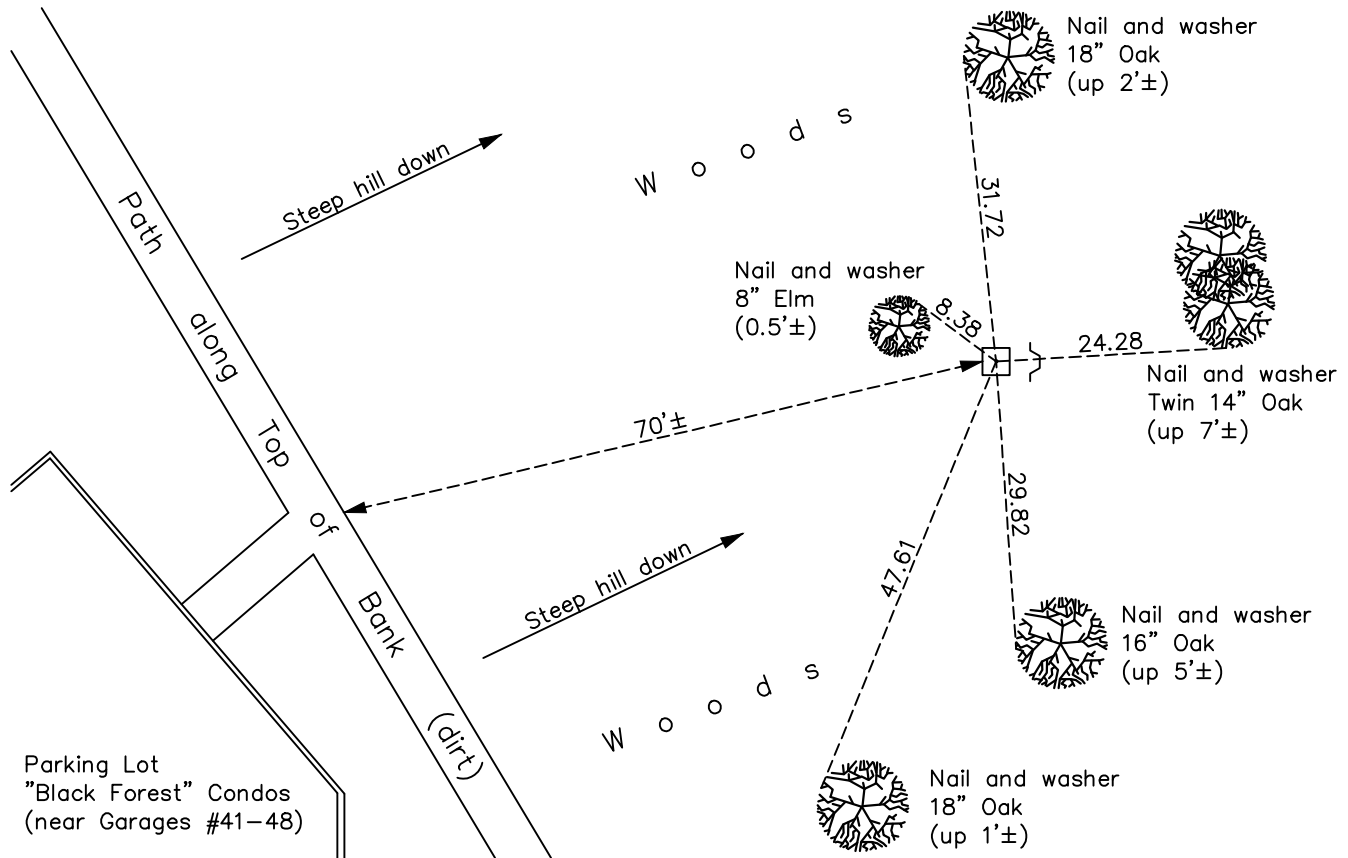
## East 1/4 Corner of Sec. 24 Township 30 Range 24

On the 8th day of July, 1960, the described corner was evidenced by a 8"X8" granite monument

and to perpetuate the location of said corner, at the exact location thereof, a permanent marker was placed consisting of the same granite monument with a "Ramsey County" sign and post on the east side

AND on the 15th day of August, 2022, said permanent marker was found and the ties were updated

Updated reference ties are as shown below.



Revision Date  
12/22/22

N.A.D. 1983 Coordinates  
 (1996 Adjustment)

County Project Coordinates	
Northing	<u>113217.6017</u>
Easting	<u>510156.3777</u>
Date	<u>1/06/05</u>

I hereby certify that this United States public land survey monument record is correct and complete to the best of my knowledge and belief.

David Zieglmeier Date 12/11/23

David Zieglmeier Anoka County Surveyor  
 Minnesota License Number 46179

# HISTORY OF GOVERNMENT CORNER

Page No. 51

County of Anoka

State of Minnesota

## East 1/4 Corner of Sec. 24 Township 30 Range 24

### **CORNER HISTORY:**

June 25, 1947 - Harvey Cartwright found a 8" x 8" granite monument flush and updated the ties.

February 1956 - C.E. Coulter found a granite monument and updated the ties.

January 6, 1957 - Gerorge Hopkins found a granite monument up 6" and updated the ties.

July 8, 1960 - Found 8" x 8" granite monument up 0.3' and updated ties.

June 3, 1964 - Found granite monument and updated ties.

July 6, 1966 - Found granite monument and updated ties.

September 9, 1970 - Found granite monument and updated ties.

June 27, 1974 - Found granite monument and updated ties.

August 4, 1977 - Found granite monument and updated ties.

July 2, 1986 - Found granite monument and updated ties.

August 8, 1989 - Found granite monument and updated ties.

August 1, 1994 - Found granite monument and updated ties.

November 25, 1998 - Found granite monument and updated ties.

January 6, 2005 - Established NAD 1983 (1996 adj.) Anoka County project coordinates by static GPS methods.

September 9, 2008 - Found granite monument and updated ties.

November 6, 2014 - Found granite monument and updated ties.

December 12, 2019 - Found granite monument and updated ties.

August 15, 2022 - Found granite monument. Verified position by VRS GPS methods. Updated ties.