

# CERTIFICATE OF LOCATION OF GOVERNMENT CORNER

County of Anoka

State of Minnesota

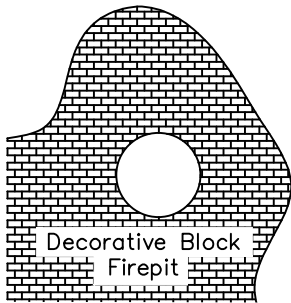
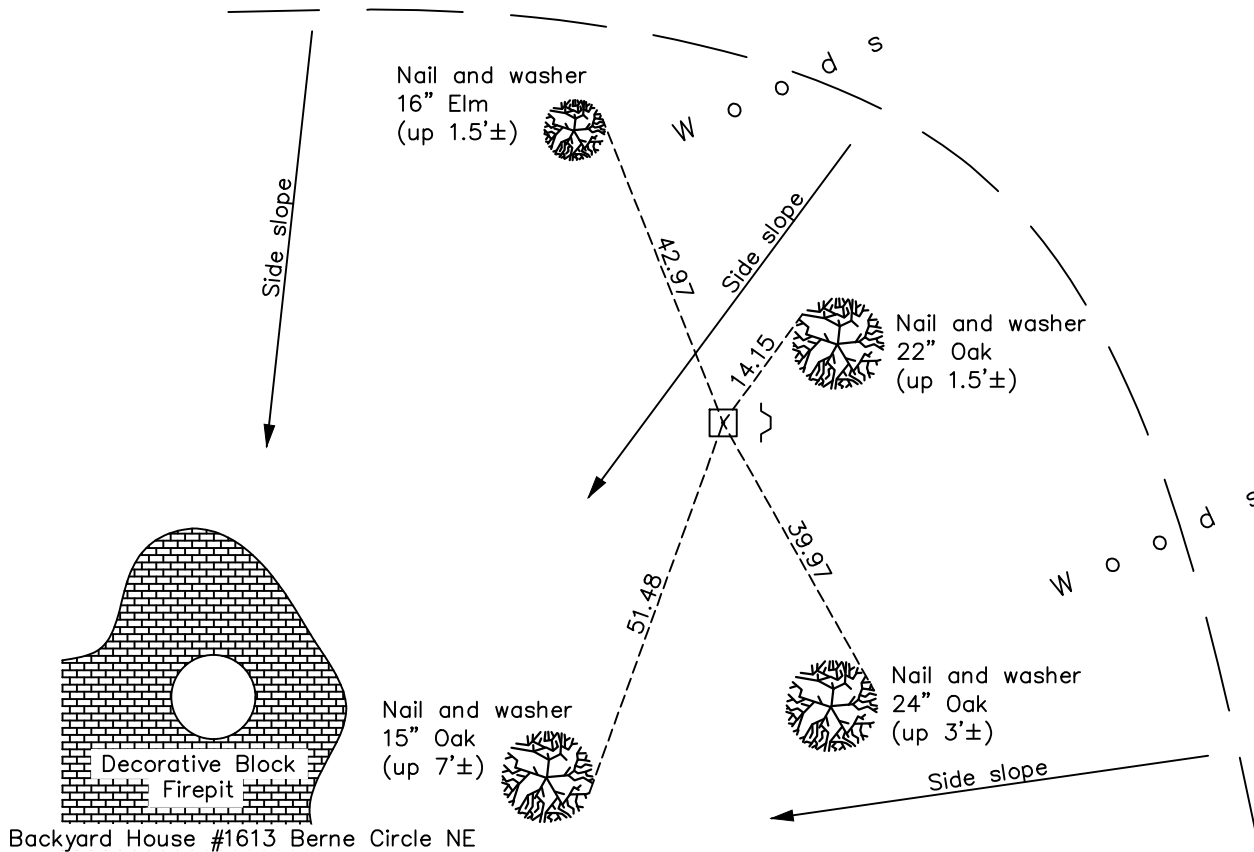
## Northeast Corner of Sec. 25 Township 30 Range 24

On the 8th day of July, 1960, the described corner was evidenced by an 8"X8" granite monument

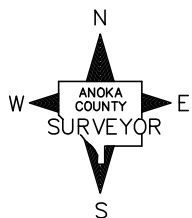
and to perpetuate the location of said corner, at the exact location thereof, a permanent marker was placed consisting of the same granite monument with a "Ramsey County" sign and post on the east side

AND on the 9th day of August, 2022, said permanent marker was found up 0.5'± and the ties were updated

Updated reference ties are as shown below.



Backyard House #1613 Berne Circle NE



Revision Date  
 12/22/22

N.A.D. 1983 Coordinates  
 (1996 Adjustment)

County Project Coordinates	
Northing	110588.7410
Easting	510194.0228
Date	1/06/05

I hereby certify that this United States public land survey monument record is correct and complete to the best of my knowledge and belief.

*David Zieglmeier* Date 12/11/23

David Zieglmeier Anoka County Surveyor  
 Minnesota License Number 46179

# HISTORY OF GOVERNMENT CORNER

Page No. 52

County of Anoka

State of Minnesota

## Northeast Corner of Sec. 25 Township 30 Range 24

### **CORNER HISTORY:**

June 26, 1946 - Harvey Cartwright found a granite monument up 6" and updated the ties.

January 6, 1957 - George Hopkins found a granite monument up 4" and updated the ties.

July 8, 1960 - Found 8" x 8" granite monument up 0.5' with an iron on the North side. Updated ties.

September 6, 1961 - Found granite monument and updated ties. placed a 1-1/2" iron pipe up 3.5'± on the West side.

July 29, 1964 - Found granite monument and updated ties.

November 16, 1965 - Found granite monument and updated ties.

June 28, 1966 - Found granite monument and updated ties.

August 19, 1970 - Found granite monument up 0.3'± and updated ties.

June 26, 1974 - Found granite monument and updated ties.

August 3, 1977 - Found granite monument and updated ties.

July 23, 1980 - Found granite monument and updated ties.

July 20, 1989 - Found granite monument and updated ties.

July 20, 1994 - Found granite monument and updated ties.

August 1, 1994 - Found granite monument and updated ties.

January 6, 2005 - Found granite monument and updated ties.

October 9, 2008 - Found granite monument and updated ties.

November 4, 2014 - Found granite monument and updated ties.

December 13, 2019 - Found granite monument. Verified position by VRS GPS methods. Updated ties.

August 9, 2022 - Found granite monument up 0.5'±. Verified position by VRS GPS methods. Updated ties.