

# CERTIFICATE OF LOCATION OF GOVERNMENT CORNER

County of Anoka

State of Minnesota

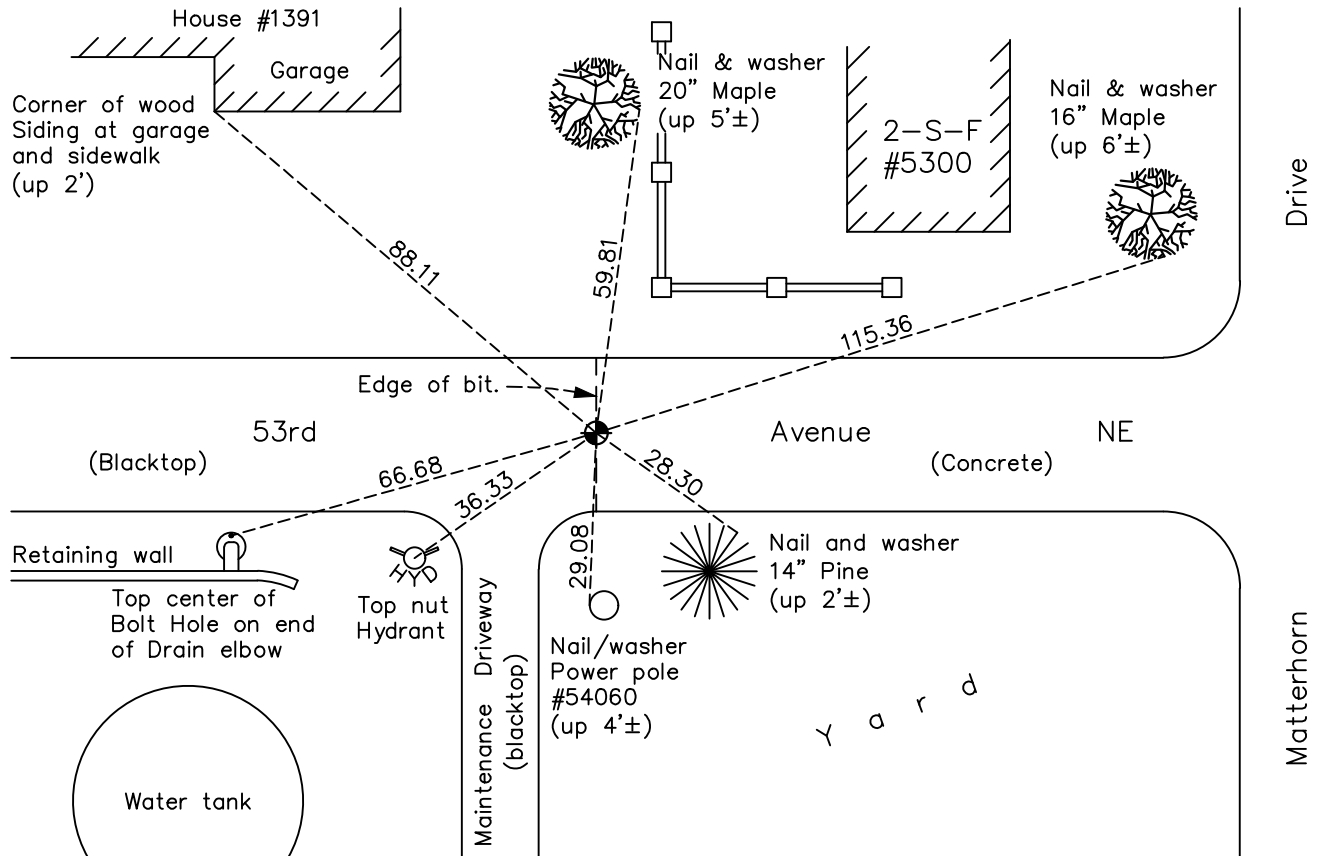
## North 1/4 Corner of Sec. 25 Township 30 Range 24

On the 2nd day of September, 1960, the described corner was evidenced by a 1/2" iron pipe

and to perpetuate the location of said corner, at the exact location thereof, a permanent marker was placed consisting of a cast iron monument

AND on the 9th day of August, 2022, said permanent marker was found down 0.15 and the ties were updated

Updated reference ties are as shown below.



N.A.D. 1983 Coordinates  
(1996 Adjustment)

County Project Coordinates	
Northing	<u>110613.1446</u>
Easting	<u>507583.4709</u>
Date	<u>7/19/04</u>

I hereby certify that this United States public land survey monument record is correct and complete to the best of my knowledge and belief.

David Zieglmeier Date 12/11/23

David Zieglmeier Anoka County Surveyor  
Minnesota License Number 46179

Revision Date  
12/22/22

# HISTORY OF GOVERNMENT CORNER

Page No. 53

County of Anoka

State of Minnesota

## North 1/4 Corner of Sec. 25 Township 30 Range 24

### **CORNER HISTORY:**

January 6, 1958 - George Hopkins found a 1/2" iron flush and updated the ties.

May 1959 - Schoell and Madson found an iron pipe and updated the ties.

September 2, 1960 - Found 1/2" iron pipe and updated ties.

September 6, 1961 - Found 1/2" iron pipe and updated ties.

July 27, 1964 - Found 1/2" iron pipe and updated ties.

June 30, 1966 - Found 1/2" iron pipe and updated ties.

August 19, 1970 - Found 1/2" iron pipe and updated ties.

June 26, 1974 - Found 1/2" iron pipe and updated ties.

October 28, 1975 - Found 1/2" iron pipe and replaced with a cast iron monument. Updated ties.

July 18, 1980 - Found cast iron monument and updated ties.

July 29, 1983 - Found cast iron monument and updated ties.

June 30, 1986 - Found cast iron monument and updated ties.

July 17, 1989 - Found cast iron monument and updated ties.

July 26, 1994 - Found cast iron monument and updated ties.

November 25, 1998 - Found cast iron monument and updated ties.

July 19, 2004 - Established NAD 1983 (1996 adj.) Anoka County project coordinates by static GPS methods.

September 9, 2008 - Found cast iron monument and updated ties.

October 29, 2014 - Found cast iron monument and updated ties.

December 12, 2019 - Found cast iron monument down 0.15'±. Verified position by VRS GPS methods. Updated ties.

August 9, 2022 - Found cast iron monument down 0.15'±. Verified position by VRS GPS methods. Updated ties.