

# CERTIFICATE OF LOCATION OF GOVERNMENT CORNER

County of Anoka

State of Minnesota

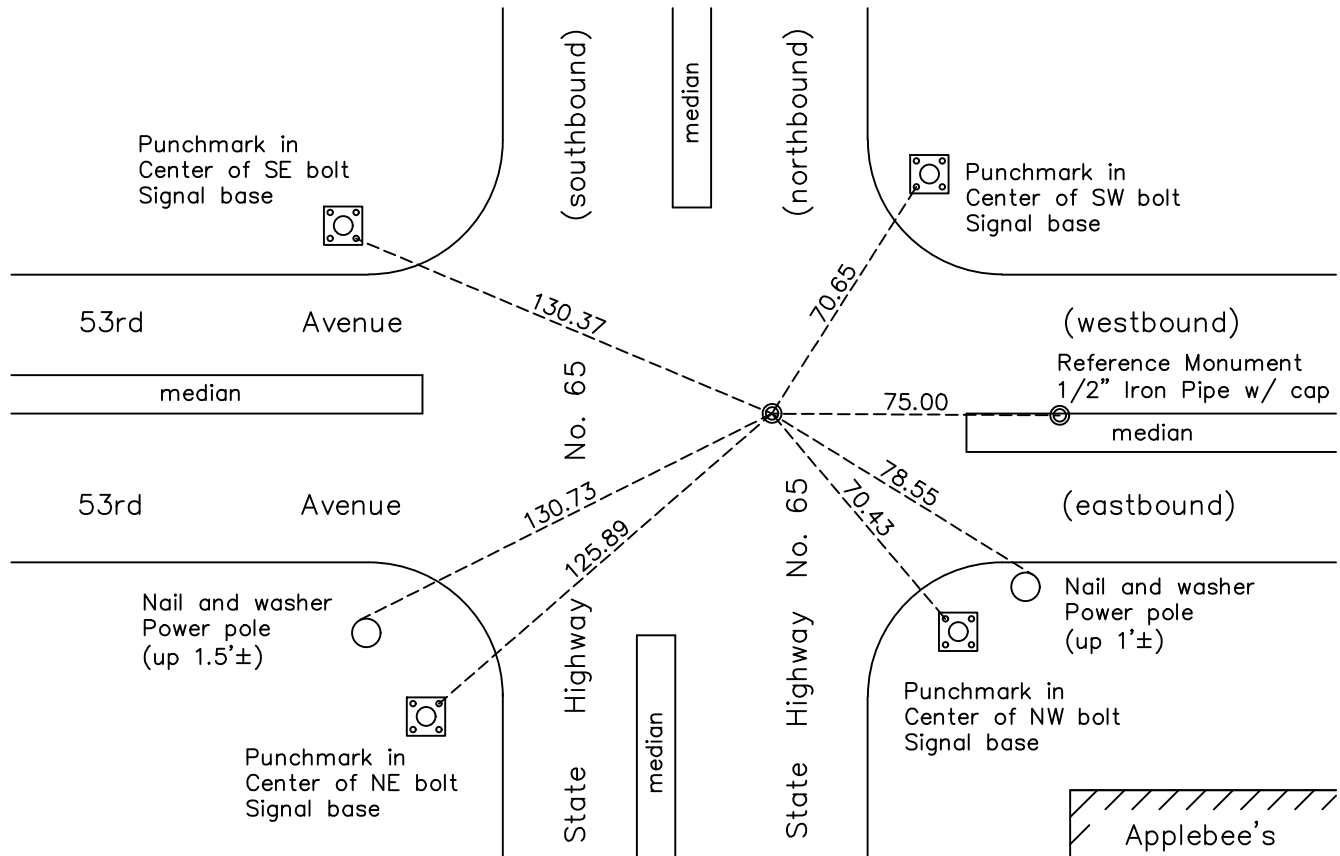
## Northwest Corner of Sec. 25 Township 30 Range 24

On the 10th day of April, 1943, the described corner was evidenced by a chiseled "X" in the concrete

and to perpetuate the location of said corner, at the exact location thereof, a permanent marker was placed consisting of a cast iron monument

AND on the 27th day of October, 2022, said permanent marker was not found. Set a 1/2" iron pipe w/cap flush using area resurvey. Verified position by VRS GPS methods. Updated ties.

Updated reference ties are as shown below.



Revision Date  
10/27/22

N.A.D. 1983 Coordinates  
(1996 Adjustment)

County Project Coordinates	
Northing	<u>110628.807</u>
Easting	<u>504965.704</u>
Date	<u>10/27/2022</u>

I hereby certify that this United States public land survey monument record is correct and complete to the best of my knowledge and belief.

*David Zieglmeier* Date 12/11/23

David Zieglmeier, Anoka County Surveyor

Minnesota License Number 46179

# REFERENCE MONUMENT FOR GOVERNMENT CORNER

*Reference to* County of Anoka State of Minnesota

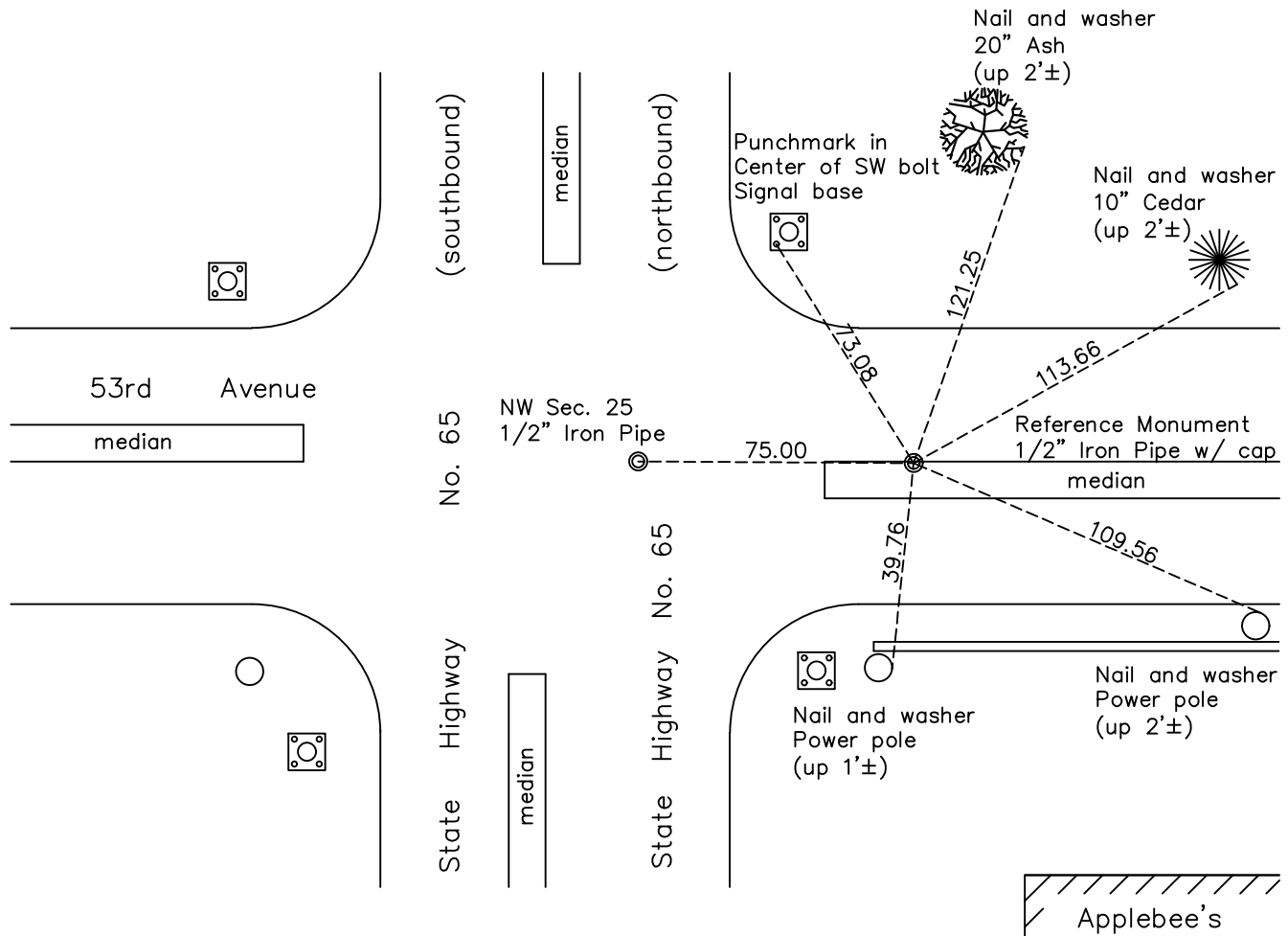
## Northwest Corner of Sec. 25 Township 30 Range 24

On the 11th day of May, 2023, the described reference monument was evidenced by  
a computed position 75' easterly along the section line

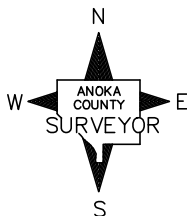
and to reference the location of said corner, at the exact location thereof, a permanent marker  
 was placed consisting of a 1/2" iron pipe w/ cap

AND on the 11th day of May, 2023, said permanent marker was set flush using RTK  
GPS method and ties were established to the reference monument

Updated reference ties are as shown below.



Applebee's



Revision Date  
8/07/2023

**REFERENCE MONUMENT**  
 N.A.D. 1983 (2011 Adj.)

County Project Coordinates	
Northing	110628.357
Easting	505040.703
Date	5/11/2023

# HISTORY OF GOVERNMENT CORNER

Page No. 54

County of Anoka

State of Minnesota

## Northwest Corner of Sec. 25 Township 30 Range 24

### **CORNER HISTORY:**

April 7, 1943 - Harvey Cartwright found an 'X' chiseled in the concrete road and updated the ties.

September 8, 1955 - MNDOT found an 'old cross in pavement'. Shown on MNDOT right-of-way map 1-16.

January 6, 1958 - George Hopkins found an 'X' chiseled in the concrete road and updated the ties.

May 1959 - Schoell and Madson found an iron pipe down 0.2' and updated the ties.

March 24, 1964 - Found a drill hole in the concrete road 0.2' under the blacktop mat and 3.00' East of brass plug on centerline stripe. Set head of cast iron monument flush in drill hole location. Updated ties to cast iron monument.

April 28, 1965 - Found head of cast iron monument and added additional ties prior to road construction.

July 29, 1966 - Found cast iron monument flush and updated ties.

June 26, 1974 - Cast iron monument not found.

August 3, 1977 - Road under construction.

August 21, 1978 - Found cast iron monument flush in concrete road. Updated ties after construction.

July 16, 1980 - Found cast iron monument and updated ties.

June 30, 1986 - Found cast iron monument and updated ties.

August 4, 1989 - Found cast iron monument and updated ties.

October 24, 1990 - Found cast iron monument and updated ties.

October 27, 2022 - Cast iron monument not found. Set a 1/2" iron pipe w/cap flush using area resurvey and the 1978 I-File #89 computations. Verified position by VRS GPS methods and updated ties. A reference monument was set on May 11, 2023 (1/2" iron pipe w/cap flush) 75 feet to the east along the Section line between the NW corner of Section 25 and the north 1/4 corner of Section 25. Data can be found referencing survey project number 22-107.

#### Ties to existing Section Corners

2,658.01' from the south 1/4 corner of Section 23 (CIM)

2,651.97' from the west 1/4 corner of Section 24 (CIM)

2,617.81' from the north 1/4 corner of Section 25 (CIM)

2,635.19' from the east 1/4 corner of Section 26 (1/2" IP)