

CERTIFICATE OF LOCATION OF GOVERNMENT CORNER

County of Anoka

State of Minnesota

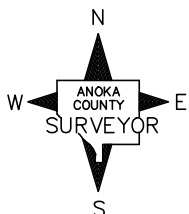
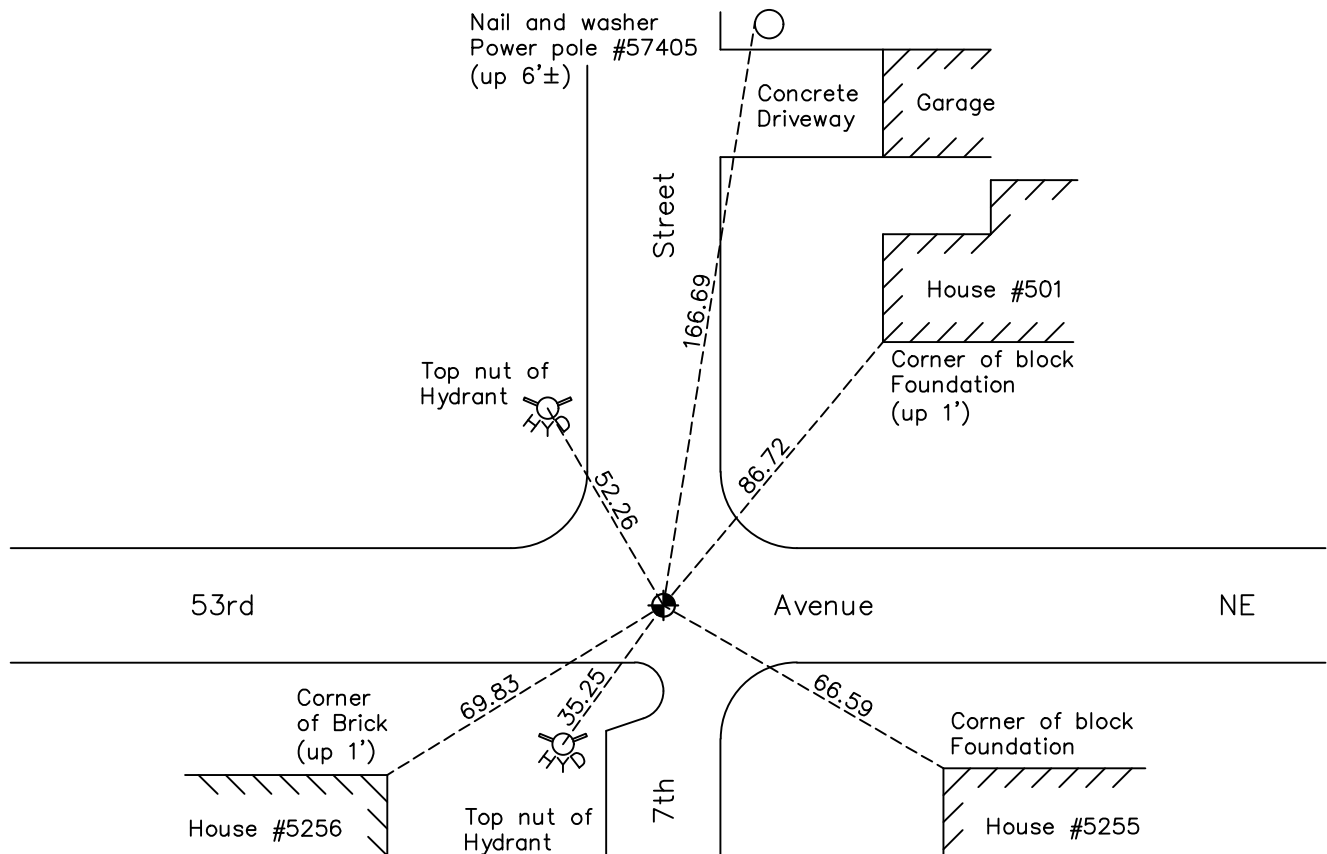
South 1/4 Corner of Sec. 23 Township 30 Range 24

On the 8th day of September, 1961, the described corner was evidenced by a 60d spike

and to perpetuate the location of said corner, at the exact location thereof, a permanent marker was placed consisting of a cast iron monument

AND on the 13th day of December, 2019, said permanent marker was found and the ties were updated

Updated reference ties are as shown below.



Revision Date

7/24/20

N.A.D. 1983 Coordinates
(1996 Adjustment)

| | |
|----------------------------|--------------------|
| County Project Coordinates | |
| Northing | <u>110637.1718</u> |
| Easting | <u>502307.7079</u> |
| Date | <u>7/22/03</u> |

I hereby certify that this United States public land survey monument record is correct and complete to the best of my knowledge and belief.

David Zieglmeier Date 5/24/22

David Zieglmeier Anoka County Surveyor
Minnesota License Number 46179

HISTORY OF GOVERNMENT CORNER

Page No. 55

County of Anoka

State of Minnesota

South 1/4 Corner of Sec. 23 Township 30 Range 24

CORNER HISTORY:

June 15, 1943 - Harvey Cartwright found an iron flush and replaced with a concrete monument. Updated ties.

September 8, 1961 - Found a 60 penny spike and checked position against area platting. Replaced with a 1/2" iron pipe and updated the ties.

July 27, 1964 - Found 1/2" iron pipe and updated ties.

November 1, 1965 - Found P.K. nail and updated ties.

June 30, 1966 - Found P.K. nail and updated ties.

September 23, 1966 - Found P.K. nail and replaced with a cast iron monument. Updated ties.

August 18, 1970 - Found cast iron monument and updated ties.

June 27, 1974 - Found cast iron monument and updated ties.

August 4, 1977 - Found cast iron monument and updated ties.

July 17, 1980 - Found cast iron monument and updated ties.

June 30, 1986 - Found cast iron monument and updated ties.

July 26, 1989 - Found cast iron monument and updated ties.

July 26, 1994 - Found cast iron monument and updated ties.

November 25, 1998 - Found cast iron monument and updated ties.

July 22, 2003 - Established NAD 1983 (1996 adj.) Anoka County project coordinates by static GPS methods.

September 9, 2008 - Found cast iron monument and updated ties.

October 27, 2014 - Found cast iron monument. Verified position by VRS GPS methods. Updated ties.

December 13, 2019 - Found cast iron monument. Verified position by VRS GPS methods. Updated ties.