

CERTIFICATE OF LOCATION OF GOVERNMENT CORNER

County of Anoka

State of Minnesota

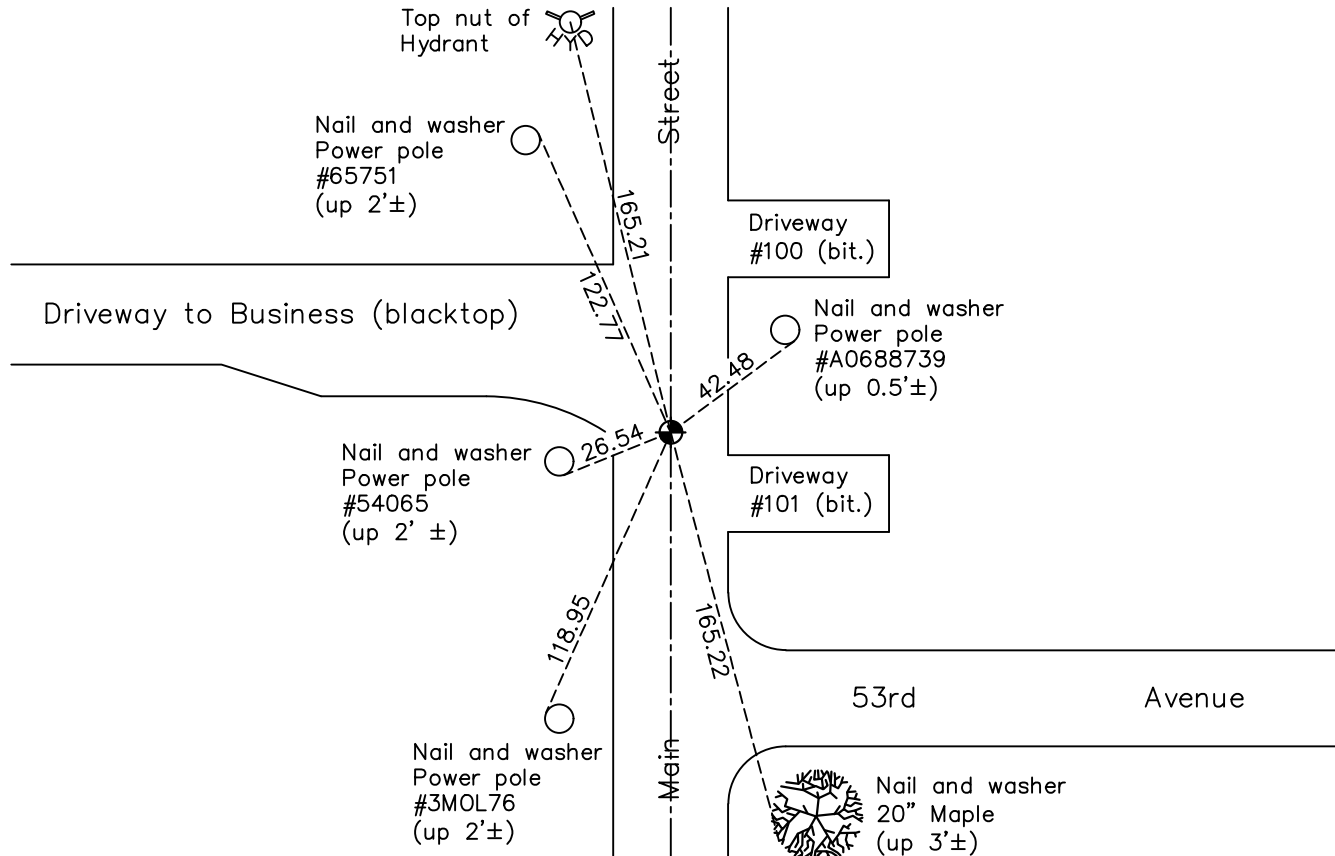
Northwest Corner of Sec. 26 Township 30 Range 24

On the 20th day of July, 1960, the described corner was evidenced by Found iron pipe

and to perpetuate the location of said corner, at the exact location thereof, a permanent marker was placed consisting of a cast iron monument set on June 27, 1966

AND on the 19th day of August, 2022, said permanent marker was Found flush and the ties were updated.

Updated reference ties are as shown below.



Revision Date
12/23/22

N.A.D. 1983 Coordinates
(1996 Adjustment)

County Project Coordinates	
Northing	<u>110644.3110</u>
Easting	<u>499649.1248</u>
Date	<u>8/18/03</u>

I hereby certify that this United States public land survey monument record is correct and complete to the best of my knowledge and belief.

David Zieglmeier Date 12/11/23

David Zieglmeier Anoka County Surveyor
Minnesota License Number 46179

HISTORY OF GOVERNMENT CORNER

Page No. 56

County of Anoka

State of Minnesota

Northwest Corner of Sec. 26 Township 30 Range 24

CORNER HISTORY:

May 1959 - Suburban Engineering found an iron pipe and updated the ties.

July 20, 1960 - Found iron pipe down 1' and updated ties.

September 6, 1961 - Set temporary 10 penny nail and washer using Suburban engineering ties and area resurvey. Updated ties.

July 30, 1964 - Found temporary 10 penny nail and replaced with a cast iron monument. Updated ties.

June 27, 1966 - Found cast iron monument and updated ties.

August 12, 1970 - Found cast iron monument and updated ties.

June 27, 1974 - Found cast iron monument and updated ties.

October 6, 1975 - Found cast iron monument down and raised flush.

July 17, 1980 - Found cast iron monument and updated ties.

July 24, 1989 - Found cast iron monument and updated ties.

May 10, 1995 - Reset cast iron monument after road construction. Updated ties.

August 18, 2003 - Established NAD 1983 (1996 adj.) Anoka County project coordinates by static GPS methods.

September 9, 2008 - Found cast iron monument and updated ties.

October 27, 2014 - Found cast iron monument. Verified position by VRS GPS methods. Updated ties.

June 12, 2019 - Updated construction ties and removed CIM prior to road construction

April 7, 2020 - Reset with a cast iron monument, set flush to surface, after road construction using static GPS methods and the ties were updated

August 19, 2022 - Found cast iron monument flush. Verified position by VRS GPS methods. Updated ties.