

CERTIFICATE OF LOCATION OF GOVERNMENT CORNER

County of Anoka

State of Minnesota

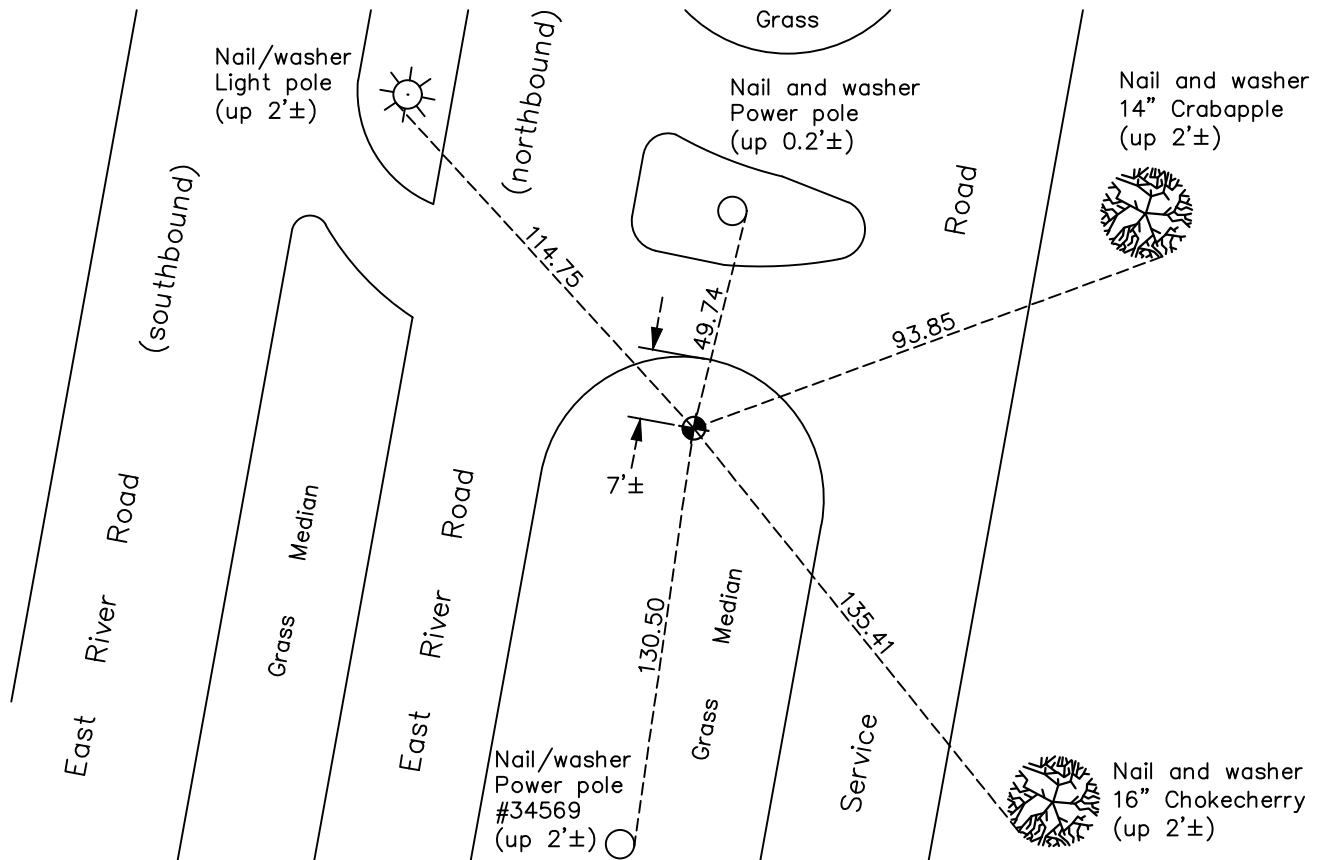
Judicial Corner of Sec. 27 Township 30 Range 24
(on north line of section)

On the 22nd day of October, 1964, the described corner was evidenced by a 6" brass cap

and to perpetuate the location of said corner, at the exact location thereof, a permanent marker was placed consisting of a cast iron monument

AND on the 8th day of August, 2022, said permanent marker was found down 0.5'± and the ties were updated

Updated reference ties are as shown below.



Revision Date
12/23/22

N.A.D. 1983 Coordinates
 (1996 Adjustment)

County Project Coordinates	
Northing	110687.8060
Easting	496464.4372
Date	6/08/04

I hereby certify that this United States public land survey monument record is correct and complete to the best of my knowledge and belief.

David Zieglmeier Date 12/11/23

David Zieglmeier Anoka County Surveyor
 Minnesota License Number 46179

HISTORY OF GOVERNMENT CORNER

Page No. 58

County of Anoka

State of Minnesota

Judicial Corner of Sec. 27 Township 30 Range 24
(on north line of section)

CORNER HISTORY:

October 22, 1964 - Found 6" brass cap on a 5: iron pipe marked Judicial Landmark. Updated ties.

June 27, 1966 - Found 6" brass cap (JLM) and updated ties.

August 20, 1970 - Found 6" brass cap (JLM) and updated ties.

March 21, 1974 - Found 6" brass cap (JLM) undisturbed after construction and updated the ties.

June 27, 1974 - Found 6" brass cap (JLM) and updated ties.

July 21, 1980 - Found cast iron monument (JLM) and updated ties.

August 1, 1983 - Found cast iron monument (JLM) and updated ties.

June 29, 1986 - Found cast iron monument (JLM) and updated ties.

July 26, 1989 - Found cast iron monument (JLM) and updated ties.

August 1, 1994 - Found cast iron monument (JLM) and updated ties.

June 8, 2004 - Established NAD 1983 (1996 adj.) Anoka County project coordinates by static GPS methods.

September 10, 2008 - Found cast iron monument (JLM) and updated ties.

October 27, 2014 - Found cast iron monument (JLM) down 0.5'±. Verified position by VRS GPS methods.
Updated ties.

December 13, 2019 - Found cast iron monument (JLM) down 0.5'±. Verified position by VRS GPS methods.
Updated ties.

August 8, 2022 - Found cast iron monument (JLM) down 0.5'±. Verified position by VRS GPS methods.
Updated ties.