

CERTIFICATE OF LOCATION OF GOVERNMENT CORNER

County of Anoka

State of Minnesota

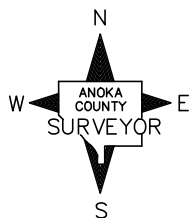
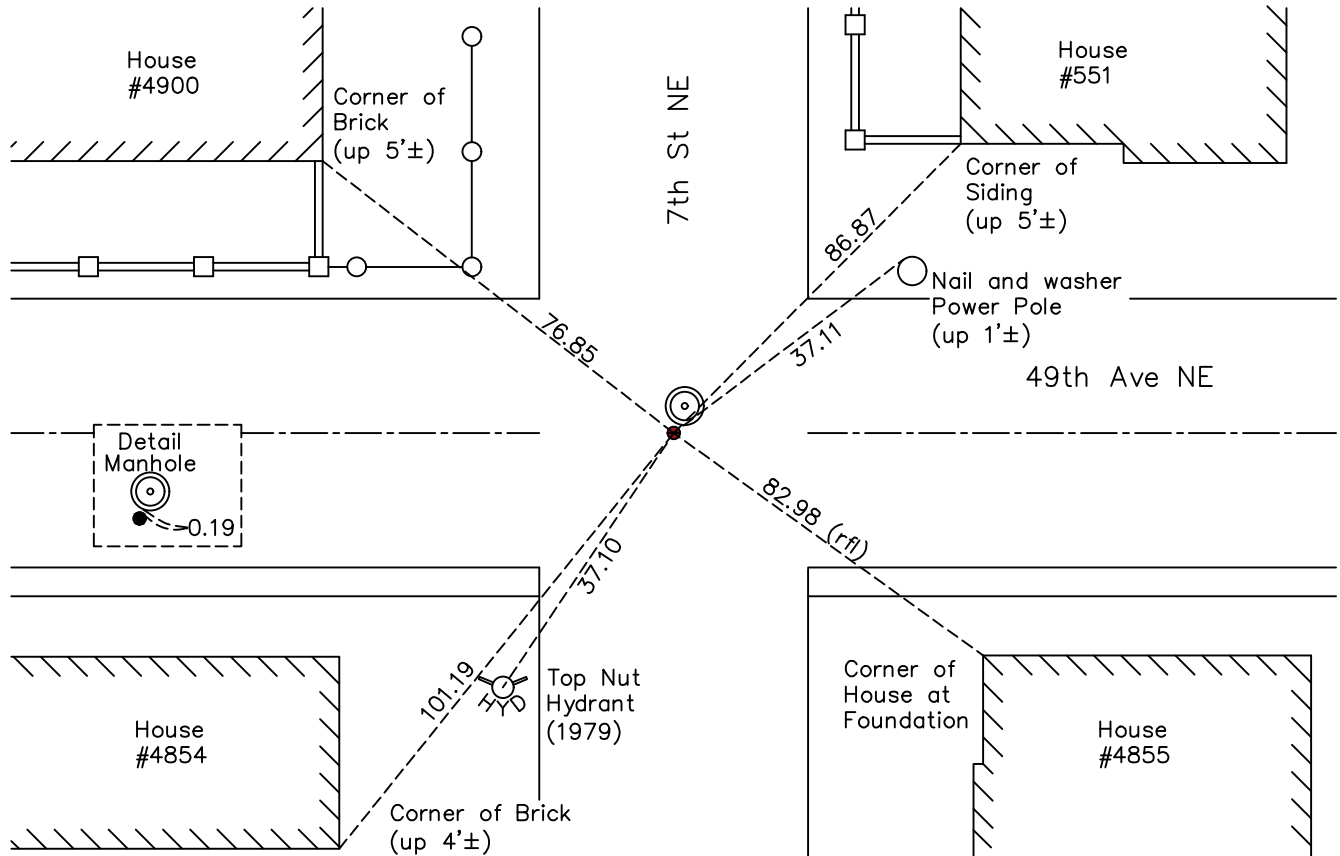
Center Corner of Sec. 26 Township 30 Range 24

On the August day of 24, 1989, the described corner was evidenced by a P.K. Spike

and to perpetuate the location of said corner, at the exact location thereof, a permanent marker was placed consisting of a P.K. Nail

AND on the 24th day of August, 2023, said permanent marker was reset with a P.K. Nail and the ties were re-established

Updated reference ties are as shown below.



Revision Date
8/28/2023

N.A.D. 1983 Coordinates
 (2011 Adjustment)

County Project Coordinates	
Northing	<u>107999.804</u>
Easting	<u>502312.933</u>
Date	<u>8/24/2023</u>

I hereby certify that this United States public land survey monument record is correct and complete to the best of my knowledge and belief.

David Zieglsmeier Date 12/11/23

David M. Zieglsmeier, Anoka County Surveyor
 Minnesota License Number 46179

HISTORY OF GOVERNMENT CORNER

County of Anoka

State of Minnesota

Center Corner of Sec. 26 Township 30 Range 24

CORNER HISTORY:

May 2, 1961 - Found P.K. Spike and checked ties

July 27, 1964- Found P.K. Spike and checked ties

June 30, 1966 - Found P.K. Spike and checked ties

August 20, 1970 - Found P.K. Spike and checked ties

June 27, 1974 - Found P.K. Spike and checked ties

August 4, 1977 - Found P.K. Spike and checked ties

July 17, 1980 - Found P.K. Spike and checked ties

August 1, 1989 - Found P.K. Nail and checked ties

August 24, 2023 - Center position was reset with a P.K. Nail, set flush, using RTK GPS method. Re-established ties to the Center monument.