

CERTIFICATE OF LOCATION OF GOVERNMENT CORNER

County of Anoka

State of Minnesota

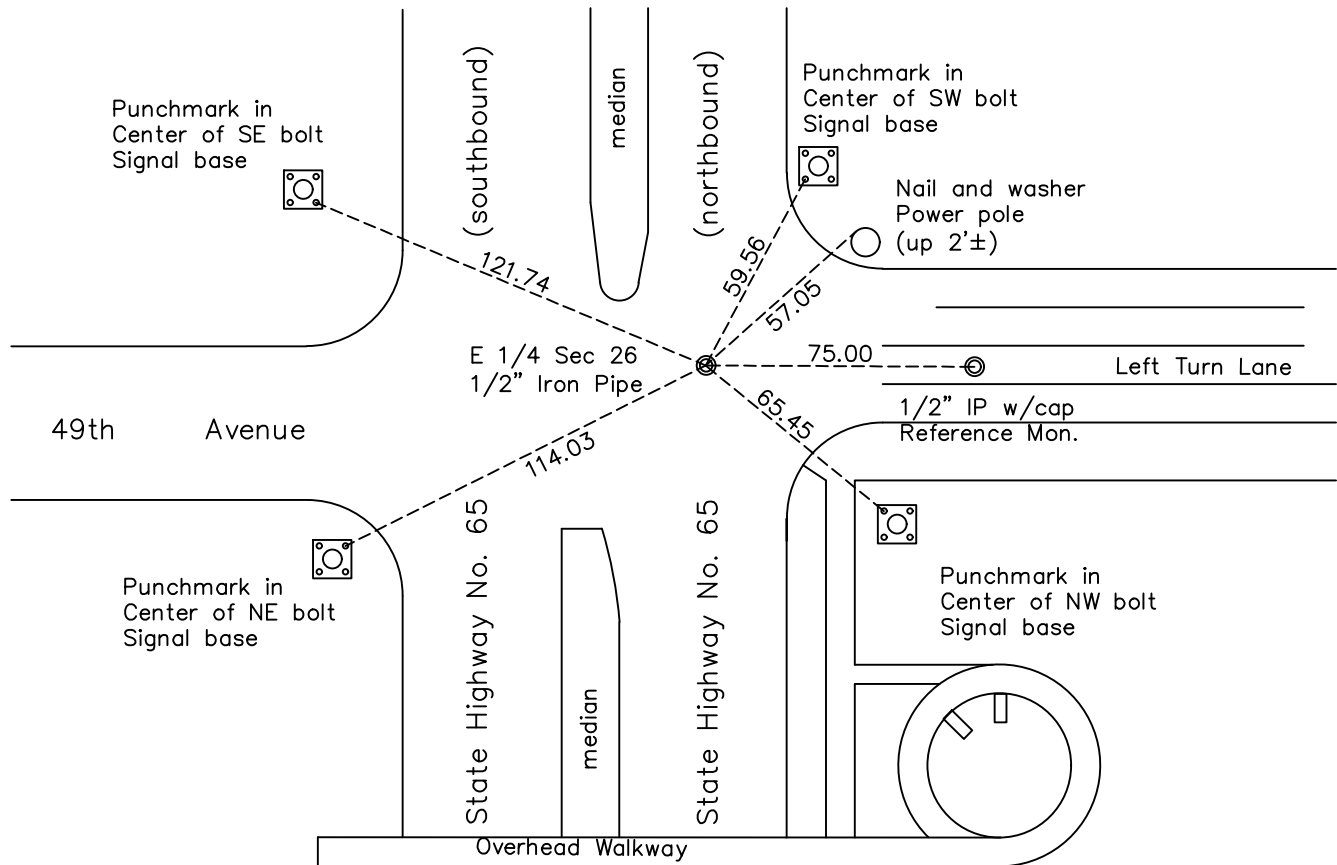
East 1/4 Corner of Sec. 26 Township 30 Range 24

On the 10th day of April, 1943, the described corner was evidenced by an 'X' chiseled into the centerline of State Highway No. 65 by Harvey Cartwright

and to perpetuate the location of said corner, at the exact location thereof, a permanent marker was placed consisting of a 1/2" iron pipe

AND on the 27th day of October, 2022, said permanent marker was not found. Set a 1/2" iron pipe w/cap flush using area resurvey. Verified position by VRS GPS methods. Updated ties.

Updated reference ties are as shown below.



N.A.D. 1983 Coordinates
(1996 Adjustment)

County Project Coordinates	
Northing	<u>107993.634</u>
Easting	<u>504974.706</u>
Date	<u>10/27/2022</u>

Revision Date
10/27/22

I hereby certify that this United States public land survey monument record is correct and complete to the best of my knowledge and belief.

David Zieglmeier Date 12/11/23

David Zieglmeier, Anoka County Surveyor
 Minnesota License Number 46179

REFERENCE MONUMENT FOR GOVERNMENT CORNER

Reference to County of Anoka State of Minnesota

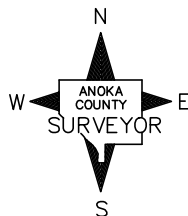
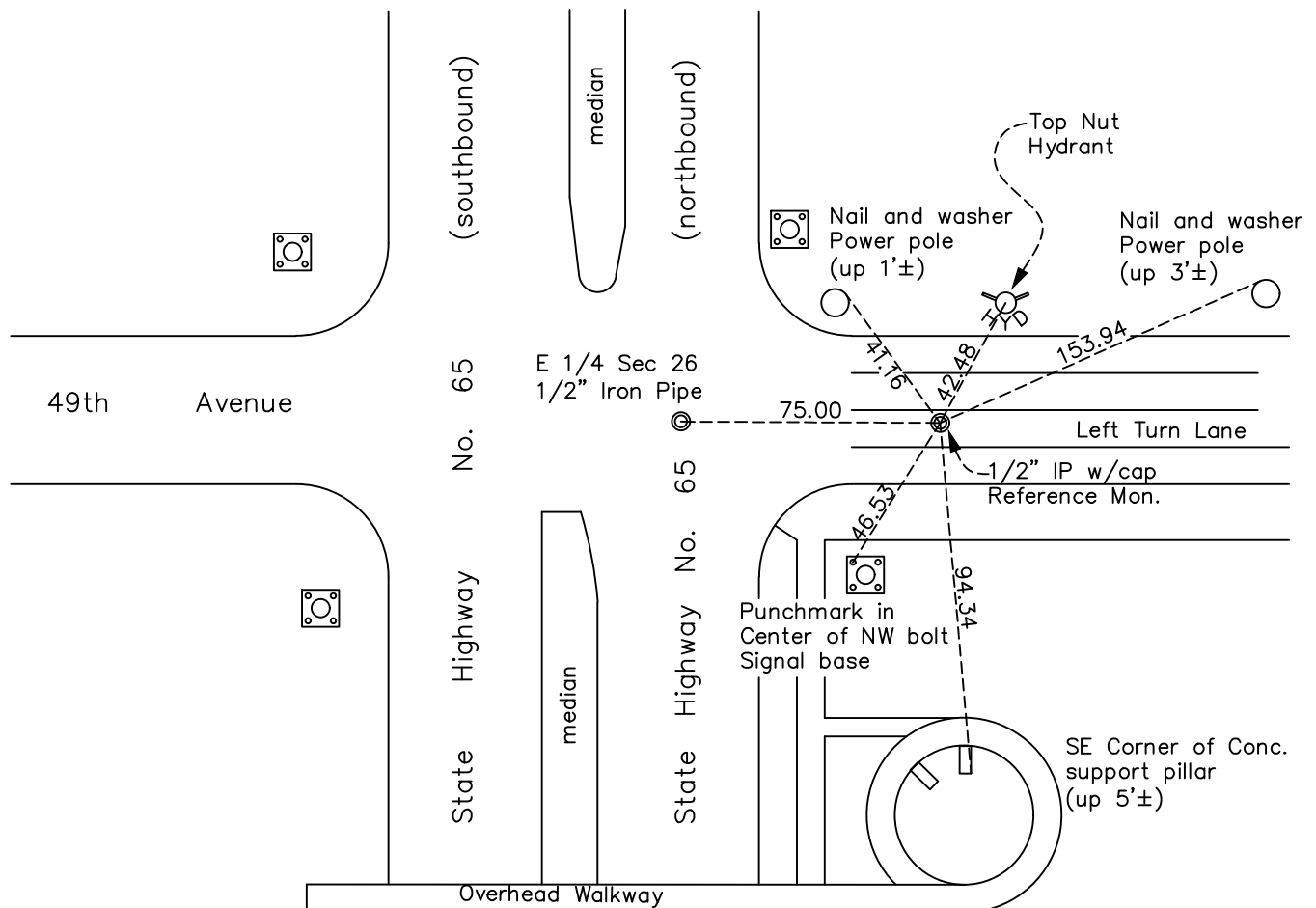
East 1/4 Corner of Sec. 26 Township 30 Range 24

On the 11th day of May, 2023, the described reference monument was evidenced by a computed position 75' easterly along the section line

and to reference the location of said corner, at the exact location thereof, a permanent marker was placed consisting of a 1/2" iron pipe w/ cap

AND on the 11th day of May, 2023, said permanent marker was set flush using RTK GPS method and ties were established to the reference monument

Updated reference ties are as shown below.



REFERENCE MONUMENT

N.A.D. 1983 (2011 Adj.)

Revision Date

8/07/2023

County Project Coordinates	
Northing	107993.261
Easting	505049.705
Date	5/11/2023

HISTORY OF GOVERNMENT CORNER

Page No. 61

County of Anoka

State of Minnesota

East 1/4 Corner of Sec. 26 Township 30 Range 24

CORNER HISTORY:

April 7, 1943 - Harvey Cartwright found a chiseled 'X' in the concrete road State Highway No. 65. Updated ties.

September 8, 1955 - MNDOT found a 'hole and cross in pavement'. Shown on MNDOT right-of-way map 1-16.

January 6, 1958 - George Hopkins found a chiseled 'X' in the concrete road and updated the ties.

March 24, 1964 - Found P.K. spike and updated ties.

August 6, 1964 - Found P.K. spike and replaced with the head of a cast iron monument flush with road.
Updated ties.

June 30, 1966 - Found head of cast iron monument and updated ties.

August 13, 1970 - Found head of cast iron monument and updated ties.

June 27, 1974 - Found head of cast iron monument and updated ties.

July 16, 1980 - Found head of cast iron monument and updated ties.

June 30, 1986 - Found head of cast iron monument and updated ties.

August 4, 1989 - Found head of cast iron monument and updated ties.

September 22, 1994 - Set 1/2" iron pipe after road construction and updated ties.

October 27, 2022 - 1/2" iron pipe not found. Set a 1/2" iron pipe w/cap flush using area resurvey and the 1978 I-File #89 computations. Verified position by VRS GPS methods and updated the ties. A reference monument was set on May 11, 2023 (1/2" iron pipe w/cap flush) 75 feet to the east along the Section line between the east 1/4 corner of Section 26 and the east 1/4 corner of section 25. Data can be found referencing survey project number 22-107.

Ties to existing Section Corners

2,635.19' from the NW corner of Section 25 (1/2" IP)

2,623.29' from the NW corner of Section 36 (1/2" IP)