

CERTIFICATE OF LOCATION OF GOVERNMENT CORNER

County of Anoka

State of Minnesota

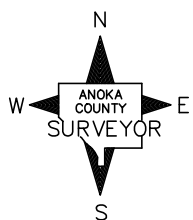
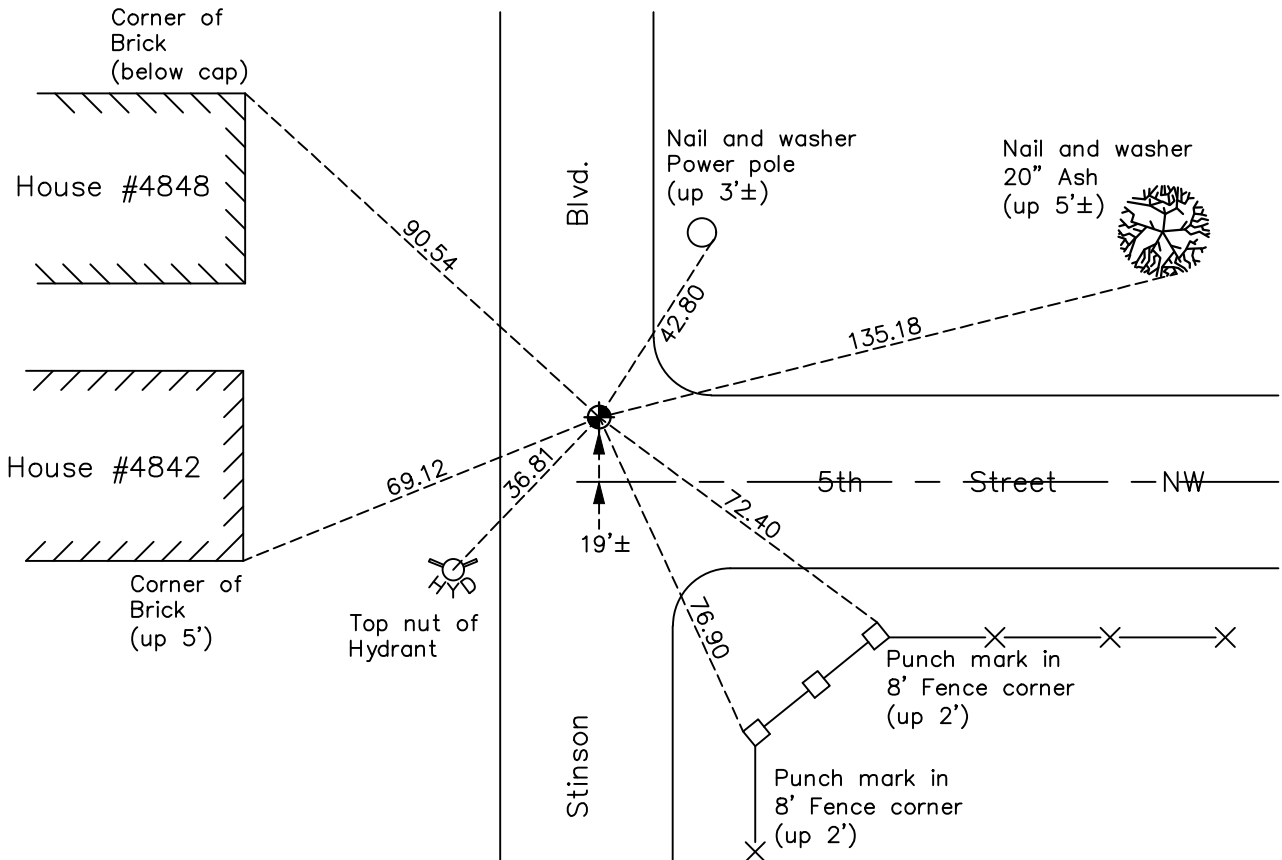
East 1/4 Corner of Sec. 25 Township 30 Range 24

On the 23rd day of August, 1967, the described corner was evidenced by a spike

and to perpetuate the location of said corner, at the exact location thereof, a permanent marker was placed consisting of a cast iron monument

AND on the 9th day of August, 2022, said permanent marker was found flush and the ties were updated.

Updated reference ties are as shown below.



Revision Date

12/23/22

N.A.D. 1983 Coordinates
(1996 Adjustment)

County Project Coordinates	
Northing	107967.4674
Easting	510229.9292
Date	5/05/03

I hereby certify that this United States public land survey monument record is correct and complete to the best of my knowledge and belief.

David Zieglmeier Date 12/11/23

David Zieglmeier Anoka County Surveyor
Minnesota License Number 46179

HISTORY OF GOVERNMENT CORNER

Page No. 63

County of Anoka

State of Minnesota

East 1/4 Corner of Sec. 25 Township 30 Range 24

CORNER HISTORY:

January 6, 1958 - George Hopkins found a granite monument flush and updated the ties.

September 14, 1960 - Found 8" x 8" granite flush with a drill hole in the top and updated the ties.

September 6, 1961 - Found granite monument and updated ties.

May 10, 1963 - Found granite monument and updated ties prior to road construction.

November 5, 1965 - Removed granite monument and replaced with a spike. Updated ties.

June 28, 1966 - Found spike and updated ties.

August 23, 1967 - Found spike and replaced with a cast iron monument flush. Updated ties.

August 19, 1970 - Found cast iron monument and updated ties.

June 27, 1974 - Found cast iron monument and updated ties.

August 4, 1977 - Found cast iron monument and updated ties.

July 18, 1980 - Found cast iron monument and updated ties.

June 30, 1986 - Found cast iron monument and updated ties.

July 26, 1989 - Found cast iron monument and updated ties.

July 26, 1994 - Found cast iron monument and updated ties.

May 5, 2003 - Established NAD 1983 (1996 adj.) Anoka County project coordinates by static GPS methods.

September 10, 2008 - Found cast iron monument and updated ties.

June 11, 2014 - Found cast iron monument, verified position by VRS GPS methods and updated ties prior to road construction.

August 14, 2014 - Set cast iron monument after road construction. Verified position by VRS GPS methods. Updated ties.

December 19, 2019 - Found cast iron monument. Verified position by VRS GPS methods. Updated ties.

August 9, 2022 - Found cast iron monument flush. Verified position by VRS GPS methods. Updated ties.