

# CERTIFICATE OF LOCATION OF GOVERNMENT CORNER

County of Anoka

State of Minnesota

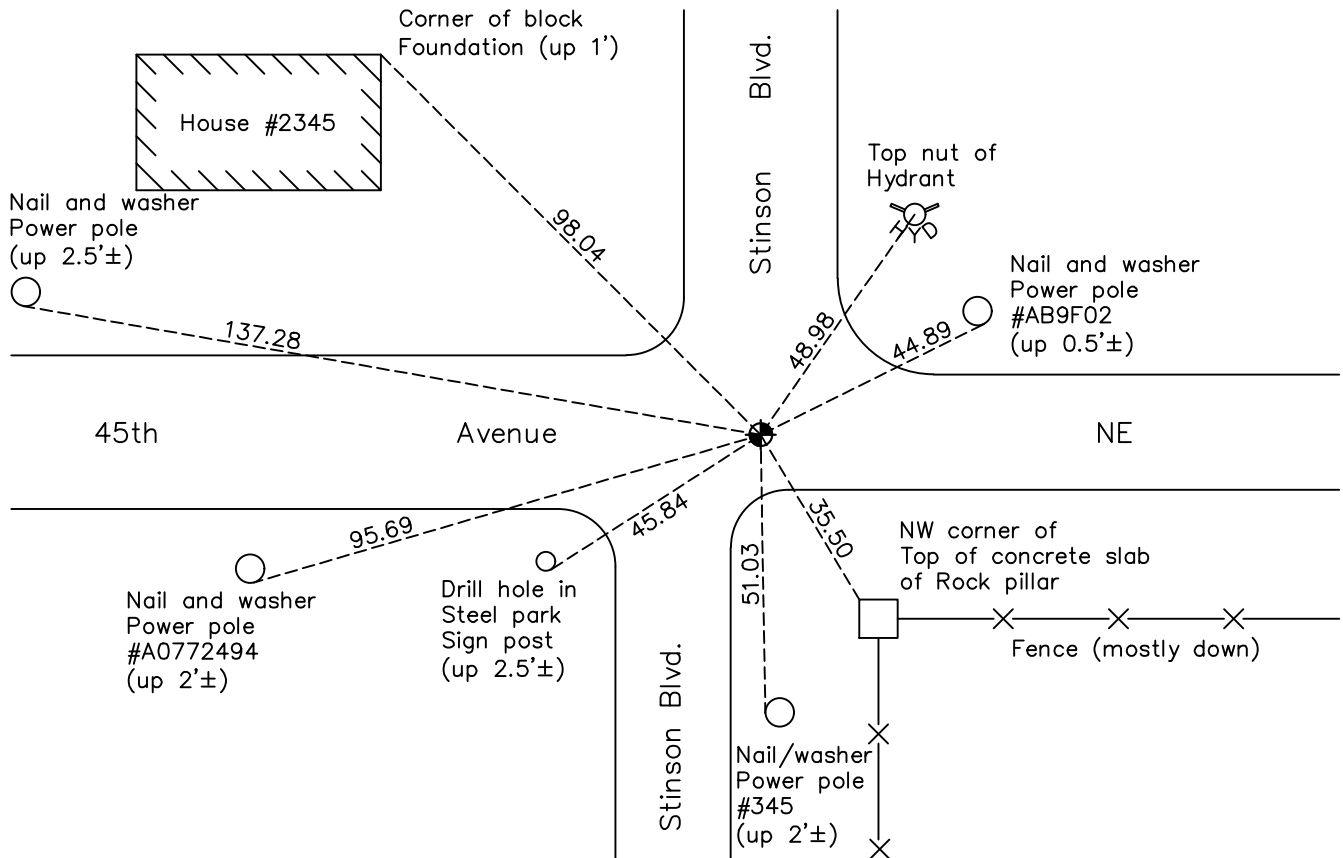
## Northeast Corner of Sec. 36 Township 30 Range 24

On the 13th day of September, 1960, the described corner was evidenced by an 8"X8" granite monument

and to perpetuate the location of said corner, at the exact location thereof, a permanent marker was placed consisting of August 4, 1977 found a Ramsey County cast iron monument

AND on the 12th day of August, 2022, said permanent marker was found and the ties were updated

Updated reference ties are as shown below.



Revision Date  
12/23/22

N.A.D. 1983 Coordinates  
(1996 Adjustment)

County Project Coordinates	
Northing	<u>105352.3785</u>
Easting	<u>510244.7195</u>
Date	<u>5/05/03</u>

I hereby certify that this United States public land survey monument record is correct and complete to the best of my knowledge and belief.

*David Zieglmeier* Date 12/11/23

David Zieglmeier Anoka County Surveyor  
Minnesota License Number 46179

# HISTORY OF GOVERNMENT CORNER

Page No. 64

County of Anoka

State of Minnesota

## Northeast Corner of Sec. 36 Township 30 Range 24

### **CORNER HISTORY:**

April 8, 1943 - Found 8" x 8" granite monument down 0.5' in road and updated ties.

September 20, 1946 - Egan, Field and Nowak found a granite monument down 4" and updated the ties.

September 4, 1956 - Minneapolis Water Works found a granite monument and updated the ties.

September 13, 1960 - Found 8" x 8" granite monument down 0.6' and updated ties.

May 18, 1961 - Found granite monument and updated ties.

May 15, 1964 - Found granite monument and updated ties.

April 28, 1965 - Found granite monument and updated ties.

June 28, 1966 - Found granite monument and updated ties.

August 13, 1970 - Found granite monument and updated ties.

June 27, 1974 - Found granite monument and updated ties.

August 4, 1977 - Found Ramsey County cast iron monument and updated ties.

July 18, 1980 - Found Ramsey County cast iron monument and updated ties.

June 26, 1986 - Found Ramsey County cast iron monument and updated ties.

July 26, 1989 - Found Ramsey County cast iron monument and updated ties.

July 26, 1994 - Found Ramsey County cast iron monument and updated ties.

May 5, 2003 - Established NAD 1983 (1996 adj.) Anoka County project coordinates by static GPS methods.

September 10, 2008 - Found Ramsey County cast iron monument and updated ties.

October 23, 2014 - Found Ramsey County cast iron monument down 0.2'± under blacktop. Verified position by VRS GPS methods. Updated ties.

May 12, 2015 - Found Ramsey County cast iron monument. Set construction ties, verified position by VRS GPS methods and updated corner ties prior to construction. Removed monument.

November 13, 2015 - Set a 0.6' long Anoka County cast iron monument flush with road on top of granite monument using static GPS methods. Updated ties.

December 19, 2019 - Found cast iron monument. Verified position by VRS GPS methods. Updated ties.

August 12, 2022 - Found cast iron monument. Verified position by VRS GPS methods. Updated ties.