

CERTIFICATE OF LOCATION OF GOVERNMENT CORNER

County of Anoka

State of Minnesota

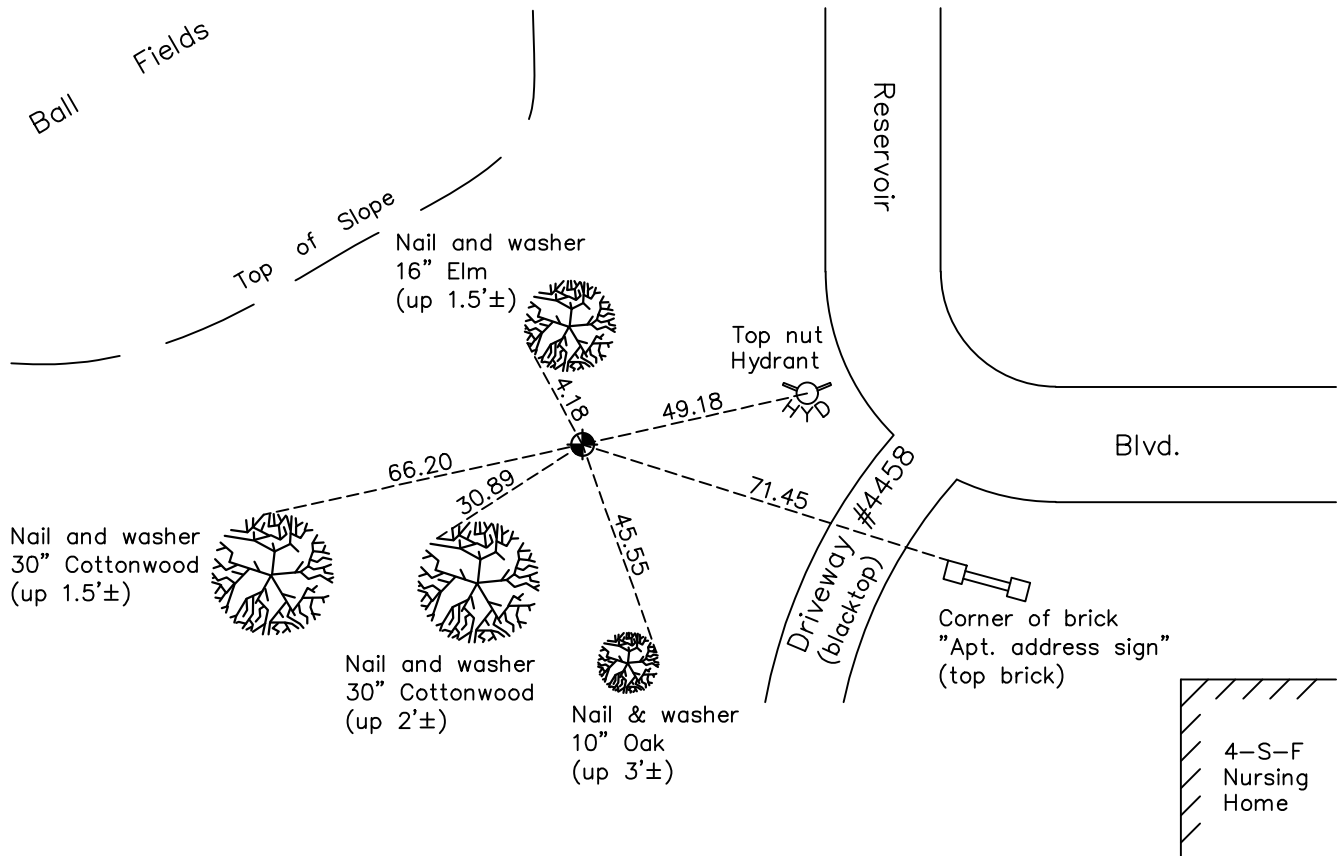
North 1/4 Corner of Sec. 36 Township 30 Range 24

On the 11th day of April, 1962, the described corner was evidenced by a 1" iron pipe

and to perpetuate the location of said corner, at the exact location thereof, a permanent marker was placed consisting of a cast iron monument

AND on the 15th day of August, 2022, said permanent marker was found flush and the ties were updated

Updated reference ties are as shown below.



Revision Date
12/23/22

N.A.D. 1983 Coordinates
 (1996 Adjustment)

County Project Coordinates	
Northing	<u>105352.8517</u>
Easting	<u>507608.5956</u>
Date	<u>8/21/03</u>

I hereby certify that this United States public land survey monument record is correct and complete to the best of my knowledge and belief.

David Zieglmeier Date 12/11/23

David Zieglmeier Anoka County Surveyor
 Minnesota License Number 46179

HISTORY OF GOVERNMENT CORNER

Page No. 65

County of Anoka

State of Minnesota

North 1/4 Corner of Sec. 36 Township 30 Range 24

CORNER HISTORY:

September 4, 1956 - Minneapolis Water Works found corner and updated ties.

July 2, 1958 - Anoka County Highway Department found corner and updated ties.

April 11, 1962 - Found 1" iron pipe down 0.7'. Drove iron pipe down and set a cast iron monument on top, flush with the ground. Updated ties.

July 30, 1964 - Found cast iron monument and updated ties.

June 30, 1966 - Found cast iron monument and updated ties.

August 13, 1970 - Found cast iron monument broken off. Replaced broken monument with new cast iron monument up 0.1'± using the corner ties. Updated ties.

June 27, 1974 - Found cast iron monument and updated ties.

August 4, 1977 - Found cast iron monument and updated ties.

July 22, 1980 - Found cast iron monument and updated ties.

July 27, 1983 - Found cast iron monument and updated ties.

June 26, 1986 - Found cast iron monument and updated ties.

July 25, 1989 - Found cast iron monument and updated ties.

July 26, 1994 - Found cast iron monument and updated ties.

August 21, 2003 - Established NAD 1983 (1996 adj.) Anoka County project coordinates by static GPS methods.

September 30, 2008 - Found cast iron monument and updated ties.

November 4, 2014 - Found cast iron monument and updated ties.

December 19, 2019 - Found cast iron monument. Verified position by VRS GPS methods. Updated ties.

August 15, 2022 - Found cast iron monument flush. Verified position by VRS GPS methods. Updated ties.