

CERTIFICATE OF LOCATION OF GOVERNMENT CORNER

County of Anoka

State of Minnesota

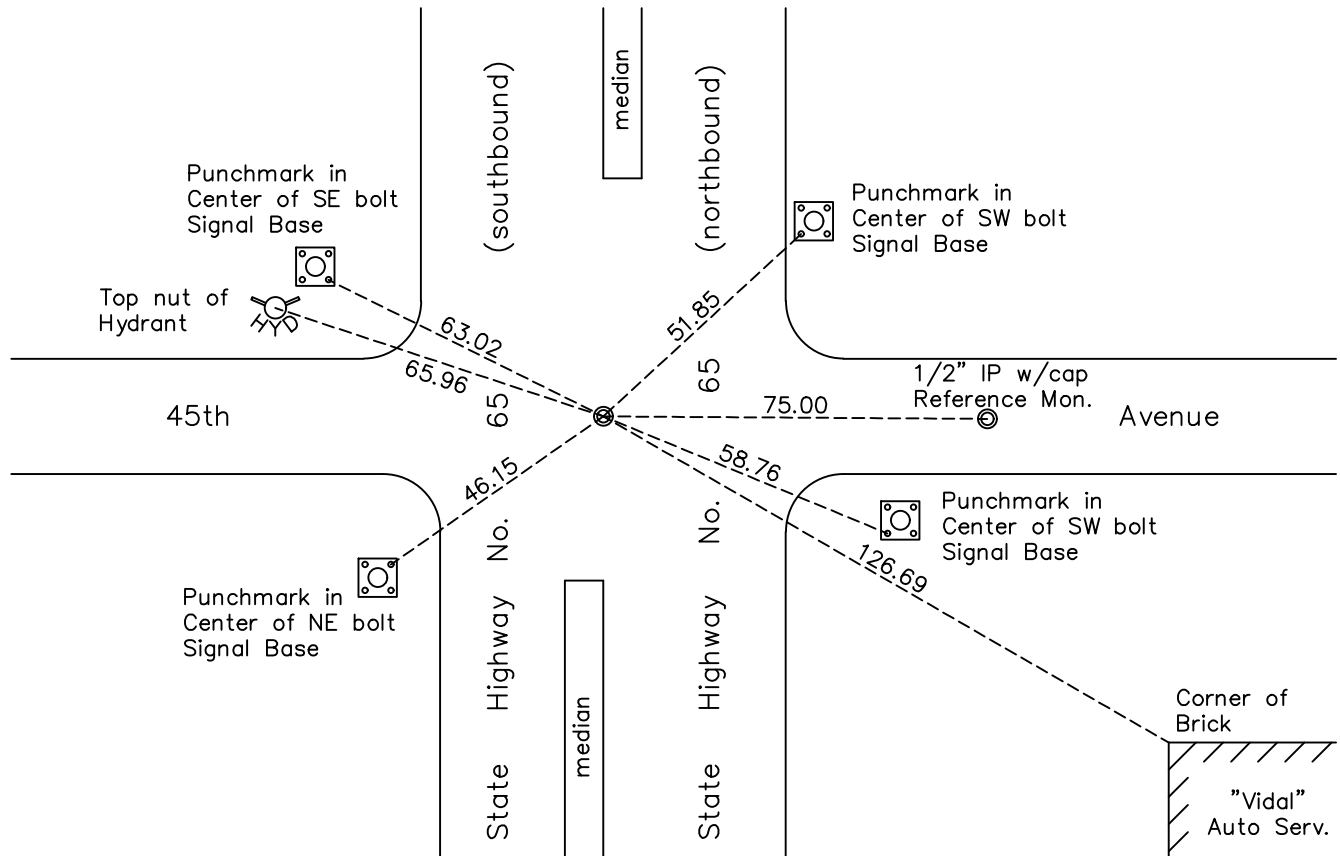
Northwest Corner of Sec. 36 Township 30 Range 24

On the 25th day of March, 1963, the described corner was evidenced by an 8" x 8" granite monument

and to perpetuate the location of said corner, at the exact location thereof, a permanent marker was placed consisting of a 1/2" iron pipe

AND on the 27th day of October, 2022, said permanent marker was not found. Set a 1/2" iron pipe w/cap flush using area resurvey. Verified position by VRS GPS methods. Updated ties.

Updated reference ties are as shown below.



N.A.D. 1983 Coordinates
(1996 Adjustment)

| County Project Coordinates | |
|----------------------------|-------------------|
| Northing | <u>105370.349</u> |
| Easting | <u>504974.996</u> |
| Date | <u>10/27/2022</u> |

I hereby certify that this United States public land survey monument record is correct and complete to the best of my knowledge and belief.

David Zieglmeier Date 12/11/23

David Zieglmeier, Anoka County Surveyor
Minnesota License Number 46179

Revision Date
10/27/22

REFERENCE MONUMENT FOR GOVERNMENT CORNER

Reference to County of Anoka State of Minnesota

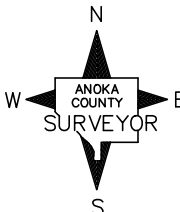
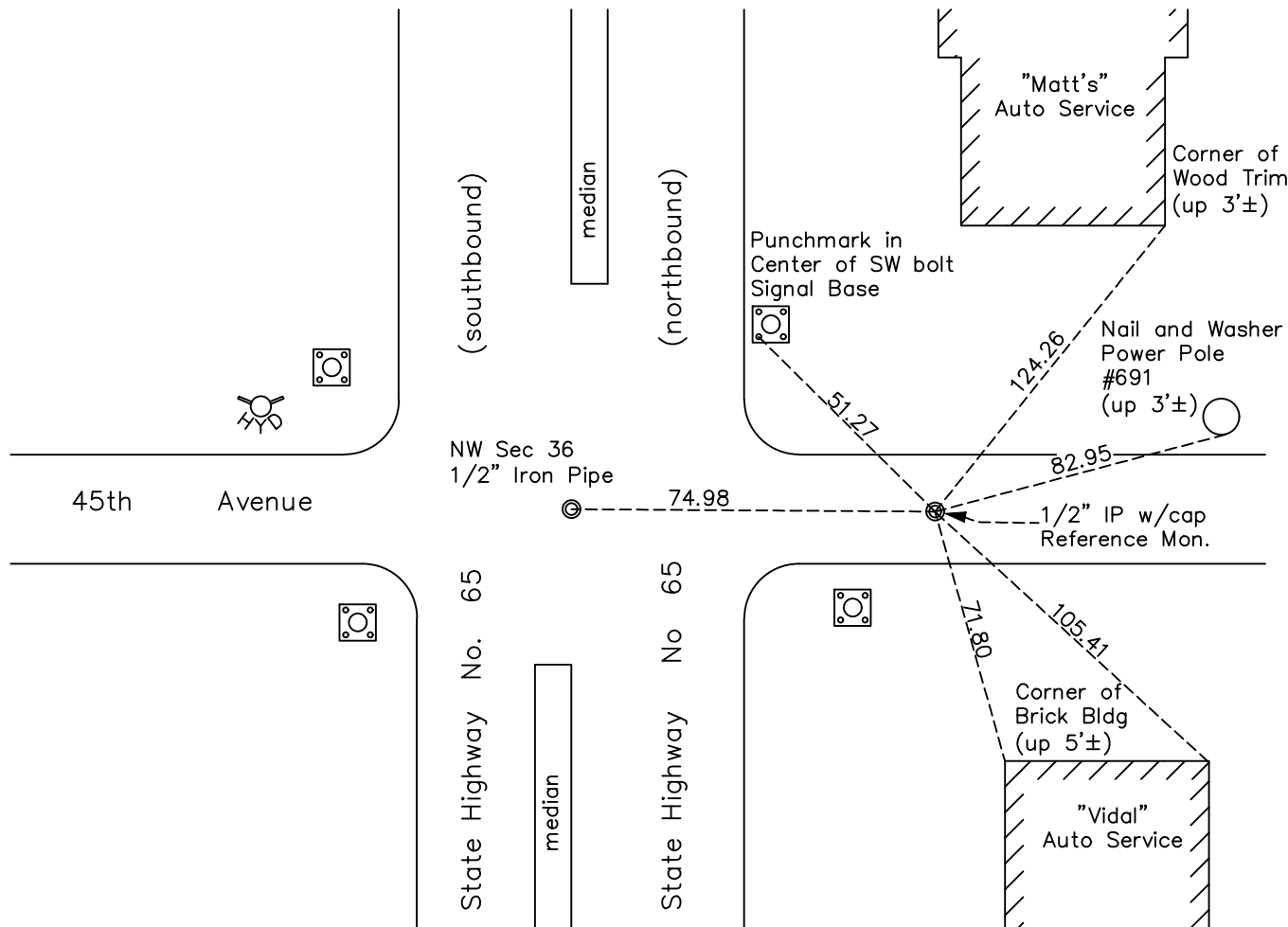
Northwest Corner of Sec. 36 Township 30 Range 24

On the 11th day of May, 2023, the described reference monument was evidenced by a computed position 75' easterly along the section line

and to reference the location of said corner, at the exact location thereof, a permanent marker was placed consisting of a 1/2" iron pipe w/ cap

AND on the 16th day of May, 2023, said permanent marker was set flush using RTK GPS method and ties were established to the reference monument

Updated reference ties are as shown below.



Revision Date
 8/30/2023

REFERENCE MONUMENT
 N.A.D. 1983 (2011 Adj.)

| County Project Coordinates | |
|----------------------------|------------|
| Northing | 105369.851 |
| Easting | 505049.994 |
| Date | 5/16/2023 |

HISTORY OF GOVERNMENT CORNER

Page No. 66

County of Anoka

State of Minnesota

Northwest Corner of Sec. 36 Township 30 Range 24

CORNER HISTORY:

June 27, 1944 - Harvey Cartwright found a chiseled 'X' in concrete on centerline of Central Avenue with a witness monument West 50' at 90 degrees. Updated ties to the 'X' chisel mark.

September 8, 1955 - MNDOT found the 'east edge of old cross'. Shown on MNDOT right-of-way map 1-16.

August 4, 1959 - Found 'X' chisel mark and updated ties.

April 11, 1962 - Set top of cast iron monument flush with road. Updated ties.

March 25, 1963 - Found top of cast iron monument and updated ties.

June 30, 1966 - Found top of cast iron monument and updated ties.

August 13, 1970 - Found top of cast iron monument and updated ties.

June 27, 1974 - Found top of cast iron monument and updated ties.

August 9, 1977 - Set top of cast iron monument flush using corner ties. Updated ties.

April 26, 1978 - Found cast iron monument top set in 1977 to be in wrong position. Reset cast iron monument using construction ties and old corner ties. Updated ties.

July 16, 1980 - Found cast iron monument and updated ties.

June 26, 1986 - Found cast iron monument and updated ties.

August 4, 1989 - Found cast iron monument and updated ties.

September 22, 1994 - Set 1/2" iron pipe after road construction and updated the ties.

October 27, 2022 - 1/2" iron pipe not found. Set a 1/2" iron pipe w/cap flush using area resurvey and the 1978 I-File #89 computations. Verified position by VRS GPS methods and updated the ties. A reference monument was set on May 16, 2023 (1/2" iron pipe w/cap flush) 75 feet to the east along the Section line between the NW corner of Section 36 and the north 1/4 corner of Section 36. Data can be found referencing survey project number 22-107.

Ties to existing Section Corners

2,623.29' from the east 1/4 corner of section 26 (1/2" IP)

2,633.66' from the north 1/4 corner of section 36 (CIM)

2,640.73' from the east 1/4 corner of section 35 (1/2" IP)

2,656.69' from the north 1/4 corner of section 35 (1/2" IP)