

CERTIFICATE OF LOCATION OF GOVERNMENT CORNER

County of Anoka

State of Minnesota

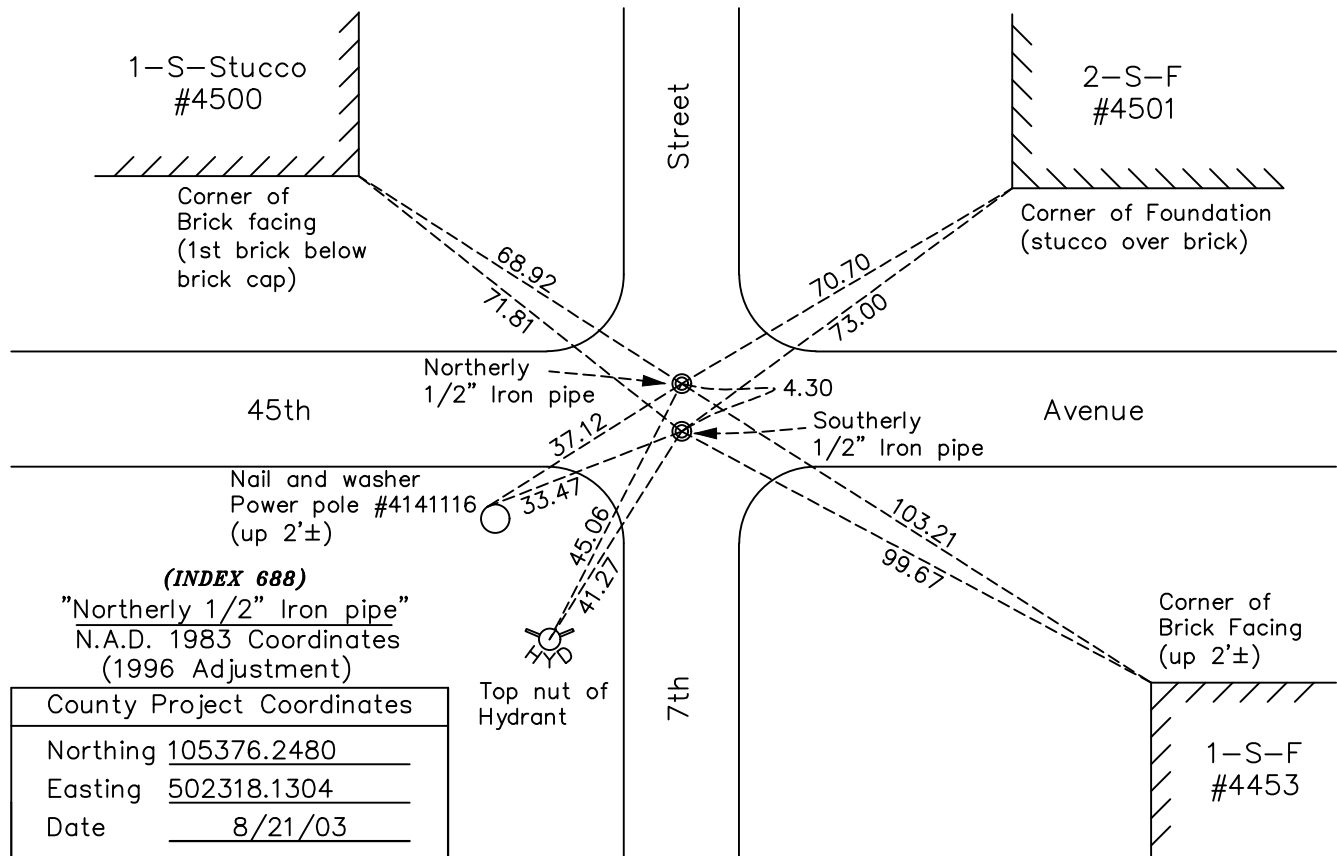
North $\frac{1}{4}$ Corner of Sec. 35 Township 30 Range 24

On the 22nd day of May, 1961, the described corner was evidenced by a spike

and to perpetuate the location of said corner, at the exact location thereof, a permanent marker was placed consisting of two 1/2" iron pipes. The north iron has been used for surveys to the North and the south iron has been used for surveys to the South.

AND on the 15th day of August, 2022, said permanent marker was found flush with North and South positions and the ties for the North and South positions were updated.

Updated reference ties are as shown below.

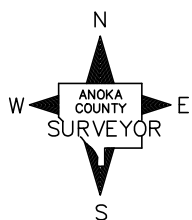


(INDEX 688)
 "Northerly 1/2" Iron pipe"
 N.A.D. 1983 Coordinates
 (1996 Adjustment)

County Project Coordinates	
Northing	105376.2480
Easting	502318.1304
Date	8/21/03

(INDEX 689)
 "Southerly 1/2" Iron pipe"
 N.A.D. 1983 Coordinates
 (1996 Adjustment)

County Project Coordinates	
Northing	105371.9570
Easting	502318.3027
Date	8/21/03



Revision Date
12/23/22

I hereby certify that this United States public land survey monument record is correct and complete to the best of my knowledge and belief.
David Zieglmeier Date 8/3/23
 David Zieglmeier Anoka County Surveyor
 Minnesota License Number 46179

HISTORY OF GOVERNMENT CORNER

Page No. 67

County of Anoka

State of Minnesota

North 1/4 Corner of Sec. 35 Township 30 Range 24

CORNER HISTORY:

July 14, 1943 - Harvey Cartwright found a concrete monument down 0.5' with the South 1/4 corner of Section 26 to the North 4.3 feet. Updated ties to concrete monument.

December 23, 1958 - Found South 1/4 corner of Section 26 T30 R24 4.3 feet North of the North 1/4 corner of Section 35 T30 R24. Updated ties to North 1/4 corner of Section 35 by Cartwright and Olson. Submitted by Minder Engineering Co.

May 22, 1961 - Found spike in centerline centerline of roads, used for the North 1/4 corner of Section 35. Found iron 4.3' North of spike used for the South 1/4 corner of Section 26. Updated ties to spike.

July 27, 1964 - Found spike and iron 4.3' North of spike. Updated ties to spike.

June 30, 1966 - Found spike and iron 4.3' North of spike. Updated ties to spike.

August 13, 1970 - Found spike missing due to construction. Found iron 4.3' to the North and established ties to the iron.

June 28, 1974 - Found spike and iron 4.3' North of spike. Updated ties to spike and iron.

August 4, 1977 - Found spike and iron 4.3' North of spike. Updated ties to spike and iron.

July 17, 1980 - Found spike and iron 4.3' North of spike. Updated ties to spike and iron.

June 26, 1986 - Found spike and iron 4.3' North of spike. Updated ties to spike and iron.

August 3, 1989 - Set two 1/2" iron pipes in both locations, Northerly iron used in surveys to the North and Southerly iron used in surveys to the South. Updated ties to both iron pipes.

July 26, 1994 - Found two 1/2" iron pipes and updated ties to both.

August 21, 2003 - Established NAD 1983 (1996 adj.) Anoka County project coordinates by static GPS methods.

September 23, 2008 - Found two 1/2" iron pipes and updated ties to both.

October 23, 2014 - Found two 1/2" iron pipes missing. Set two temporary P.K. nails using VRS GPS methods.

March 30, 2015 - Found two temporary P.K. nails and verified position by static GPS methods.

April 1, 2015 - Set two 1/2" iron pipes w/caps using static GPS methods. Verified positions with VRS GPS methods. Updated ties to both iron pipes.

December 19, 2019 - Found two 1/2" iron pipes. Verified positions by VRS GPS methods. Updated ties to both iron pipes.

August 15, 2022 - Found two 1/2" iron pipes. Verified positions by VRS GPS methods. Updated ties to both iron pipes.