

# CERTIFICATE OF LOCATION OF GOVERNMENT CORNER

County of Anoka

State of Minnesota

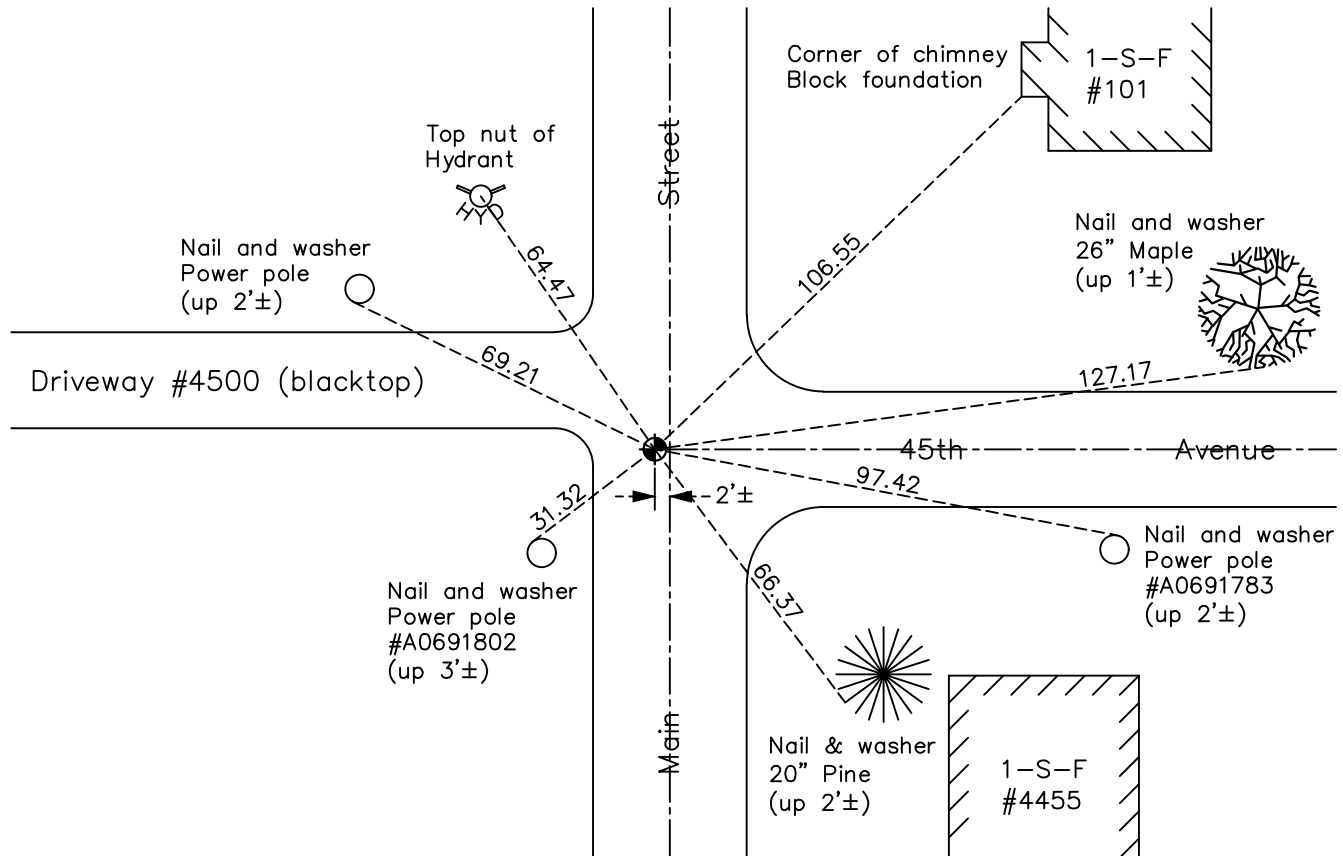
## Southeast Corner of Sec. 27 Township 30 Range 24

On the 28th day of July, 1961, the described corner was evidenced by area platting

and to perpetuate the location of said corner, at the exact location thereof, a permanent marker was placed consisting of a cast iron monument

AND on the 19th day of August, 2022, said permanent marker was found flush and the ties were updated.

Updated reference ties are as shown below.



Revision Date  
 12/23/22

N.A.D. 1983 Coordinates  
 (1996 Adjustment)

County Project Coordinates	
Northing	105368.2746
Easting	499653.8297
Date	8/18/03

I hereby certify that this United States public land survey monument record is correct and complete to the best of my knowledge and belief.  
*David Zieglermeier* Date 12/11/23  
 David Zieglermeier Anoka County Surveyor  
 Minnesota License Number 46179

# HISTORY OF GOVERNMENT CORNER

Page No. 68

County of Anoka

State of Minnesota

## Southeast Corner of Sec. 27 Township 30 Range 24

### **CORNER HISTORY:**

April 6, 1943 - Harvey Cartwright found a reference monument #1051 of the Minneapolis City Survey 7' West of the Section corner (10" diameter cast iron mnument). Updated ties to reference monument.

July 21, 1960 - Found cast iron monument down 4". Found Minneapolis City Survey reference monument 7 feet west of cast iron monument. Updated ties to cast iron monument.

July 27, 1961 - Found corner ties from 1960 not fitting. Completed area resurvey to establish Southeast Corner of Section 27 T30 R24.

July 28, 1961 - Set nail and washer using area platting. Updated ties.

July 30, 1964 - Found nail and washer and replaced with a cast iron monument. Updated ties.

June 29, 1966 - Found cast iron monument missing. Set a temporary P.K. nail using corner ties. Updated ties.

July 8, 1966 - Found temporary P.K. nail and replaced with a cast iron monument. Updated ties.

August 19, 1970 - Found cast iron monument and updated ties.

June 28, 1974 - Found cast iron monument and updated ties.

October 6, 1975 - Found cast iron monument down and raised flush.

August 5, 1977 - Found cast iron monument and updated ties.

July 17, 1980 - Found cast iron monument and updated ties.

August 1, 1989 - Found cast iron monument and updated ties.

April 13, 1995 - Found cast iron monument and updated ties.

May 10, 1995 - Reset cast iron monument after road construction and updated ties.

August 18, 2003 - Established NAD 1983 (1996 adj.) Anoka County project coordinates by static GPS methods.

September 23, 2008 - Found cast iron monument and updated ties.

October 23, 2014 - Found cast iron monument. Verified position by VRS GPS methods. Updated ties.

June 12, 2019 - Updated construction ties and removed CIM prior to road construction

April 7, 2020 - Reset with a cast iron monument, set flush to surface, after road construction using static GPS methods and the ties were updated

August 19, 2022 - Found cast iron monument. Verified position by VRS GPS methods. Updated ties.