

CERTIFICATE OF LOCATION OF GOVERNMENT CORNER

County of Anoka

State of Minnesota

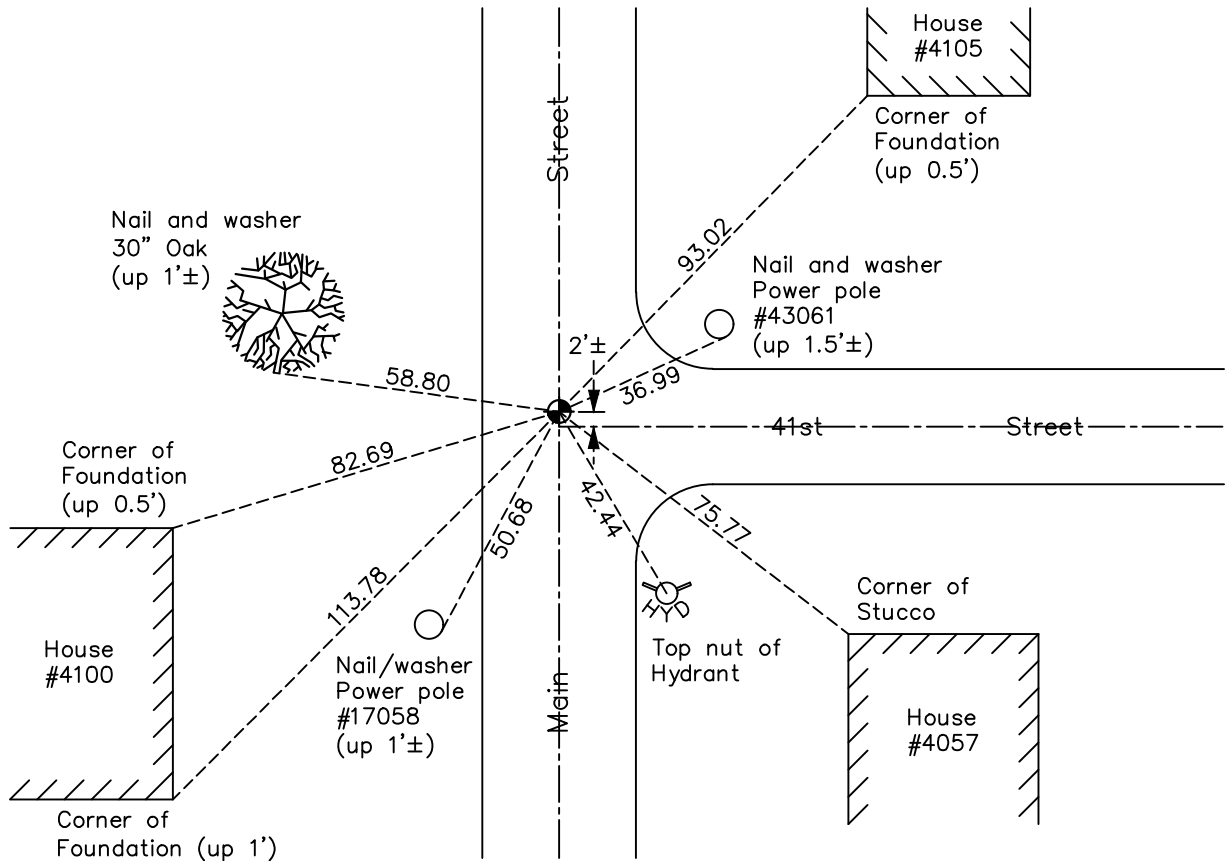
East 1/4 Corner of Sec. 34 Township 30 Range 24

On the 31st day of July, 1961, the described corner was evidenced by a spike

and to perpetuate the location of said corner, at the exact location thereof, a permanent marker was placed consisting of a cast iron monument

AND on the 8th day of August, 2022, said permanent marker was found flush and the ties were updated.

Updated reference ties are as shown below.



Revision Date

12/23/22

N.A.D. 1983 Coordinates
(1996 Adjustment)

County Project Coordinates	
Northing	<u>102731.8536</u>
Easting	<u>499695.3450</u>
Date	<u>8/18/03</u>

I hereby certify that this United States public land survey monument record is correct and complete to the best of my knowledge and belief.

David Zieglmeier Date 12/11/23

David Zieglmeier Anoka County Surveyor
Minnesota License Number 46179

HISTORY OF GOVERNMENT CORNER

Page No. 71

County of Anoka

State of Minnesota

East 1/4 Corner of Sec. 34 Township 30 Range 24

CORNER HISTORY:

April 10, 1943 - Cartwright found cast iron monument

July 31, 1961 - Found spike set by Co. Hwy Dept. Established ties to monument.

March 24, 1964- Found spike and updated ties.

June 28, 1966 - Found spike and updated ties.

July 18, 1966 - Set cast iron monument with P.K. spike 2.00' north and east. Updated ties.

August 12, 1970 - Found cast iron monument and updated ties.

June 28, 1974 - Found cast iron monument and updated ties.

August 5, 1977 - Found cast iron monument and updated ties.

July 17, 1980 - Found cast iron monument and updated ties.

July 29, 1983 - Found cast iron monument and updated ties.

June 24, 1986 - Found cast iron monument and updated ties.

February 9, 1989 - Found cast iron monument and updated ties.

July 26, 1994 - Found cast iron monument and updated ties.

September 23, 2008 - Found cast iron monument and updated ties.

October 22, 2014 - Found cast iron monument and updated ties.

May 17, 2017 - Set construction ties and removed cast iron monument prior to road construction.

August 30, 2018 - Set cast iron monument flush after road construction using construction ties. Verified location of corner by Static GPS methods. Updated ties.

December 23, 2019 - Found cast iron monument flush. Verified position by VRS GPS methods. Updated ties.

August 8, 2022 - Found cast iron monument flush. Verified position by VRS GPS methods. Updated ties.