

CERTIFICATE OF LOCATION OF GOVERNMENT CORNER

County of Anoka

State of Minnesota

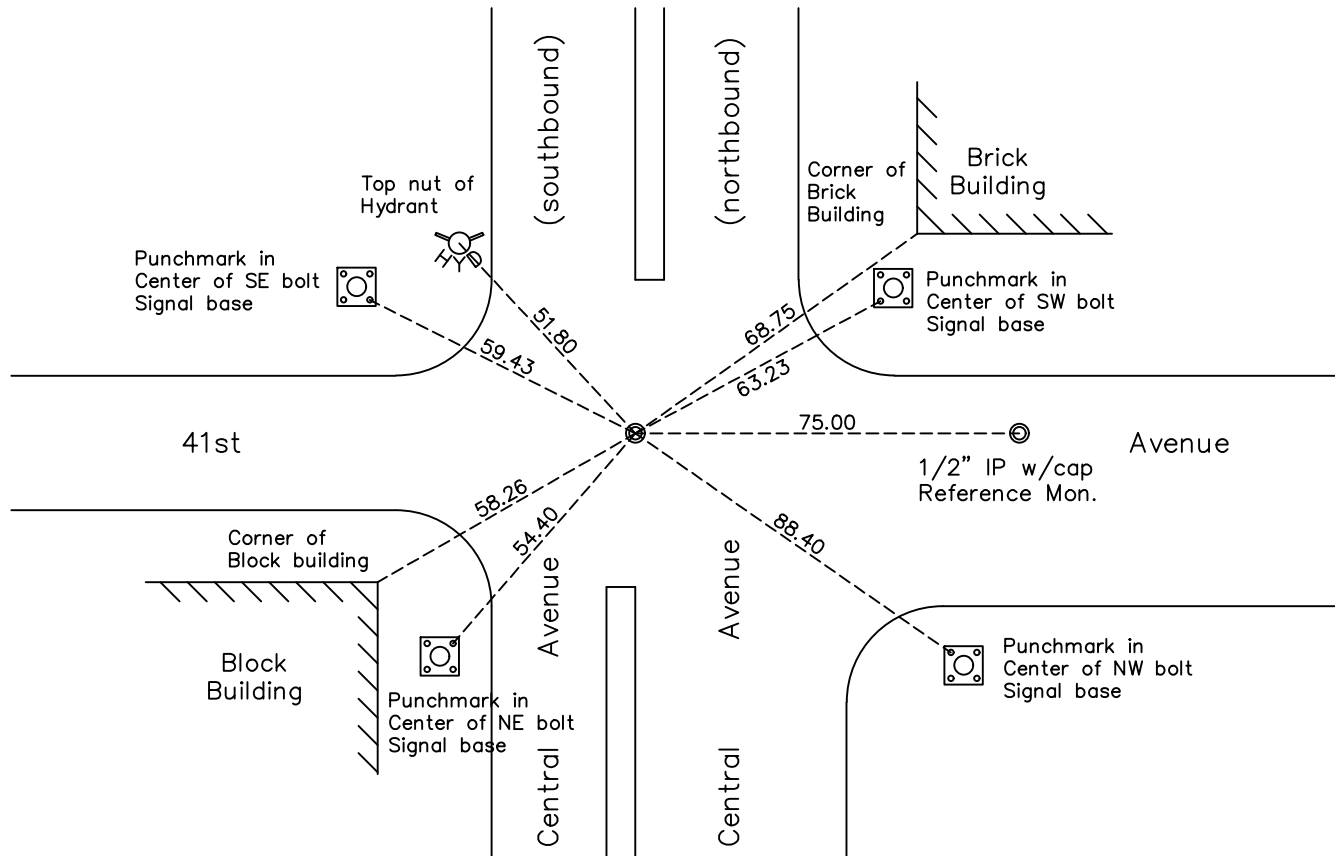
East 1/4 Corner of Sec. 35 Township 30 Range 24

On the 25th day of May, 1978, the described corner was evidenced by a brass plug set by MNDOT

and to perpetuate the location of said corner, at the exact location thereof, a permanent marker was placed consisting of the same brass plug under blacktop

AND on the 27th day of October, 2022, said permanent marker was not found. Set a 1/2" iron pipe w/cap flush using area resurvey. Verified position by VRS GPS methods. Updated ties.

Updated reference ties are as shown below.



Revision Date
 10/27/22

N.A.D. 1983 Coordinates
 (1996 Adjustment)

County Project Coordinates	
Northing	<u>102729.688</u>
Easting	<u>504994.558</u>
Date	<u>10/27/2022</u>

I hereby certify that this United States public land survey monument record is correct and complete to the best of my knowledge and belief.

David Zieglmeier Date 12/11/23

David Zieglmeier, Anoka County Surveyor
 Minnesota License Number 46179

REFERENCE MONUMENT FOR GOVERNMENT CORNER

Reference to County of Anoka State of Minnesota

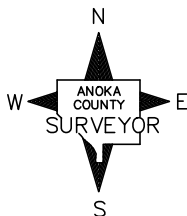
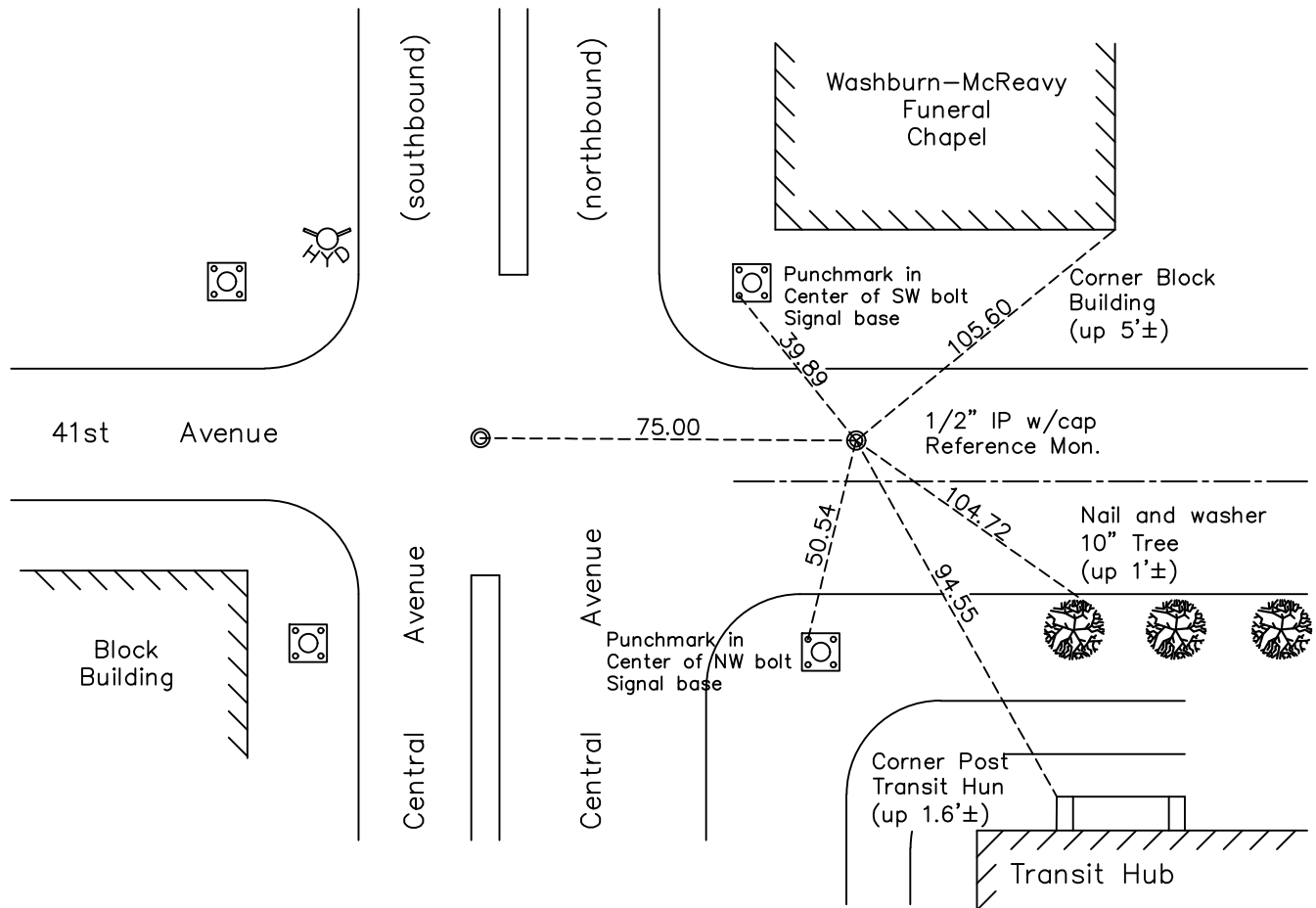
East 1/4 Corner of Sec. 35 Township 30 Range 24

On the 11th day of May, 2023, the described reference monument was evidenced by a computed position 75' easterly along the section line

and to reference the location of said corner, at the exact location thereof, a permanent marker was placed consisting of a 1/2" iron pipe w/ cap

AND on the 11th day of May, 2023, said permanent marker was set flush using RTK GPS method and ties were established to the reference monument

Updated reference ties are as shown below.



REFERENCE MONUMENT
 N.A.D. 1983 (2011 Adj.)

Revision Date

8/30/2023

County Project Coordinates	
Northing	102729.688
Easting	505069.558
Date	5/16/2023

HISTORY OF GOVERNMENT CORNER

Page No. 72

County of Anoka

State of Minnesota

East 1/4 Corner of Sec. 35 Township 30 Range 24

CORNER HISTORY:

May 25, 1978 - Found brass plug set by Minnesota Highway Department. Updated ties

July 16, 1980 - Found brass plug and updated ties.

August 4, 1989 - Found brass plug and updated ties

October 24, 1990 - Found brass plug under blacktop

October 27, 2022 - Brass plug not found. Set a 1/2" iron pipe w/cap flush using three remaining corner ties. Verified position by VRS GPS methods and updated the ties. A reference monument was set on May 11, 2023 (1/2" iron pipe w/cap flush) 75 feet East of the east 1/4 corner of Section 35 (cardinally). Data can be found referencing survey project number 22-107.

Ties to existing Section Corners

2,640.73' from the NW corner of Section 36 (1/2" IP)

2,628.10' from the SE corner of Section 35 (Concrete w/brass plug)