

# CERTIFICATE OF LOCATION OF GOVERNMENT CORNER

County of Anoka

State of Minnesota

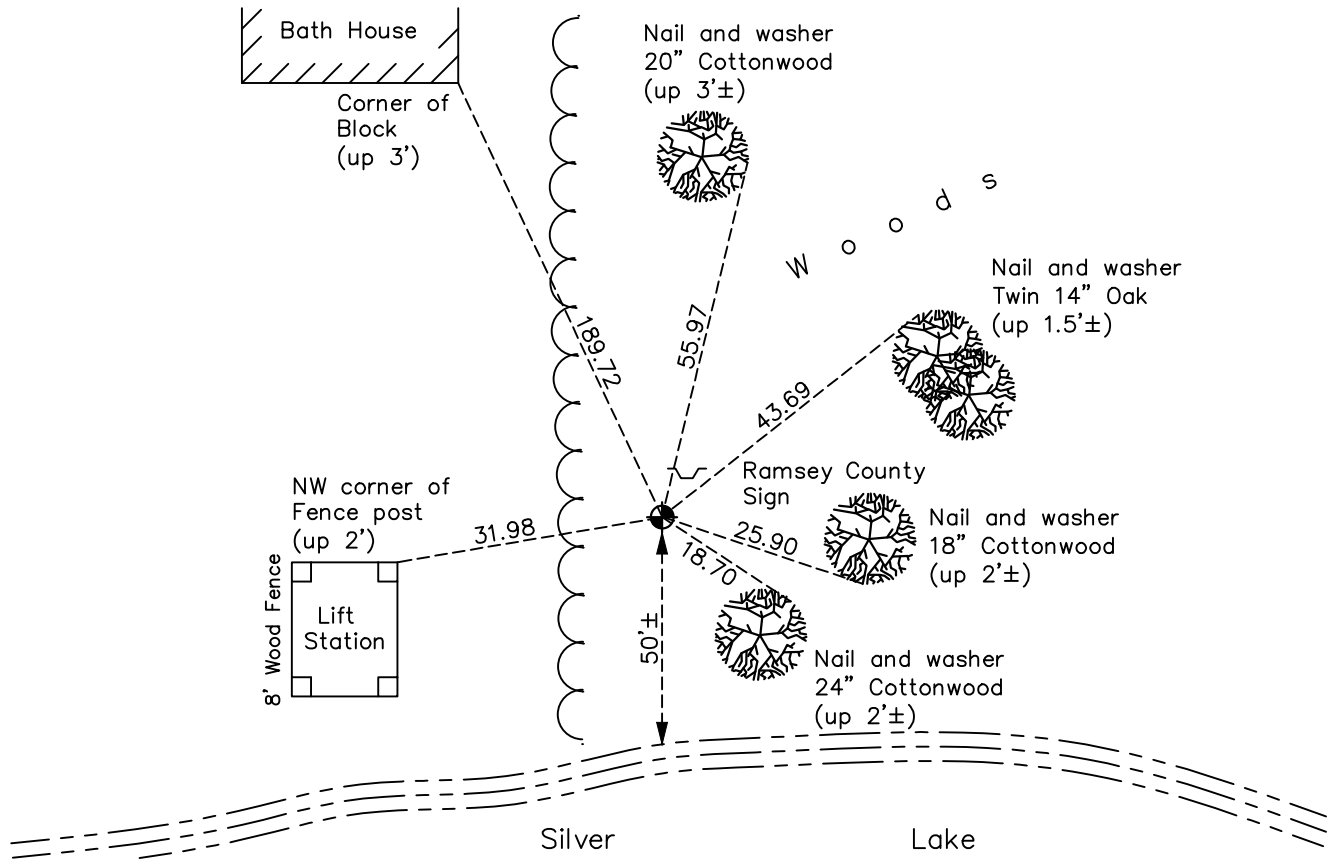
Witness Corner of Sec. 36 Township 30 Range 24  
(on east line of section)

On the 13th day of August, 1960, the described corner was evidenced by an 8"X8"  
granite monument

and to perpetuate the location of said corner, at the exact location thereof, a permanent marker  
was placed consisting of a cast iron monument with a Ramsey County sign 1' North  
and 0.5' East

AND on the 15th day of August, 2022, said permanent marker was found down 0.2'± and  
the ties ties were updated

Updated reference ties are as shown below.



Revision Date  
12/23/22

N.A.D. 1983 Coordinates  
 (1996 Adjustment)

County Project Coordinates	
Northing	<u>103878.4654</u>
Easting	<u>510252.5343</u>
Date	<u>1/04/05</u>

I hereby certify that this United States public land survey monument record is correct and complete to the best of my knowledge and belief.  
David Zieglmeier Date 12/11/23  
 David Zieglmeier Anoka County Surveyor  
 Minnesota License Number 46179

# HISTORY OF GOVERNMENT CORNER

Page No. 74

County of Anoka

State of Minnesota

Witness Corner of Sec. 36 Township 30 Range 24  
(on east line of section)

## **CORNER HISTORY:**

April 8, 1943 - Harvey Cartwright found a 8" x 8" granite monument flush and updated the ties.

September 13, 1960 - Found granite monument with drill hole in top and updated ties.

May 3, 1961 - Found granite monument and updated ties.

July 30, 1964 - Found granite monument and updated ties.

June 28, 1966 - Found granite monument and updated ties.

June 12, 1969 - Found granite monument leaning south and updated ties.

August 12, 1970 - Found granite monument and updated ties.

June 28, 1974 - Found granite monument and updated ties.

September 20, 1976 - Found granite monument and updated ties.

April 12, 1977 - Found granite monument removed for construction. Replaced with a cast iron monument flush using the two shortest corner ties. Updated ties.

August 5, 1977 - Found cast iron monument and updated ties.

July 18, 1980 - Found cast iron monument and updated ties.

June 26, 1986 - Found cast iron monument and updated ties.

July 13, 1989 - Found cast iron monument and updated ties.

July 26, 1989 - Found cast iron monument and updated ties.

July 26, 1994 - Found cast iron monument and updated ties.

January 4, 2005 - Established NAD 1983 (1996 adj.) Anoka County project coordinates by static GPS methods.

September 30, 2008 - Found cast iron monument and updated ties.

November 4, 2014 - Found cast iron monument and updated ties.

December 19, 2019 - Found cast iron monument. Verified position by VRS GPS methods. Updated ties.

August 15, 2022 - Found cast iron monument down 0.2'±. Verified position by VRS GPS methods. Updated ties.