

CERTIFICATE OF LOCATION OF GOVERNMENT CORNER

County of Anoka

State of Minnesota

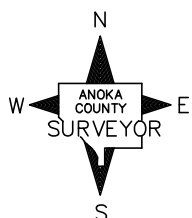
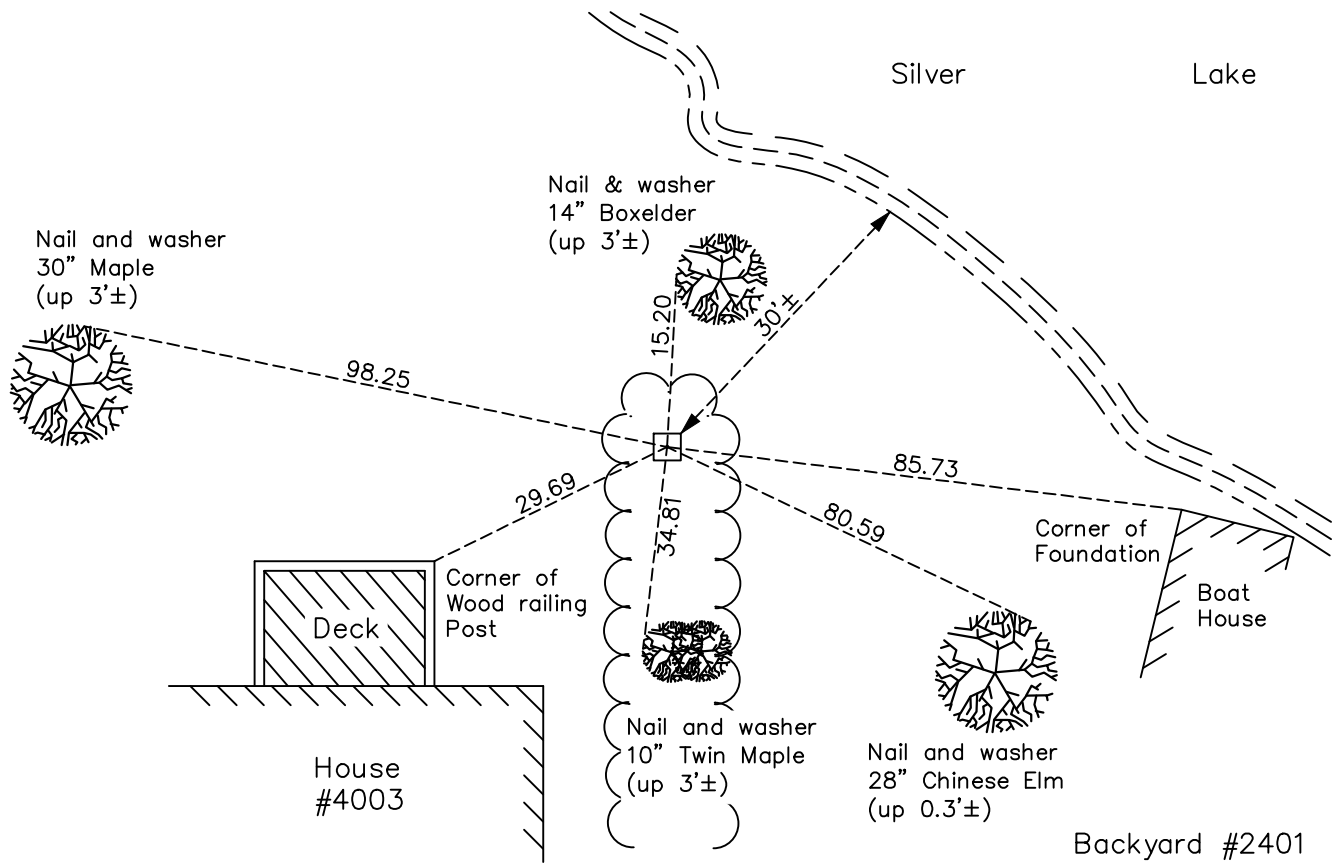
Meander Corner of Sec. 36 Township 30 Range 24 (on south side of Silver Lake)

On the 8th day of July, 1960, the described corner was evidenced by a granite
monument

and to perpetuate the location of said corner, at the exact location thereof, a permanent marker
was placed consisting of the same granite monument

AND on the 19th day of August, 2022, said permanent marker was found up 0.1'± and
the ties were updated

Updated reference ties are as shown below.



Revision Date
12/27/22

N.A.D. 1983 Coordinates
 (1996 Adjustment)

County Project Coordinates	
Northing	<u>102446.2662</u>
Easting	<u>510259.7420</u>
Date	<u>1/04/05</u>

I hereby certify that this United States public land survey monument record is correct and complete to the best of my knowledge and belief.
David Zieglmeier Date 12/11/23
 David Zieglmeier Anoka County Surveyor
 Minnesota License Number 46179

HISTORY OF GOVERNMENT CORNER

Page No. 75

County of Anoka

State of Minnesota

Meander Corner of Sec. 36 Township 30 Range 24 (on south side of Silver Lake)

CORNER HISTORY:

April 8, 1943 - Harvey Cartwright found a 8" x 8" granite monument flush and updated the ties.

July 8, 1960 - Found 8" x 8" granite monument flush with an iron on the North side. Updated ties.

May 15, 1964 - Found granite monument and updated ties.

June 28, 1966 - Found granite monument and updated ties.

August 13, 1970 - Found granite monument and updated ties.

June 28, 1974 - Found granite monument and updated ties.

August 5, 1977 - Found granite monument and updated ties.

July 22, 1980 - Found granite monument and updated ties.

July 27, 1983 - Found granite monument and updated ties.

June 26, 1986 - Found granite monument and updated ties.

August 2, 1989 - Found granite monument and updated ties.

August 7, 1994 - Found granite monument and updated ties.

January 4, 2005 - Established NAD 1983 (1996 adj.) Anoka County project coordinates by static GPS methods.

October 8, 2008 - Found granite monument and updated ties.

November 4, 2014 - Found granite monument and updated ties.

December 23, 2019 - Found granite monument. Verified position by VRS GPS methods. Updated ties.

August 19, 2022 - Found granite monument. Verified position by VRS GPS methods. Updated ties.