

# CERTIFICATE OF LOCATION OF GOVERNMENT CORNER

County of Anoka

State of Minnesota

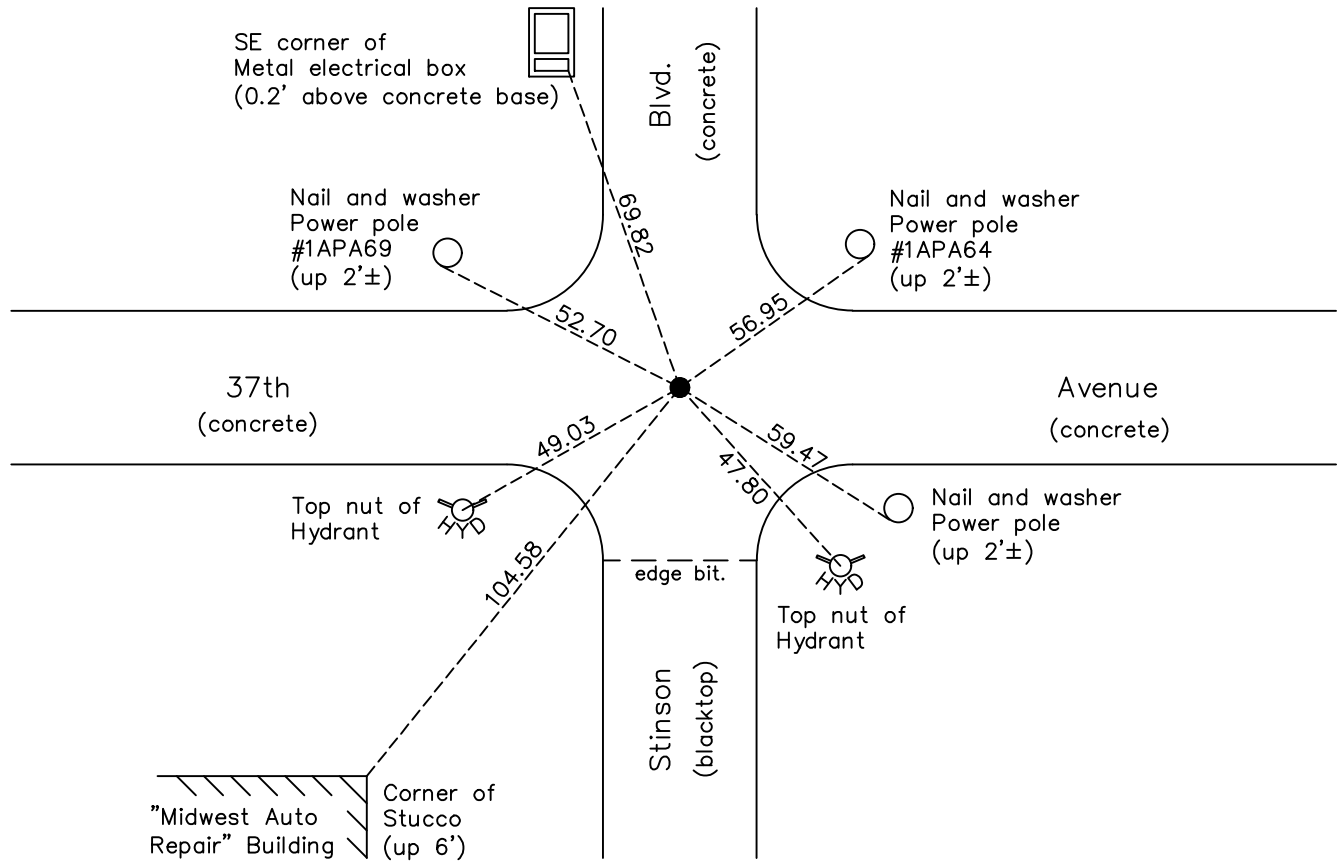
## Southeast Corner of Sec. 36 Township 30 Range 24

On the 10th day of April, 1943, the described corner was evidenced by a brass plug

and to perpetuate the location of said corner, at the exact location thereof, a permanent marker was placed consisting of the same brass plug in concrete (down 0.5')

AND on the 19th day of September, 2022, said permanent marker was found down 0.5'± in broken concrete, and the ties were updated

Updated reference ties are as shown below.



N.A.D. 1983 Coordinates  
(1996 Adjustment)

County Project Coordinates	
Northing	100146.6700
Easting	510272.0496
Date	7/13/04

I hereby certify that this United States public land survey monument record is correct and complete to the best of my knowledge and belief.

*David Zieglmeier* Date 6/28/23

David Zieglmeier Anoka County Surveyor  
Minnesota License Number 46179

Revision Date  
12/27/22

# HISTORY OF GOVERNMENT CORNER

Page No. 76

County of Anoka

State of Minnesota

## Southeast Corner of Sec. 36 Township 30 Range 24

### **CORNER HISTORY:**

April 8, 1943 - Harvey Cartwright found a brass plug down 8" in a concrete road and updated the ties.

September 14, 1960 - Found brass plug in concrete with an 'X' mark on top. Updated ties.

May 15, 1964 - Found brass plug and updated ties.

June 28, 1966 - Found brass plug down in covered tube at intersection of roads. Updated ties.

August 12, 1970 - Found brass plug down in covered tube at intersection of roads. Updated ties.

June 19, 1974 - Found brass plug down in covered tube at intersection of roads. Updated ties.

August 8, 1977 - Found brass plug down in covered tube at intersection of roads. Updated ties.

July 21, 1980 - Found brass plug down in covered tube at intersection of roads. Updated ties.

August 3, 1989 - Found brass plug down in covered tube at intersection of roads. Updated ties.

July 25, 1994 - Found brass plug down in covered tube at intersection of roads. Updated ties.

July 13, 2004 - Established NAD 1983 (1996 adj.) Anoka County project coordinates by static GPS methods.

September 30, 2008 - Found brass plug in concrete down 1'±. Updated ties.

November 3, 2014 - Found brass plug in concrete down 1'±. Verified position by VRS GPS methods. Updated ties.

September 19, 2022 - Found brass plug in concrete down 0.5'±. Verified position by VRS GPS methods. Updated ties.