

CERTIFICATE OF LOCATION OF GOVERNMENT CORNER

County of Anoka

State of Minnesota

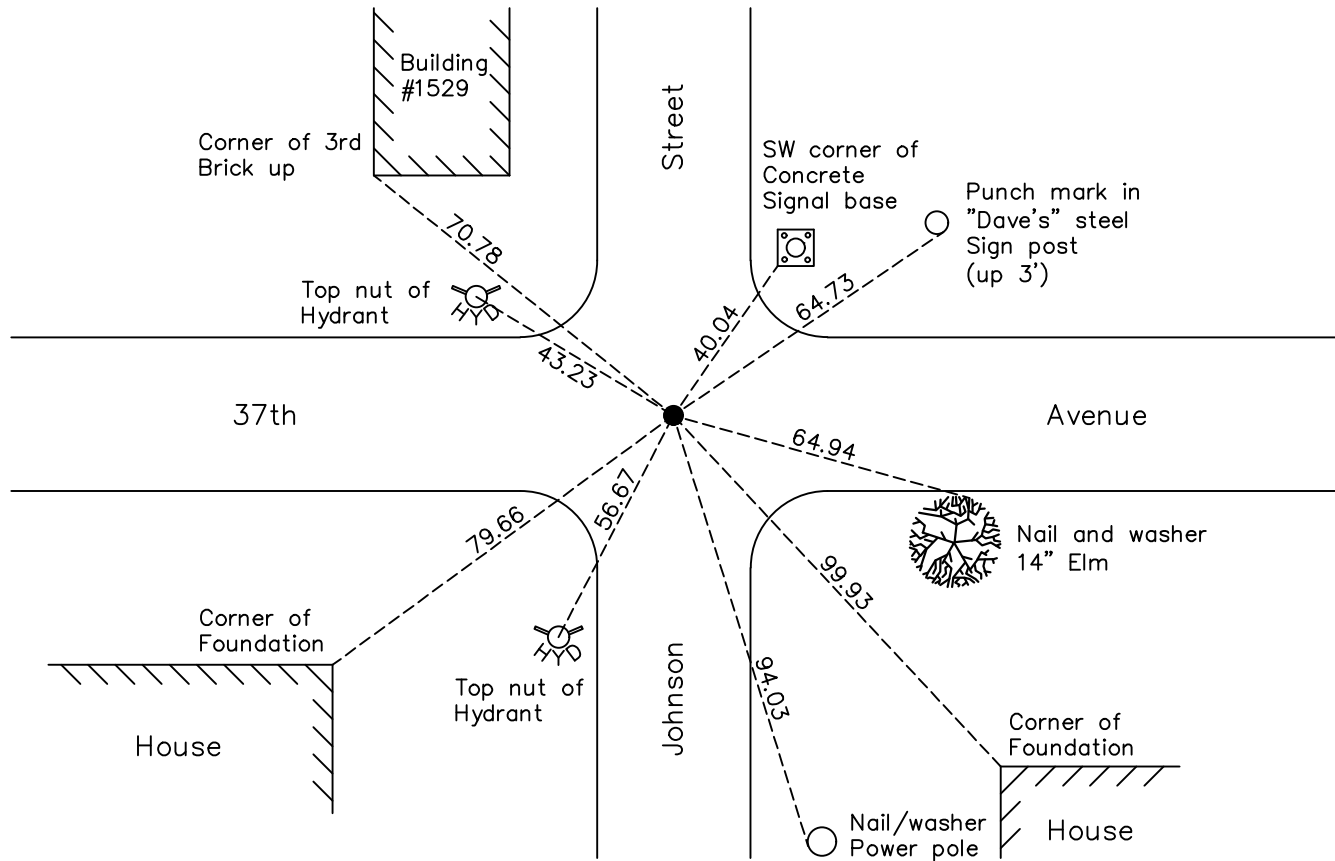
South 1/4 Corner of Sec. 36 Township 30 Range 24

On the 25th day of May, 1978, the described corner was evidenced by a brass plate in concrete

and to perpetuate the location of said corner, at the exact location thereof, a permanent marker was placed consisting of the same brass plate in concrete set in hole down 0.5' with steel cover

AND on the 19th day of August, 2022, said permanent marker was found. The ties were unable to be updated because the covered tube was crooked and covering monument.

Updated reference ties are as shown below.



Revision Date

12/27/22

N.A.D. 1983 Coordinates
(1996 Adjustment)

County Project Coordinates	
Northing	<u>100123.9263</u>
Easting	<u>507639.4979</u>
Date	<u>7/13/04</u>

I hereby certify that this United States public land survey monument record is correct and complete to the best of my knowledge and belief.

David Zieglmeier Date 6/28/23

David Zieglmeier Anoka County Surveyor
Minnesota License Number 46179

HISTORY OF GOVERNMENT CORNER

Page No. 77

County of Anoka

State of Minnesota

South 1/4 Corner of Sec. 36 Township 30 Range 24

CORNER HISTORY:

May 25, 1978 - Found concrete monument with a brass disc set down 0.5'± in a covered tube. Updated ties.

July 21, 1980 - Found concrete monument with a brass disc set down 0.5'± in a covered tube. Updated ties.

May 23, 1986 - Found concrete monument with a brass disc set down 0.5'± in a covered tube. Added additional corner ties prior to road construction.

October 21, 1986 - Reset concrete monument with brass disc down 0.5'± in a covered tube after construction. Updated ties.

August 1, 1989 - Found concrete monument with a brass disc set down 0.5'± in a covered tube. Updated ties.

July 25, 1994 - Found concrete monument with a brass disc set down 0.5'± in a covered tube. Updated ties.

July 13, 2004 - Established NAD 1983 (1996 adj.) Anoka County project coordinates by static GPS methods.

October 1, 2008 - Found concrete monument with a brass disc set down 0.5'± in a covered tube. Updated ties.

November 3, 2014 - Found monument with covered tube disturbed and leaning over monument. Unable to update corner ties.

December 20, 2019 - Found monument with covered tube disturbed and leaning over monument. Unable to update corner ties.

August 19, 2022 - Found monument with covered tube disturbed and leaning over monument. Unable to update corner ties. Verified position by VRS GPS methods.