

CERTIFICATE OF LOCATION OF GOVERNMENT CORNER

County of Anoka

State of Minnesota

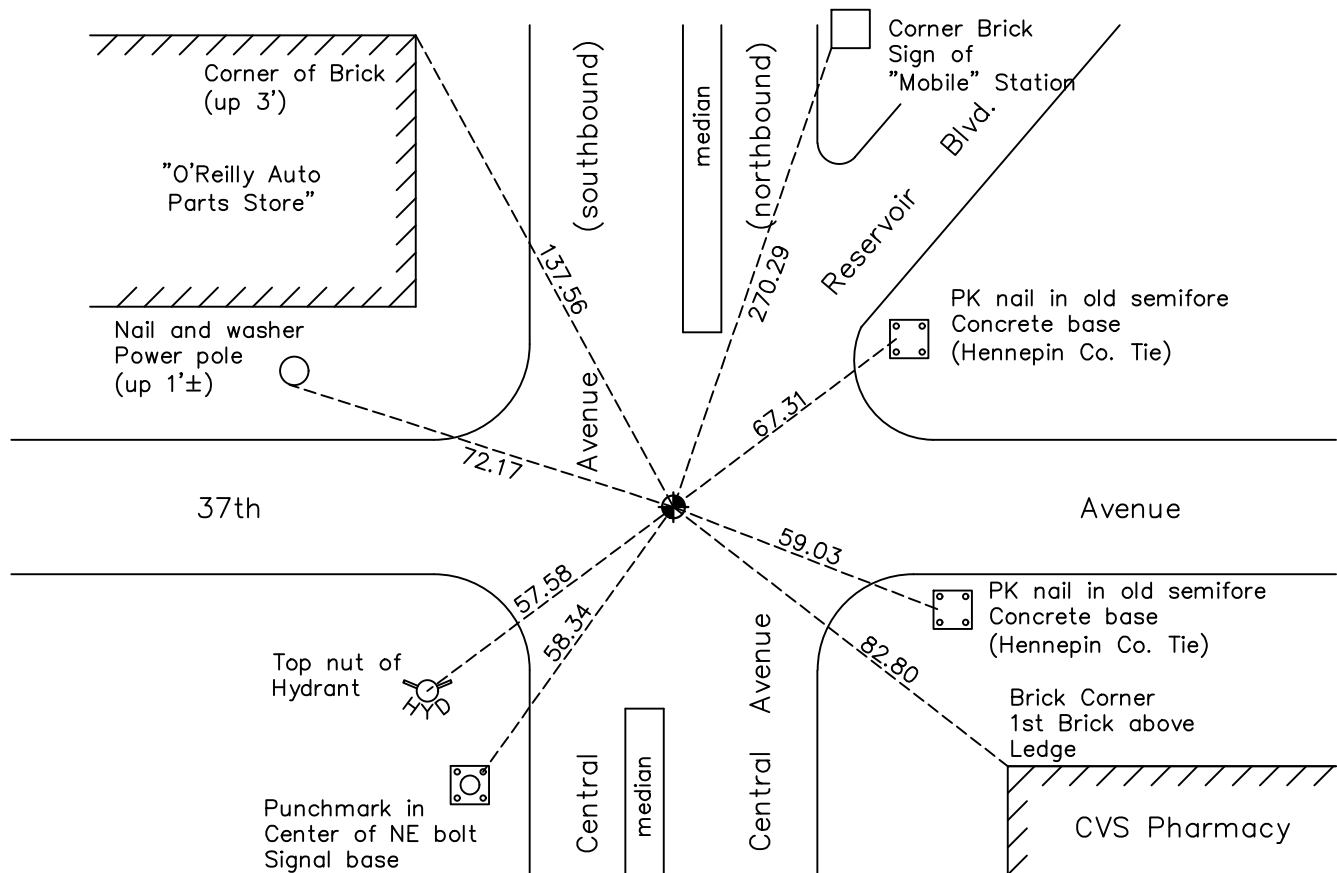
Southeast Corner of Sec. 35 Township 30 Range 24

On the 5th day of May, 1978, the described corner was evidenced by a concrete monument

and to perpetuate the location of said corner, at the exact location thereof, a permanent marker was placed consisting of the same concrete monument with a brass plug (Hennepin Co. monument)

AND on the 13th day of July, 2023, said permanent marker was reset by filling found tube with compacted sand, set 6" CIM in concrete flush w roadway. Verified and updated ties after setting.

Updated reference ties are as shown below.



Revision Date
 8/30/2023

N.A.D. 1983 Coordinates
 (2011 Adjustment)

County Project Coordinates	
Northing	100101.647
Easting	505011.821
Date	8/3/2022

I hereby certify that this United States public land survey monument record is correct and complete to the best of my knowledge and belief.

David Zieglmeier Date 12/11/23

David Zieglmeier, Anoka County Surveyor
 Minnesota License Number 46179

HISTORY OF GOVERNMENT CORNER

Page No. 78

County of Anoka

State of Minnesota

Southeast Corner of Sec. 35 Township 30 Range 24

CORNER HISTORY:

September 8, 1955 - MNDOT found a 'Minneapolis Monument'. Shown on MNDOT right-of-way map 1-16.

May 25, 1978 - Found concrete monument with brass disc set down 1.5'± in a covered tube. Updated ties.

July 16, 1980 - Found concrete monument with brass disc set down 1.5'± in a covered tube. Updated ties.

July 27, 1983 - Found concrete monument with brass disc set down 1.5'± in a covered tube. Updated ties.

June 24, 1986 - Found concrete monument with brass disc set down 1.5'± in a covered tube. Updated ties.

August 4, 1989 - Found concrete monument with brass disc set down 1.5'± in a covered tube. Updated ties.

October 24, 1990 - Found concrete monument with brass disc set down 1.5'± in a covered tube. Updated ties.

July 25, 1994 - Found concrete monument with brass disc set down 1.5'± in a covered tube. Updated ties.

January 2, 2020 - Found monument down 2'± in covered tube. Unable to remove sediment and water to update corner ties.

August 3, 2022 - Found concrete monument with brass plug down 2'± under water and sediment. Verified position by VRS GPS methods and updated the ties. Survey Job 22-107

July 13, 2023 - Filled found tube with compacted sand and set 6" cast iron monument in concrete, flush with roadway, using RTK GPS method. Verified and updated ties after monument was set.