

# CERTIFICATE OF LOCATION OF GOVERNMENT CORNER

County of Anoka

State of Minnesota

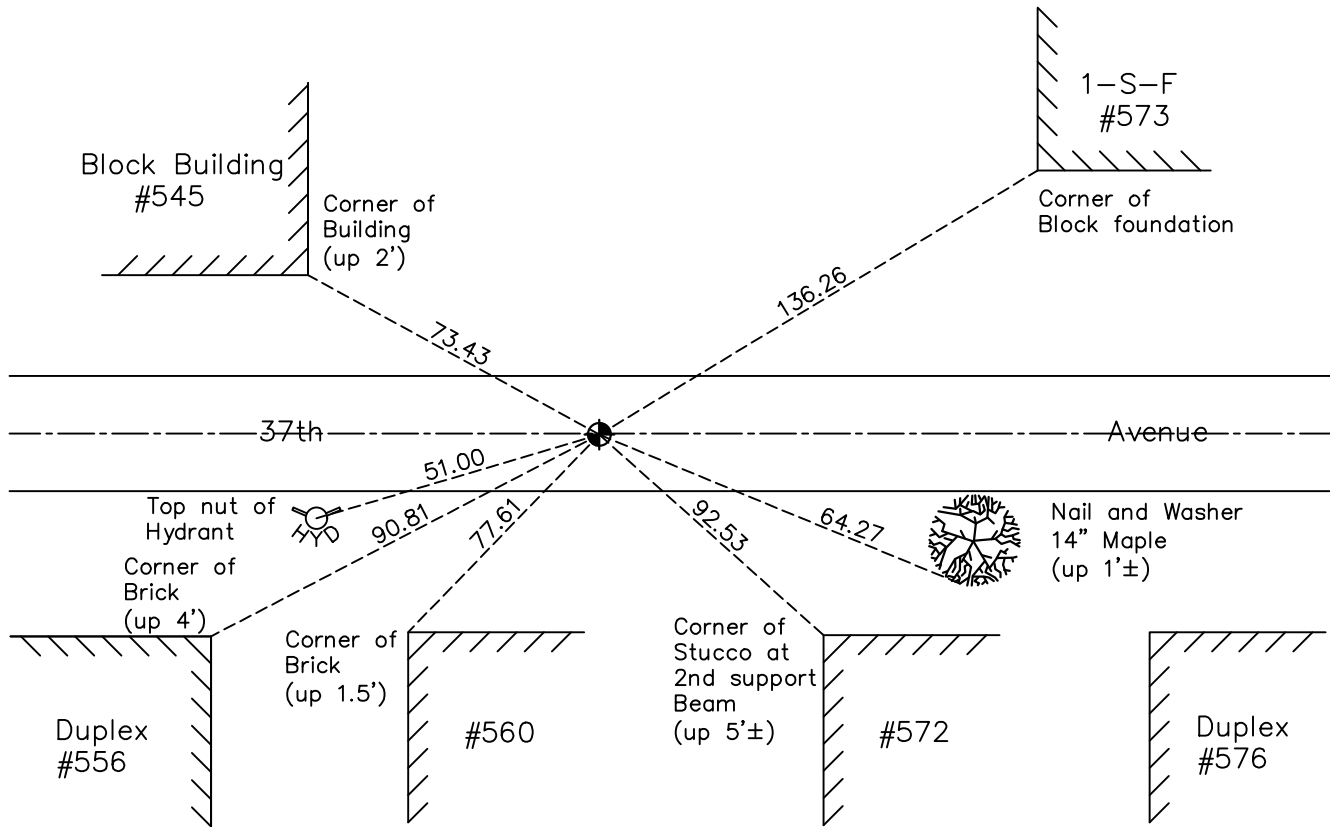
## South $\frac{1}{4}$ Corner of Sec. 35 Township 30 Range 24

On the 24th day of August, 1978, the described corner was evidenced by a brass cap

and to perpetuate the location of said corner, at the exact location thereof, a permanent marker was placed consisting of a cast iron monument

AND on the 19th day of September, 2022, said permanent marker was found flush and the ties were updated.

Updated reference ties are as shown below.



Revision Date  
12/27/22

N.A.D. 1983 Coordinates  
 (1996 Adjustment)

County Project Coordinates	
Northing	<u>100098.7189</u>
Easting	<u>502355.0631</u>
Date	<u>8/21/03</u>

I hereby certify that this United States public land survey monument record is correct and complete to the best of my knowledge and belief.  
*David Zieglmeier* Date 12/11/23  
 David Zieglmeier Anoka County Surveyor  
 Minnesota License Number 46179

# HISTORY OF GOVERNMENT CORNER

County of Anoka

State of Minnesota

South 1/4 Corner of Sec. 35 Township 30 Range 24

## **CORNER HISTORY:**

***Date:***

August 24th, 1978 - Found a brass cap

January 2, 2020 - Found CIM broken off. Verified position of center fin using VRS GPS methods and updated ties

March 31, 2020 - Replaced broken CIM with cast iron monument

April 17, 2020 - Removed newly set CIM for road construction

August 20, 2020 - Reset cast iron monument, set flush to surface, after road construction completed

August 28, 2020 - Found CIM, verified position using VRS GPS methods and updated ties

September 19, 2022 - Found CIM flush, verified position using VRS GPS methods and updated ties