

CERTIFICATE OF LOCATION OF GOVERNMENT CORNER

County of Anoka

State of Minnesota

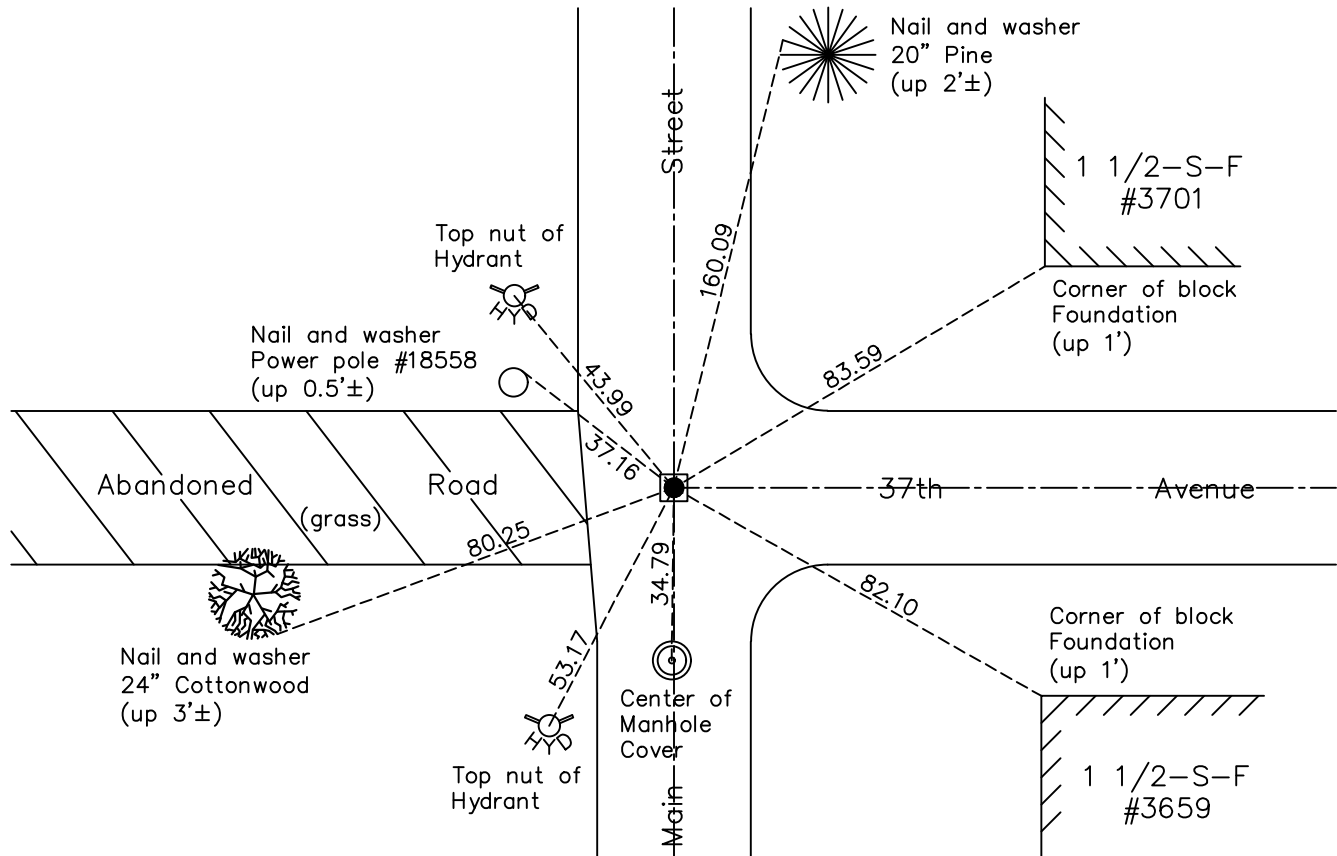
Southeast Corner of Sec. 34 Township 30 Range 24

On the 28th day of June, 1966, the described corner was evidenced by a concrete monument

and to perpetuate the location of said corner, at the exact location thereof, a permanent marker was placed consisting of the same concrete monument with a brass plug

AND on the 11th day of August, 2022, said permanent marker was found down 1'± in a covered tube and the ties were updated

Updated reference ties are as shown below.



Revision Date

12/27/22

N.A.D. 1983 Coordinates
(1996 Adjustment)

County Project Coordinates	
Northing	<u>100095.7738</u>
Easting	<u>499736.7231</u>
Date	<u>7/15/04</u>

I hereby certify that this United States public land survey monument record is correct and complete to the best of my knowledge and belief.

David Zieglmeier Date 12/11/23

David Zieglmeier Anoka County Surveyor
Minnesota License Number 46179

HISTORY OF GOVERNMENT CORNER

Page No. 80

County of Anoka

State of Minnesota

Southeast Corner of Sec. 34 Township 30 Range 24

CORNER HISTORY:

April 6, 1943 - Harvey Cartwright found a 10" diameter cast iron monument #1019 of the Minneapolis Control Survey down 0.5 feet. Updated the ties.

July 31, 1961 - Found monument missing. Set concrete spike using corner ties. Updated the ties.

July 30, 1964 - Found concrete spike and updated ties.

June 28, 1966 - Found concrete spike missing. Set P.K. spike and updated ties.

August 13, 1970 - Found P.K. spike and updated ties.

June 28, 1974 - Found brass plug in road with a concrete monument with brass plug down 2.5'± in metal casing. filed 'V' notches in metal casing for an intersection location. Updated ties.

August 8, 1977 - Found concrete monument with brass plug and updated ties.

May 12, 1978 - Found concrete monument with brass plug and updated ties.

July 21, 1980 - Found concrete monument with brass plug and updated ties.

June 24, 1986 - Found concrete monument with brass plug and updated ties.

August 1, 1989 - Found concrete monument with brass plug and updated ties.

July 25, 1994 - Found concrete monument with brass plug and updated ties.

July 15, 2004 - Established NAD 1983 (1996 adj.) Anoka County project coordinates by static GPS methods.

October 1, 2008 - Found concrete monument with brass plug and updated ties.

October 22, 2014 - Found concrete monument with brass plug down 1'± in covered tube. Verified position by VRS GPS methods. Updated ties.

December 23, 2019 - Found concrete monument with brass plug down 1'± in covered tube. Verified position by VRS GPS methods. Updated ties.

August 11, 2022 - Found concrete monument with brass plug down 1'± in covered tube. Verified position by VRS GPS methods. Updated ties.