

CERTIFICATE OF LOCATION OF GOVERNMENT CORNER

County of Anoka

State of Minnesota

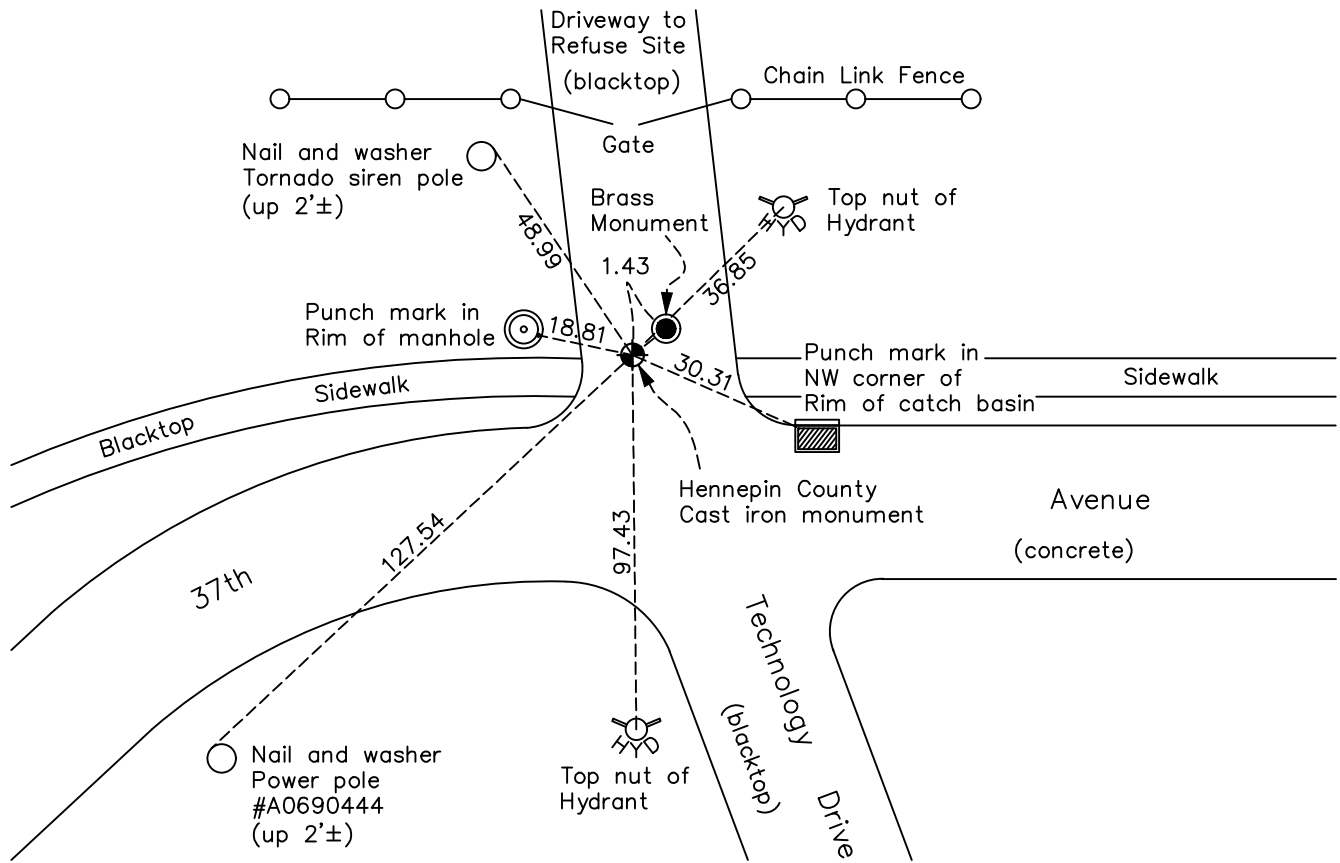
South 1/4 Corner of Sec. 34 Township 30 Range 24

On the 15th day of September, 1960, the described corner was evidenced by a brass monument in concrete

and to perpetuate the location of said corner, at the exact location thereof, a permanent marker was placed consisting of a Hennepin County cast iron monument

AND on the 8th day of August, 2022, said permanent marker was found flush with the surface and the ties were updated

Updated reference ties are as shown below.



(Hennepin County Cast Iron Monument)
 N.A.D. 1983 Coordinates
 (1996 Adjustment)

County Project Coordinates	
Northing	<u>100070.0723</u>
Easting	<u>497106.5480</u>
Date	<u>2/16/05</u>

I hereby certify that this United States public land survey monument record is correct and complete to the best of my knowledge and belief.

David Zieglmeier Date 12/11/23

David Zieglmeier Anoka County Surveyor
 Minnesota License Number 46179

Revision Date
12/27/22

HISTORY OF GOVERNMENT CORNER

Page No. 81

County of Anoka

State of Minnesota

South 1/4 Corner of Sec. 34 Township 30 Range 24

CORNER HISTORY:

April 6, 1943 - Harvey Cartwright found a 10" diameter cast iron monument #1001 of the Minneapolis Control Survey flush in cement. Updated the ties.

September 15, 1960 - Found cast iron monument flush and updated ties.

June 29, 1966 - Found a brass monument set in concrete down 1.5'± in a cast iron casing with cover. Filed 'V' notches in casing for intersection location. Updated ties.

August 13, 1970 - Found a brass monument set in concrete and updated ties.

June 19, 1974 - Found brass monument set in concrete and updated ties.

August 8, 1977 - Found brass monument set in concrete and updated ties.

July 17, 1980 - Found brass monument set in concrete and updated ties.

June 24, 1986 - Found brass monument set in concrete and updated ties.

August 2, 1989 - Found brass monument set in concrete and updated ties.

August 1, 1994 - Found brass monument set in concrete and updated ties.

February 16, 2005 - Established NAD 1983 (1996 adj.) Anoka County project coordinates by static GPS methods.

October 1, 2008 - Found brass monument set in concrete down in a covered tube and a Hennepin County cast iron monument flush, 1.43 feet to the Southwest. Updated ties to brass monument.

October 22, 2014 - Found brass monument set in concrete down 1'± in covered tube and a Hennepin County cast iron monument flush, 1.43 feet to the Southwest. Verified position of both monuments by VRS GPS methods. Updated ties to brass monument.

April 2, 2015 - Found brass monument set in concrete down in a covered tube and a Hennepin County cast iron monument flush, 1.43 feet to the Southwest. Updated ties to Hennepin County cast iron monument.

December 17, 2019 - Found a Hennepin County cast iron monument flush and a brass monument set in concrete down in a covered tube, 1.43 feet to the Northeast. Verified position by VRS GPS methods. Updated ties to Hennepin County cast iron monument.

August 8, 2022 - Found a Hennepin County cast iron monument flush and a brass monument set in concrete down in a covered tube, 1.43 feet to the Northeast. Verified position by VRS GPS methods. Updated ties to Hennepin County cast iron monument.